

htma

# EIA

ENVIRONMENTAL IMPACT ASSESSMENT

---

DEVELOPMENT OF GREEN  
TECHNOLOGY ZONE NEAR  
SUNDAR INDUSTRIAL ESTATE,  
LAHORE

## Document Control

Document:	ENVIRONMENTAL IMPACT ASSESSMENT
Project Name:	Development of Green Technology Zone near Sundar Industrial Estate, Lahore
Project Ref.:	HTMA-EIA-LHR-STZ-0325
Revision No.:	HTMA-EIA-LHR-STZ-0325

### Revision History:

Revisions	Date
HTMA-EIA-LHR-STZ-0325	

© ALL RIGHTS RESERVED - MARXH 2025

FOR HY CONSTRUCTION PVT. LTD | GREEN TECHNOLOGY ZONE

## Table of Contents

<b>List of Figures</b>	<b>x</b>
<b>List of Tables</b>	<b>xi</b>
<b>EXECUTIVE SUMMARY</b>	<b>1</b>
Title and Location of Project	1
Name of the Proponent/Developer	2
Name of Organization Preparing the Report	2
Purpose of Report	4
Environmental Legislative, Regulatory and Institutional Framework	4
Pakistan Environmental Protection Agency (Pak-EPA)	5
Provincial Environmental Setup in Punjab	5
International Environmental Requirements	5
Environmental Requirements of IFC	5
ADB Environmental Assessment Guidelines	5
Environmental and Social Safeguard of the World Bank	5
Alternative Considerations	6
Need of Environmental Assessment	6
General Topography of the Area	6
Major Impacts	6
Recommendations for Mitigation Measures	7
Proposed Monitoring	7
Conclusions and Recommendations	8
Environmental and Social Impact and Mitigation Measures	8
<b>1. INTRODUCTION</b>	<b>14</b>
1.1 Purpose of the Report	14

1.2	Need of Environmental Assessment	15
1.3	Details of the Proponent	15
1.4	Details of Consultant	15
1.5	Brief Description of the Project	16
1.6	Types of Industries High Potential Sector for following industries in Lahore STZ	19
1.7	Alternative Considerations	19
<b>2.</b>	<b>ENVIRONMENTAL LEGISLATIVE, REGULATORY AND INSTITUTIONAL FRAMEWORK</b>	<b>20</b>
2.1.	National Requirements	20
2.1.1.	Background	20
2.1.2.	Pakistan Environmental Protection Act (PEPA), 1997	21
2.1.3.	Pak-EPA, Policy and Procedures for Filing, Review and Approval of Environmental Assessment	22
2.1.4.	Pak-EPA, Guidelines for Preparation and Review of Environmental Reports	22
2.1.5.	Pak-EPA, Guidelines for Public Consultation during IEE / EIA	23
2.1.6.	National Environmental Quality Standards	24
2.1.7.	National Environmental Institutions in Pakistan	24
2.1.8.	Federal Ministry of Climate Change	24
2.1.9.	Pakistan Environmental Protection Council (PEPC)	24
2.1.10.	Pakistan Environmental Protection Agency (Pak-EPA)	25
2.1.11.	18th Amendment to the Constitution of the Islamic Republic of Pakistan	26
2.1.12.	Status of PEPA after 18th Amendment	26
2.1.13.	Status of Pak-EPA Rules and Regulations after 18th Amendment	26
2.1.14.	Pak-EPA, Review of IEE and EIA Regulations, 2022	26
2.1.15.	Environmental Quality Standards	26

2.1.16.	Provincial Environmental Setup in Punjab	27
2.1.17.	Other National and Provincial Legislation Applicable to the Proposed Project	27
2.1.18.	Land Acquisition Act, 1894	27
2.1.19.	Canal and Drainage Act 1873	28
2.1.20.	Punjab Wildlife Act, 1974	28
2.1.21.	Punjab Forest Act 2010	28
2.1.22.	Antiquities Act, 1975	29
2.1.23.	Punjab Factories Act 1934 (Amended 1940)	29
2.1.24.	Explosives Act 1884	29
2.1.25.	Employment of Child Act 1991	29
2.1.26.	Pakistan Penal Code 1860	30
2.1.27.	Punjab Power Policy 2009	30
2.2.	International Environmental Requirements	30
2.2.1.	Environmental and Social Requirements of the World Bank	30
2.2.2.	Environmental and Social Requirements of IFC	31
2.2.3.	IFC Sustainability Framework	31
2.2.4.	IFC Performance Standards on Environmental and Social Sustainability	31
2.2.5.	IFC Environment, Health and Safety (EHS) Guidelines	32
2.2.6.	IFC Environmental and Social Review Procedures	32
2.2.7.	Environmental and Social Requirements of ADB	32
3.	<b>CONSIDERATION OF ALTERNATIVES</b>	34
3.1.	No Project Option	34
3.2.	Site alternatives, their Selection and Rejection Criteria	35
3.3.	Environmental Alternatives, their Selection and Rejection Criteria	35

3.4.	Economic Alternatives, their Selection and Rejection Criteria	36
3.5.	Analysis of Alternatives	36
3.6.	Alternative Sites	37
<b>4.</b>	<b>DESCRIPTION OF THE PROJECT</b>	<b>38</b>
4.1.	Objectives of the Project	38
4.2.	Nature, Location and Site Layout of the Project	38
4.3.	Master Plan for The Project	39
4.4.	Land Use on the Site	40
4.5.	Road Access	40
4.6.	Cost and the Magnitude of Operation	40
4.7.	Schedule of Implementation	40
4.7.1	Planning	40
4.7.2	Design	41
4.8.	Types of Industries	41
4.9.1	Services	41
4.9.2	Connectivity	42
4.9.	Commercial Buildings	42
4.10.	Waste Water Treatment Plant and Solid Waste Management System	42
4.11.	Fire Fighting System	43
<b>5.</b>	<b>DESCRIPTION OF THE ENVIRONMENT</b>	<b>44</b>
5.1.	General	44
5.2.	Physical Environment	44
5.2.1.	Physical Features around the Project Area	44
5.2.2.	Geography	44
5.2.3.	Seismic Zone	45

5.2.4. Climate	46
5.2.5. Temperature	46
5.2.6. Water Resources	48
5.3. Ecological Environment	49
5.3.1. Flora	49
5.3.2. Fauna	49
5.3.3. Endangered Species	50
5.4. Socioeconomic Environment	50
5.5. Quality of Life Values	51
5.5.1. Religious, Ethnic Groups and Languages	51
5.5.2. Social Infrastructure and Facilities	51
5.5.3. Educational Institutions	51
5.5.4. Health Facilities	52
5.5.6. Economy of the Area	52
5.5.7. Agriculture	53
5.5.8. Livestock	54
5.5.9. Archeological and Cultural Sites	54
5.6. Environmental Baseline Monitoring	55
5.7. Suitability of the Site	55
<b>6. ENVIRONMENTAL IMPACTS ASSESSMENT</b>	<b>56</b>
6.1. What is the Problem?	56
6.2. When Problem Will Occur and When It Should Be Addressed?	56
6.3. Where Problem should be addressed?	56
6.4. How the Problem should be addressed?	56
6.5. Ways of Achieving Mitigation Measures	56

6.5.1. Changing in Planning and Design	56
6.5.2. Improved Monitoring and Management Practices	57
6.5.3. Compensation in Money Terms	57
6.6. Impacts on Physical Environment	57
6.6.1. Impacts on Land Resources	57
6.6.2. Land Productivity and Use	57
6.6.3. Soil Erosion and Land Sliding	58
6.6.4. Soil Contamination	58
6.6.5. Mitigation Measures	58
6.6.6. Land Productivity and Use	59
6.6.7. Soil Erosion and Land Sliding	60
6.7. Impacts on Biological Environment	60
6.7.1. Impacts on Flora	60
6.7.2. Trees to be planted	60
6.7.3. Impacts on Fauna	61
6.7.4. Mammals and Reptiles	61
6.7.5. Birds	61
6.7.6. Mitigation Measures	61
6.7.7. Mammals and Reptiles	62
6.7.8. Impacts on socioeconomic and cultural Environment	62
6.7.9. Impacts on Local Communities/ Workforce	63
6.7.10. Generation of income	63
6.7.11. Gender issues	63
6.7.12. Indigenous, Vulnerable and Women Headed Households	63
6.7.13. Mitigation Measures	63

6.8.	Methodology for Impacts Identification	64
6.9.	Impacts Analysis and Prediction	65
6.10.	Characterization of Impacts	65
6.11.	Impact's Significance	66
<b>7.</b>	<b>SCREENING OF POTENTIAL ENVIRONMENTAL IMPACTS &amp; MITIGATION MEASURES</b>	<b>67</b>
7.1.	Project location	67
7.2.	Mitigation Measures	67
7.3.	Anticipated Environmental Impacts Related to Project Design	67
7.4.	Environmental Impacts during Installation Stage	67
<b>8.</b>	<b>ENVIRONMENTAL MANAGEMENT &amp; MONITORING PLAN</b>	<b>75</b>
8.1.	Introduction	75
8.2.	Objectives	75
8.3.	Implementation of EMMP	75
8.4.	Management Approach and Responsibilities	76
8.4.1.	Primary Responsibilities:	76
8.4.2.	Project Management and Quality Control:	76
8.5.	Mitigation Plan	77
8.6.	Waste Management	82
8.7.	Monitoring Plan	83
8.7.1.	Objective of Monitoring	83
8.7.2.	Performance Indicators	84
8.8.	Environmental Records	84
8.9.	Environmental Training	85
8.10.	Construction and Operation Management Plan	86

8.11.	Environment Management Team	92
<b>9.</b>	<b>INVOLVEMENT OF STAKEHOLDER'S / PUBLIC CONSULTATION</b>	<b>93</b>
9.1.	Introduction	93
9.2.	Principles of stakeholders Consultation	93
9.3.	Benefits and Objectives of Stakeholder's Consultation	93
9.4.	Identification and Classification of Stakeholders	94
9.5.	Methodology for Consultation	94
9.6.	Key Consulted Stakeholders	95
9.6.1.	Responsible Authority	95
9.6.2.	Other departments and agencies	95
9.6.3.	Environmental Practitioners and Experts Team	95
9.6.4.	Affected & Wider Community	95
9.6.5.	Summary of Concerns of Consulted Stakeholders	95
<b>10.</b>	<b>CONCLUSIONS AND RECOMMENDATIONS</b>	<b>97</b>
	<b>APPENDICES</b>	<b>98</b>
	<b>Appendices-I: Glossary</b>	<b>99</b>
	<b>Appendices-II: List of Abbreviations</b>	<b>101</b>
	<b>Appendices-III: Environmental Map</b>	<b>102</b>
	<b>Appendices-IV: References</b>	<b>103</b>
	<b>Appendices-V: Terms of Reference of Environmental Reports</b>	<b>105</b>
	<b>Appendices-VI: Consultant Team</b>	<b>107</b>
	<b>Appendices-VII: Lab Reports</b>	<b>109</b>
	<b>Appendices-VIII: Plantation Estimates</b>	<b>113</b>
	<b>Appendices-IX: Master Plant of the Project</b>	<b>114</b>

## List of Figures

Figure 1-1 Layout of the Project.....	18
Figure 2-1: Electricity Consumers in Pakistan.....	23
Figure 4-1 Location of the Project .....	39
Figure 4-2 Master of the Proposed STZ .....	39
Figure 5-1 Location of District Lahore .....	45
Figure 5-2 Seismic Zoning Map of Pakistan .....	45
Figure 5-3 Graphical Representation of Climate .....	46
Figure 5-4 Temperature Variations during Different Months .....	47
Figure 5-5 Temperature and Rainfall Data (Data Source: Metoblue) .....	47
Figure 5-6 Graphical Representation of Groundwater Level Trends .....	48
Figure 5-7 Pictorial View of Economy of Lahore .....	53

## List of Tables

Table 1-1 Details of the Proponent .....	15
Table 4-1 Cost of the Project.....	40
Table 4-2 Time Schedule for the Project Development.....	41
Table 4-3 List of Areas Nearby the Project .....	42
Table 5-1 Summary of Socio-Economic Indicators .....	50
Table 5-2 Health Facilities in Lahore.....	52
Table 6-1 Characterization of Impacts .....	65
Table 6-2 Significance of Environmental Impacts.....	66
Table 7-1 Identification of Impacts during Installation Stage of the Project .....	68
Table 7-2 Environmental and Social Impacts of the Proposed Project.....	70
Table 8-1 Roles and Responsibilities for Environmental Monitoring .....	76
Table 8-2 Mitigation Plan for Design & Construction Phase.....	77
Table 8-3 Mitigation Plan for Operation Phase .....	80
Table 8-4 Waste Management Plan Summary .....	82
Table 8-5 Framework for the Environmental and Social Training Program .....	85
Table 8-6 Impacts and Mitigation Measures during Construction & Operation Phase ....	87
Table 8-7 List of Individuals and their Responsibilities .....	92

## **EXECUTIVE SUMMARY**

### **Title and Location of Project**

HY Construction Pvt. Ltd intends to develop an Technological estate titled as "Green Technology Zone, Lahore" over an area of 8.826 acres, where issues of Technologicalists are handled and problems solved through 'One Window' operation. We expect to introduce a mix of Technological companies in Green Technology Zone. It is estimated that this sector will create up to 1000 jobs for the local population, earn foreign exchange through exports and save foreign exchange through import substitution.

In 2010, through the 18th Amendment to the Constitution of the Islamic Republic of Pakistan, 1973, environment became a provincial subject, empowering each province to make its own law. In 2017, Punjab adopted the Federal Act with minor amendments, calling it The Punjab Environmental Protection Act, 1997 (the "Punjab Act"). Section 12 of the Federal and Punjab Acts requires the filing of an EIA for projects that are likely to cause adverse environmental effects.

This EIA of the proposed project has been conducted in accordance with national and provincial environmental regulations and guidelines. In addition, other relevant international environmental laws and regulations have also been considered. At the current time, only the national and provincial environmental regulations are applicable to proposed Project. However, other relevant international environmental laws and regulations have been considered as they may be required in the event that the proposed Project goes for lending from any international agency.

This EIA report provides an assessment of anticipated positive and negative environmental and social impacts of the proposed Project, along with the appropriate measures to further enhance the beneficial impacts and to mitigate any adverse impacts.

The Green Technology Zone is located in District Lahore. The google earth map showing the location of the zone is shown in Figure below and attached as *Annexure III* on A3 size.



The proposed site is located on main Mull-Talib Sarai road, at a distance of 1.8 Kilometres from the Sundar Industrial Estate Gate and on one side touches the back wall of the said Estate. The closest bigger town is Raiwind which is near to the gate 8 of proposed STZ.. It is well linked with the main roads as well. Distance from the proposed STZ to Multan Road (Sundar) is around 7 Km.

The proposed STZ is spread over an area of 8.826 and is planned integrate the advantages and featured resources for small & medium enterprises of Lahore and nearby.

### Name of the Proponent/Developer

This STZ is being proposed by the HY Construction Pvt. Ltd. The details are given below;

<b>Proponent Name</b>	Hamad Zahid (Director)
<b>Contact</b>	03324595341
<b>Email</b>	<a href="mailto:hyconstructionpvtltd@gmail.com">hyconstructionpvtltd@gmail.com</a>

### Name of Organization Preparing the Report

HTMA (Pvt.) Ltd. is a business entity manned by geoscientist, environmentalist, Technological & mineral clustering experts, surveyors and IT experts. The company has a wide range of experience in mining, regulatory regime, drafting of technical agreements, service agreements, management of mining, teaching & training, planning and development, IEE and EIA reports, preparation of feasibility reports and their implementation.

The Consultants preparing this report are specialists in the fields of geology, geological mapping, exploration, Mineral Resource estimation and classification, open pit mining,

geotechnical and environmental field. Some of the listed areas highlight the chapters of services:

- Economic Geology
- Determination of geological exploratory techniques
- Mine design
- Selection of mine machinery and equipment
- Mine Development
- Mine Management
- Rescue and Recovery services
- Mine surveying & interpretation of boundary disputes
- Minerals processing
- Preparation of feasibility reports
- SWOT Analysis
- Establishment of Mining Villages and Mineral Cities
- Environmental Impact Assessment and Rehabilitation Studies
- Human resource development
- Legal opinion on mine regulatory regime
- Energy fuels and their selection on techno economic parameters
- Special focus on coal and rock salt mining
- Drilling and blasting for underground and surface mining techniques
- Safety measures for mines operation
- Consultancy relating to manufacturing, marketing & service areas

The contact information of the consultant is presented in Table.

Company	HTMA (Pvt.) Ltd.
Address	81-A Bridge Colony, Lahore Cantt
Representative	Engr. Harris Naeem
Designation	Director Operations
Contact	0304 0444440
e-Mail	<a href="mailto:harris.naeem@hitechma.com">harris.naeem@hitechma.com</a>
Website	<a href="http://www.hitechma.com">www.hitechma.com</a>

## Purpose of Report

The purpose of the EIA study is to identify the possible beneficial and adverse environmental impacts of the project as presently envisaged and propose the applicable mitigation measures to be implemented during the construction and operational stages of the project in order to minimize the negative impacts and preparation of Environmental Management Plan (EMP) to obtain No Objection Certificate (NOC) from Punjab-EPA.

This EIA report has been prepared keeping in view the following regulations and guidelines:

- Pakistan Environmental Protection Act (PEPA), 1997 & Punjab Environmental Protection Act (PEPA), 2017.
- Pakistan Environmental Protection Agency Regulations, 2022 for review of IEE and EIA.
- Pakistan Environmental Impact Assessment procedures, 2022.
- Guidelines for Preparation and Review of Environmental Reports

## Environmental Legislative, Regulatory and Institutional Framework

National environmental laws, regulations, guidelines and policies applicable to proposed project have been provided below:

- Pakistan Environmental Protection Act 1997 is the supreme environmental legislation in Pakistan.
- "Pak-EPA Review of IEE and EIA Regulations, 2022" make the provisions for the preparation, submission, review and approval of the Initial Environmental Examination (IEE) and the Environmental Impact Assessment (EIA) reports and post monitoring of environmental approvals by Pak-EPA. Regulations, 2022 also provide the classification of projects requiring IEE and EIA. According to the classification provided by the Regulations, 2022, the proposed project having significant environmental and social impacts, requires an Environmental Impact Assessment (EIA) to be conducted.
- Pak-EPA Policy and Procedures for Filing, Review and Approval of Environmental Assessment establish a policy context and administrative procedures for environmental assessment in Pakistan.
- Pak-EPA Guidelines for "Preparation and Review of Environmental Reports" is confined to general aspects of the environmental reports.
- Pak-EPA Guidelines for Public Consultation during IEE/EIA.
- Pak-EPA Sectoral Guidelines for Major Thermal Power Stations.

- National Environmental Institutions in Pakistan.

#### **Pakistan Environmental Protection Agency (Pak-EPA)**

Key functions of Pak-EPA are: Implementation of PEPA, 1997 i.e., to develop regulations and guidelines as referred by the Act. Review and approval of IEE and EIA reports submitted to them. In addition, Pak-EPA is mandated to prepare or revise, and establish the National Environmental Quality Standards (NEQS) with approval of Pakistan

#### **Provincial Environmental Setup in Punjab**

Punjab EPA enacted the Provincial Environmental Protection Act in November, 2017 by making appropriate amendments in PEPA, 1997. The EPA; Punjab now undertakes functions as delegated under the Punjab Environmental Protection Act, 1997.

EIA related functions are performed through Environmental Approval Section of the Punjab EPA. Environmental Protection Council (PEPC).

#### **International Environmental Requirements**

Provided below is a listing of international environmental and social requirements relevant to the proposed project.

#### **Environmental Requirements of IFC**

- IFC Sustainability Framework.
- IFC Performance Standards on Environmental and Social Sustainability.
- IFC Environment, Health and Safety (EHS) Guidelines.
- IFC's "Environmental and Social Review Procedures.

#### **ADB Environmental Assessment Guidelines**

ADB Environmental Assessment Guidelines describe how to fulfill the requirements outlined in ADB's Environment Policy and Operations Manual on Environmental Considerations in ADB Operations. Information on ADB's policies and procedures for conducting and reporting on the environmental assessment is also provided for all types of projects.

#### **Environmental and Social Safeguard of the World Bank**

The World Bank's environmental assessment policy and recommended processing are described in Operational Policy (OP)/Bank Procedure (BP) Environmental Assessment. This policy is considered to be the umbrella policy for the Bank's environmental 'safeguard policies.

### **Alternative Considerations**

Alternatives are generally identified and analyzed to determine the most viable method of achieving the project objectives. During the recent years, environmental and social concerns related to the developmental activities, are gaining significant momentum all over the world. Therefore, besides the technical and financial considerations, it is also required to recognize the environmental and social consequences of developmental projects,

Alternatives considered in this EIA include following:

- No project option;
- Alternate technologies for Economical Zone;
- Site Alternatives, their Selection and Rejection Criteria
- Design/technology alternatives, their selection and rejection criteria
- Environmental Alternatives, their selection and rejection criteria
- Economic Alternatives, their selection and rejection criteria

### **Need of Environmental Assessment**

The preparation and submission of an Environmental Impact Assessment (EIA) report for any development project is a statutory obligation under Punjab Environmental Protection Act 1997, (amended 2017) in terms of Section 12 of the Act which states as under:

*"No proponent of a project shall commence construction or operation unless he has filed with the Provincial Agency, an initial environmental examination or where the project is likely to cause an adverse environmental effect, an environmental impact assessment, and has obtained from the Provincial Agency approval in respect thereof."*

*The current Project falls under Schedule- II of subsection H under list 5 Technological Estate (Including Export Processing Zones) of IEE/EIA Regulation 2022 and thus requires Environmental Impact Assessment- EIA.*

### **General Topography of the Area**

General Topography of the area is almost flat with no noticeable variation in the surface elevation. Approximately the area will be under Technological plots and remaining area will be dedicated for roads, infrastructure, amenities, utilities, commercial area, etc. Overall distribution/utilization is based on international standards and need assessment surveys.

### **Major Impacts**

The development of the proposed project will have both positive and negative impacts during construction and operational phases; appropriate mitigation measures are proposed for negative impacts. Following are the major concerns and potential impacts

- Ambient air quality can get deteriorated both during pre-construction (site clearing) and construction phases of the proposed Technological state. The major contributing factors will be generation, suspension and deposition of particulate matter and gaseous emission due to vehicular movement.
- Noise levels can rise around the project site due to operation of machinery and equipment and transportation of construction materials etc.
- Construction waste, if not managed properly, can have negative impacts on the site and surrounding area
- Poor maintenance of vehicles, machinery and generator can cause increased noise levels as well as gaseous emissions
- Wastewater, if disposed of without any prior treatment, can cause surface and groundwater contamination.
- Oil spillages from construction machinery can result into soil and water contamination
- There will always be the possibility regarding hazard to health and safety of workers to occur during construction and operational phases of the proposed project
- Local residents will be preferred for employment in the proposed Technological state and thus it will have a positive impact on the local economy and regional

### **Recommendations for Mitigation Measures**

All the potential impacts of the proposed project should be prevented through appropriate measures and if happen, they should be properly mitigated. Appropriate mitigation measures have been suggested after this EIA study and a comprehensive Environmental Management and Monitoring Plan (EMMP) has been formulated and given in this EIA study. The execution of EMP will help to reduce the adverse impacts of the proposed project. Thus, the project should be made environment friendly by implementing this Environmental Management & Monitoring Plan (EMMP) with fidelity.

### **Proposed Monitoring**

The environmental performance of the proposed project should be overseen through proper monitoring during its construction and operational phases. The Environmental Monitoring Plan should be enforced during the project lifecycle to ensure effective surveillance of the environmental parameters at various stages of the project development and compliances with NEQS and legal obligations. Following parameters should be monitored;

- Ambient air quality should be monitored as per EPA NEQS Rules 2001
- Monitoring for noise level should be conducted as per EPA NEQS Rules 2001
- Monitoring for waste water & drinking water quality should be conducted as per EPA NEQS Rules 2001

The proponent shall be responsible for environmental monitoring and reporting throughout project life and assure proper implementation of mitigation measures, where needed, through adequate monitoring.

### **Conclusions and Recommendations**

The development of the proposed Green Technology Zone (GTZ) in the region will significantly contribute to the national economy. The establishment of the Green Technology Zone (GTZ) will not only accelerate Technologicalization but also create employment opportunities, foster innovation, promote technical education, and enhance the efficient utilization of local resources. Such advancements make the development of Green Technology Zone (GTZ) immensely valuable for both the local community and the broader economic landscape.

However, alongside these benefits, the proposed STZ project may also pose certain environmental challenges across all phases of its development. Most of the potential environmental impacts during the construction phase are expected to be temporary and manageable. These impacts can be effectively mitigated by implementing appropriate environmental safeguards and remedial measures, as outlined in this Environmental Impact Assessment (EIA) Report. Following are the recommendations based upon this EIA Study:

- Proposed mitigation measures for potential environmental impacts should be implemented to avoid/ minimize those impacts
- Tree plantation plan should be followed
- Proper implementation of EMMP should be ensured during all three phases of the proposed project.
- Training programs should be arranged and all working personnel and contractors should be given appropriate training prior to construction to ensure they are aware of the onsite responsibilities in respect of all environmental and social issues.
- EMMP should be made a part of contract document of Contractor and executed properly.

### **Environmental and Social Impact and Mitigation Measures**

Potential impacts described in this EIA are primarily caused by changes to the existing socioeconomic and bio physical environment brought on by the proposed project and thus should be interpreted in conjunction with the sections of the report addressing these biophysical and socio-economic dimensions.

**Table: Environmental and Social Impacts of the Proposed Project**

Subject Area	Potential Impacts During Construction	Potential Impacts During Operation	Mitigation
Physical Environment	<ul style="list-style-type: none"> <li>Dust from construction activities.</li> <li>Traffic-related air quality impacts.</li> </ul>	<ul style="list-style-type: none"> <li>Effects of stacks emissions on ambient air quality.</li> <li>Traffic-related air quality impacts.</li> <li>Green House Gas emissions</li> </ul>	<ul style="list-style-type: none"> <li>Watering of the material stockpiles, access roads and bare soils on an as required basis to minimize dust.</li> <li>Increase the watering frequency during periods of high risk (e.g. high winds).</li> <li>Stored materials such as gravel and sand should be covered and confined</li> <li>Vehicles with appropriate exhaust systems will be used.</li> <li>Maintenance of all vehicles on regular basis.</li> <li>Establish and implement vehicle speed limits to minimize dust generation</li> <li>Cover haul vehicles transporting dusty materials (cement, borrow) moving outside the construction site</li> <li>Use of specified haulage routes and reduce vehicle speed where required.</li> </ul>
Water Resources	<ul style="list-style-type: none"> <li>Control and management of site drainage.</li> <li>Wastewater discharge, Sewage disposal and foul drainage</li> </ul>	<ul style="list-style-type: none"> <li>Water requirements for operation</li> <li>Discharge of process and wastewater.</li> </ul>	<ul style="list-style-type: none"> <li>Stockpiles of potential water pollutants (i.e. oils, construction materials, fuel, etc.) shall be placed so as to minimize the potential of contaminants to enter local watercourses or storm-water drainage.</li> </ul>

		<ul style="list-style-type: none"> <li>• Effects on groundwater quality.</li> </ul>	<ul style="list-style-type: none"> <li>• Operation of drainage systems on site.</li> <li>• Discharge of storm water, sewage and drainage</li> </ul>	<ul style="list-style-type: none"> <li>• Preparation of Emergency Spills Contingency Plan.</li> <li>• Storm-water runoff from all fuel and oil storage areas, workshop, and vehicle parking areas is to be directed into an oil and water separator before being discharged to any watercourse</li> </ul>
<p><b>Soils, Geology and Topography</b></p>	<ul style="list-style-type: none"> <li>• Effects on soils and topographic features.</li> <li>• Soil contamination</li> </ul>	<ul style="list-style-type: none"> <li>• Soil contamination during the project activities.</li> </ul>	<ul style="list-style-type: none"> <li>• Impacts on existing land use on site.</li> <li>• Impacts on existing land use in the surrounding area.</li> <li>• Effects on landscape character.</li> <li>• Visual impact of operating facilities.</li> </ul>	<ul style="list-style-type: none"> <li>• Ensure the topography of the final surface of all raised lands are favorable to enhance natural draining of rainwater / flood water</li> <li>• Restore the natural landscape of the construction sites after completion of work</li> <li>• Stop work and inform the site manager immediately if, during construction, an archaeological or burial site is discovered.</li> <li>• It is an offence to restart work in the vicinity of the site until approval to continue is awarded by the plant management.</li> <li>• Resolve landscape change issue in consultation with local leaders and supervision consultants.</li> </ul>
<p><b>Land Use, Landscape and Visual Issues</b></p>	<ul style="list-style-type: none"> <li>• Impacts on existing land use on site.</li> <li>• Impacts on existing land use in the surrounding area.</li> <li>• Effects of construction activities on landscape character.</li> <li>• Visual impact of construction activities.</li> </ul>			

<b>Ecological Environment</b>	<b>Flora</b>	<ul style="list-style-type: none"> <li>Loss of natural vegetation and crops</li> </ul>	<ul style="list-style-type: none"> <li>Impacts on flora due to altered drainage and runoff patterns</li> </ul>	<ul style="list-style-type: none"> <li>Removal of trees should be limited to the development footprint</li> <li>Construction activities shall reduce the loss or disturbance of vegetation</li> <li>Use clear areas to avoid cutting of trees</li> <li>A procedure shall be prepared to manage vegetation removal, clearance and reuse</li> <li>Inform the plant management before clearing trees</li> </ul>
	<b>Fauna</b>	<ul style="list-style-type: none"> <li>Losses of habitat or species due to land lake.</li> <li>Disturbance or damage to adjacent habitat of species</li> </ul>	<ul style="list-style-type: none"> <li>Disturbance or damage to adjacent habitat</li> <li>Effects on birds migration routes</li> </ul>	<ul style="list-style-type: none"> <li>Project should ensure the safety of various animals in construction and operation camp area.</li> </ul>
	<b>Economy Related Impacts</b>	<ul style="list-style-type: none"> <li>Impacts on local skilled and un-skilled labor and businesses.</li> </ul>	<ul style="list-style-type: none"> <li>Impacts on local labor and businesses</li> </ul>	<ul style="list-style-type: none"> <li>The increased government revenue could be used to meet objective by improving infrastructure and services in areas local to the project.</li> </ul>
<b>Social Settings and Services</b>	<ul style="list-style-type: none"> <li>Demographic changes due to influx of people.</li> <li>Pressure on existing infrastructure, utilities and services.</li> </ul>	<ul style="list-style-type: none"> <li>Small scale demographic and cultural changes.</li> </ul>	<ul style="list-style-type: none"> <li>Safe, reliable water supply, Sufficient housing for all.</li> <li>Treatment facilities for sewerage of toilet and domestic wastes</li> <li>In-house-community entertainment facilities.</li> </ul>	

<p><b>Related Impacts</b></p>			
<p><b>Public Health Related Impacts</b></p>	<ul style="list-style-type: none"> <li>• Traffic congestions and disruption to road users</li> <li>• Health impacts due to construction related dust and</li> <li>• air emissions and wastewater/effluents release</li> <li>• Traffic-related air quality.</li> <li>• Traffic-related noise</li> </ul>	<ul style="list-style-type: none"> <li>• Health impacts due to air emissions and noise and effluents released.</li> <li>• Traffic-related air quality impacts.</li> <li>• Traffic-related noise impacts.</li> </ul>	<ul style="list-style-type: none"> <li>• Implement proper safety standards.</li> <li>• Provide personal protection equipment (PPE) for staff, such as safety shoes, helmets, masks, gloves, protective clothing, goggles, full—face eye shields, and ear protection.</li> <li>• Maintain the PPE under a regular checking and replacement program.</li> <li>• Provide safe and healthy work environment to workers, taking into account inherent risks in its particular construction activity and specific classes of hazards in the work areas.</li> </ul>
<p><b>Occupational Health safety</b></p>	<ul style="list-style-type: none"> <li>• Accidents.</li> <li>• Effects on health of workforce</li> <li>• Safety at work.</li> </ul>	<ul style="list-style-type: none"> <li>• Accidents.</li> <li>• Effects on health of workforce.</li> <li>• Safety at work.</li> </ul>	<ul style="list-style-type: none"> <li>• A traffic management plan will be developed by the construction contractor to prevent incidents of accidents which may occur due to transportation of machinery and equipment to the project site.</li> <li>• Undertake a full project community risk assessment followed by the development of a community emergency preparedness and response plan appropriate to its findings.</li> </ul>

	<p><b>National and Regional Impacts</b></p>	<ul style="list-style-type: none"> <li>• Human resources development.</li> <li>• Economic development at regional and national level</li> </ul>	<ul style="list-style-type: none"> <li>• Technological development in Punjab and Pakistan</li> <li>• National and regional (Punjab) power cities</li> <li>• Impacts on regional and national air quality</li> </ul>	<ul style="list-style-type: none"> <li>• The increased government revenue could be used to meet development objective by improving infrastructure and services in areas local to the project</li> </ul>
	<p><b>Global Impacts</b></p>	<ul style="list-style-type: none"> <li>• Purchase of equipment and machinery from global markets</li> <li>• Hiring the international contractors and consultants</li> </ul>	<ul style="list-style-type: none"> <li>• Green-house gas emission and climate change</li> <li>• Impacts on global air quality and global warming</li> </ul>	<ul style="list-style-type: none"> <li>• Maintenance of all construction machinery on regular basis</li> <li>• Use of machinery with appropriate exhaust system</li> <li>• In order to control the particle emission all stages filtering system, duct collectors or humidification or other techniques(as applicable) to the concrete batching and mixing plant will be provided.</li> </ul>

## 1. INTRODUCTION

### 1.1 Purpose of the Report

This EIA of the proposed project has been conducted in accordance with national and provincial environmental regulations and guidelines. In addition, other relevant international environmental laws and regulations have also been considered. At the current time, only the national and provincial environmental regulations are applicable to proposed Project. However, other relevant international environmental laws and regulations have been considered as they may be required in the event that the proposed Project goes for lending from any international agency identification of the Project and Proponent.

Recognizing these imperatives, the Government of Pakistan has introduced strategic initiatives to promote the establishment of Special Technology Zones (STZs)—technology-focused Technological parks designed to attract and facilitate high-tech industries. These zones are being incentivized through comprehensive policies, including the provision of Special Economic Zone (SEZ) status upon meeting specified criteria. Developers and enterprises operating within SEZs are offered various incentives to stimulate Technologicalization and technological advancement in the country.

To reinforce this initiative, the Government has enacted the Special Economic Zones Act, 2013, ensuring the structured creation, development, and operation of SEZs and STZs. This framework aims to attract both domestic and international investors, enhance Technological infrastructure, and support sustainable economic development. The SEZs are expected to form vibrant technology clusters, create approximately 1,000 new job opportunities for the local population, promote exports of tech-related goods and services, and reduce reliance on imported technology by fostering indigenous innovation.

This Environmental Impact Assessment (EIA) Report provides a detailed evaluation of the expected positive and negative environmental and social impacts associated with the proposed SEZ project. The report outlines practical and effective measures to enhance the beneficial outcomes and mitigate any adverse effects, ensuring environmentally responsible development.

The purpose of the EIA study is to identify the possible beneficial and adverse environmental impacts of the project as presently envisaged and propose the applicable mitigation measures to be implemented during the construction and operational stages of the project in order to minimize the negative impacts and preparation of Environmental Management Plan (EMP) to obtain No Objection Certificate (NOC) from Punjab-EPA.

This EIA report has been prepared keeping in view the following regulations and guidelines:

1. Pakistan Environmental Protection Act (PEPA), 1997 & Punjab Environmental Protection Act (PEPA), 2017.
2. Pakistan Environmental Protection Agency Regulations, 2022 for review of IEE and EIA.
3. Pakistan Environmental Impact Assessment procedures, 2022.
4. Guidelines for Preparation and Review of Environmental Reports

## 1.2 Need of Environmental Assessment

The preparation and submission of an Environmental Impact Assessment (EIA) report for any development project is a statutory obligation under Punjab Environmental Protection Act, 2017 (PEPA, 2017) in terms of Section 12 of the Act which states as under:

*"No proponent of a project shall commence construction or operation unless he has filed with the Provincial Agency, an initial environmental examination or where the project is likely to cause an adverse environmental effect, an environmental impact assessment, and has obtained from the Provincial Agency approval in respect thereof."*

The current Project falls under Schedule- II of subsection H under list 5 Technological Estate (including Export Processing Zones) of IEE/EIA Regulation 2022 and thus requires Environmental Impact Assessment- EIA

## 1.3 Details of the Proponent

This STZ is being proposed by the HY Construction Pvt. Ltd. The details are given below;

Table 1-1 Details of the Proponent

Proponent Name	Hamad Zahid
Contact	03324595341
Email	hyconstructionpvtltd@gmail.com

## 1.4 Details of Consultant

HTMA (Pvt.) Ltd. is a business entity manned by geoscientist, environmentalist, Technological & mineral clustering experts, surveyors and IT experts. The company has a wide range of experience in mining, regulatory regime, drafting of technical agreements, service agreements, management of mining, teaching & training, planning and development, IEE and EIA reports, preparation of feasibility reports and their implementation.

The Consultants preparing this report are specialists in the fields of geology, geological mapping, exploration, Mineral Resource estimation and classification, open pit mining, geotechnical and environmental field. Some of the listed areas highlight the chapters of services:

- Economic Geology
- Determination of geological exploratory techniques

- Mine design
- Selection of mine machinery and equipment
- Mine Development
- Mine Management
- Rescue and Recovery services
- Mine surveying & interpretation of boundary disputes
- Minerals processing
- Preparation of feasibility reports
- SWOT Analysis
- Establishment of Mining Villages and Mineral Cities
- Environmental Impact Assessment and Rehabilitation Studies
- Human resource development
- Legal opinion on mine regulatory regime
- Energy fuels and their selection on techno economic parameters
- Special focus on coal and rock salt mining
- Drilling and blasting for underground and surface mining techniques
- Safety measures for mines operation
- Consultancy relating to manufacturing, marketing & service areas

The contact information of the consultant is presented in Table.

Company	HTMA (Pvt.) Ltd.
Address	81-A Bridge Colony, Lahore cantt
Representative	Engr. Harris Naeem
Designation	Director Operations
Contact	0304 0444440
e-Mail	<a href="mailto:harris.naeem@hitechma.com">harris.naeem@hitechma.com</a>
Website	<a href="http://www.hitechma.com">www.hitechma.com</a>

### 1.5 Brief Description of the Project

HY Construction Pvt. Ltd. intends to develop a state-of-the-art Technological estate titled "Green Technology Zone, Lahore" over an area of 8.826 acres. The objective is to promote organized Technological development, specifically focusing on technology-driven enterprises, by providing an ecosystem where industries can operate efficiently and competitively in both domestic and international markets. The Green Technology Zone aims to resolve Technological challenges through a 'One Window' operation system, streamlining processes and facilitating ease of doing business.

A key feature of this development is its application for Green Technology Zone status, under which a strategic mix of technology-focused and Technological enterprises will be introduced. The project is estimated to create up to 1,000 employment opportunities for the local population, while also contributing to the national economy by earning foreign exchange through exports and reducing import reliance through substitution.

Enterprises operating within the proposed Green Technology Zone will benefit from the fiscal incentives outlined in the STZ Act. These include a one-time exemption from customs duties and taxes on all capital goods imported for the development, operation, and maintenance of the STZ—for both the developer and zone enterprises—as well as an income tax exemption for a period of ten years.

Strategically located on the main Mull-Talib Sarai Road, the site lies just 1.8 kilometers from the Sundar Industrial Estate Gate and shares a boundary with its rear wall. The nearest major town is Raiwind, located close to Gate 8 of the proposed STZ. The area enjoys excellent connectivity with key transport arteries, with a distance of approximately 7 kilometers from Multan Road (Sundar).

The proposed Green Technology Zone is designed to integrate strategic advantages and regional resources, particularly to support small and medium-sized enterprises (SMEs) of Lahore and surrounding regions in terms of technology. The master plan for the Green Technology Zone is provided in Figure 1-1 and attached as Appendix IX.

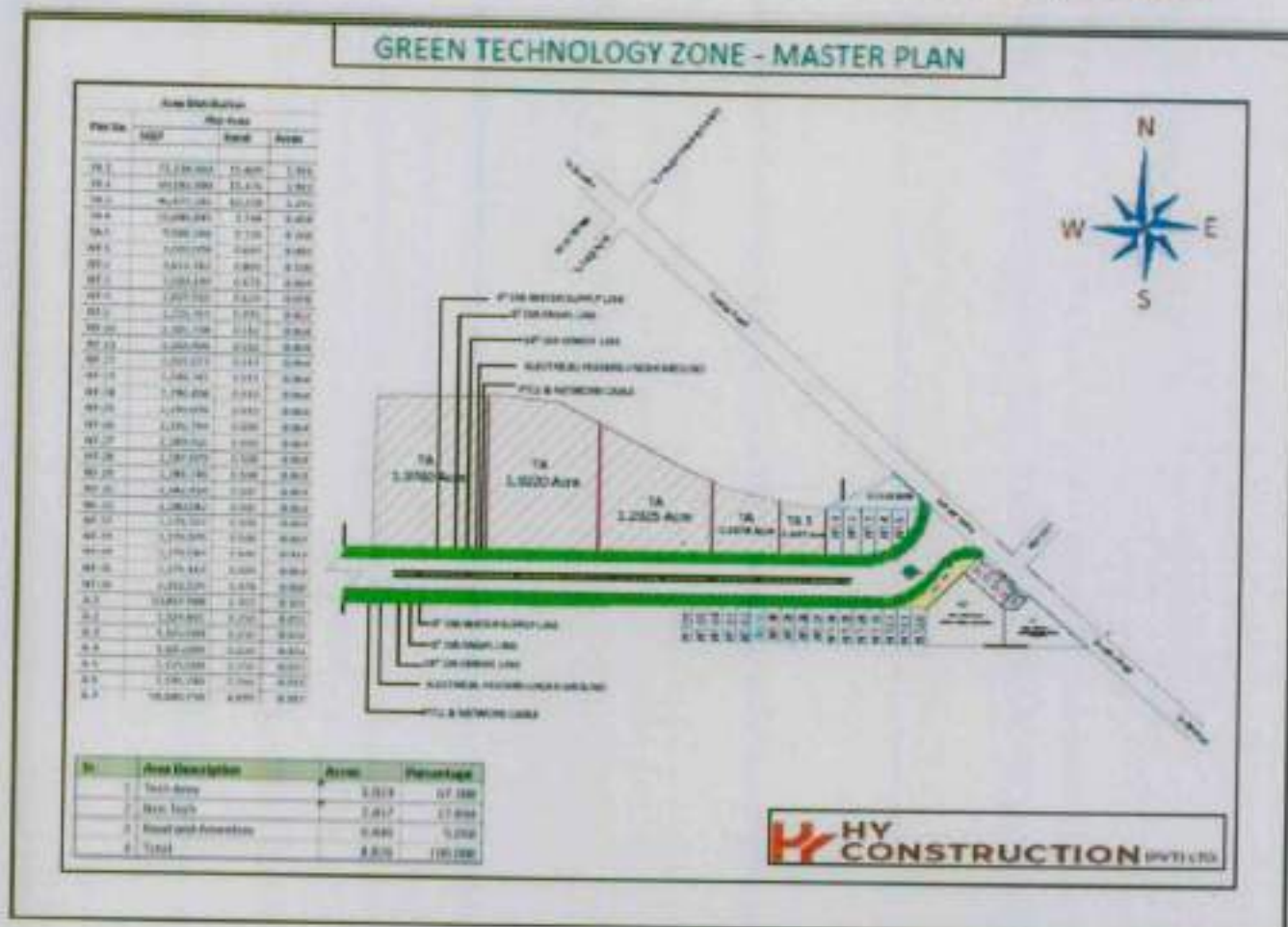


Figure 1-1 Layout of the Project

The proposed area will be covered under;

- 2 Technology and Technological Plots for high-tech manufacturing, IT services, R&D units, and tech-based SMEs
- 3 Internal Road Network and Infrastructure to ensure smooth accessibility and logistics within the zone
- 4 Essential Utilities and Amenities, including power, water supply, wastewater management, and high-speed internet connectivity
- 5 Designated Commercial Areas to support business services, retail, and community needs of professionals working within the zone
- 6 Overall distribution/utilization is based on international standards and need assessment surveys.

## **1.6 Types of Industries High Potential Sector for following industries in Lahore STZ**

- Information Technology & Software Services
- Electronics and Mobile Manufacturing
- Light Engineering & Auto Parts
- Pharmaceuticals and Life Sciences
- Food & Beverages
- Plastic & Polymer Industry
- Textile Tech
- Chemical Industry
- Warehousing & Logistics
- Manufacturing Services

## **1.7 Alternative Considerations**

Alternatives are generally identified and analyzed to determine the most viable method of achieving the project objectives. During the recent years, environmental and social concerns related to the developmental activities, are gaining significant momentum all over the world. Therefore, besides the technical and financial considerations, it is also required to recognize the environmental and social consequences of developmental projects,

Alternatives considered in this EIA include following:

- No project option;
- Alternate technologies for Economical Zone;
- Site Alternatives, their Selection and Rejection Criteria
- Design/technology alternatives, their selection and rejection criteria
- Environmental Alternatives, their selection and rejection criteria
- Economic Alternatives, their selection and rejection criteria

## 2. ENVIRONMENTAL LEGISLATIVE, REGULATORY AND INSTITUTIONAL FRAMEWORK

This Chapter presents information on the national and provincial (Punjab) legislation, regulation and guidelines applicable to the proposed Project. In addition, this Chapter also provides information on other relevant international environmental laws, regulations and guidelines (such as those of the WB, IFC and ADB).

At the current time, only the national and provincial environmental regulations are applicable to proposed Project. However, other relevant international environmental laws and regulations (such as those of the WB, IFC and ADB) have been considered as they may be required in the event that the proposed Project goes for lending from any international agency.

The preparation and submission of an Environmental Impact Assessment (EIA) report for any development project is a statutory obligation under Punjab Environmental Protection Act, 1997 (Amended 2017) in terms of Section 12 of the Act which states as under:

*"No proponent of a project shall commence construction or operation unless he has filed with the Provincial Agency, an initial environmental examination or where the project is likely to cause an adverse environmental effect, an environmental impact assessment, and has obtained from the Provincial Agency approval in respect thereof."*

The current Project falls under Schedule-II of subsection H under list 5 Technological Estate (Including Export Processing Zones) of IEE/EIA Regulation 2022 and thus requires Environmental Impact Assessment- EIA

### 2.1. National Requirements

#### 2.1.1. Background

Pakistan's Environmental Policy is based on participatory approach to achieving objectives of sustainable development through legally, administratively and technically sound institutions. In 1975, the Federal Environment Ministry was established in Pakistan as follow up to Stockholm declaration of 1972. The Ministry is responsible for promulgation of the **Environmental Protection Ordinance of Pakistan, 1983**. This was the first comprehensive legislation prepared in the country. The main objective of Ordinance was to establish institutions (i.e. to establish Federal and Provincial Environmental Protection Agencies (EPAs) and Pakistan Environmental Protection Council (PEPC)).

In 1992 Pakistan attended the Earth Summit in state of Brazil (Rio-De Janeiro) and thereafter became party to various international conventions and protocols. This political commitment augmented the environmental process in the country. In the same year, Pakistan prepared the **National Conservation Strategy (NCS)** which provides a broad framework for addressing environmental concerns in the country.

In 1993 National Environmental Quality Standards (NEQS) were designed.

In December 1997, the Pakistan Environmental Protection Act (PEPA) was enacted, repealing the Environmental Protection Ordinance of Pakistan, 1983.

Further discussion is provided below regarding national environmental laws, regulations and guidelines applicable to proposed Project.

#### 2.1.2. *Pakistan Environmental Protection Act (PEPA), 1997*

The Pakistan Environmental Protection Act (PEPA) is the supreme environmental legislation in the country. PEPA provides for:

- The establishment of Pakistan Environmental Protection Council (PEPC);
- The framework for implementation of NCS;
- The establishment of Federal and Provincial Environmental Protection Agencies;
- The establishment of Provincial sustainable development funds;
- The protection and conservation of species;
- The conservation of renewable resources;
- The establishment of environmental tribunals and appointment of Environmental Magistrates; and,
- Initial Environmental Examination<sup>15</sup> and Environmental Impact Assessment

Following sections and sub-sections of PEPA deal with the IEE and EIA:

- **Section 12** provides the requirement for environmental assessment. Section 12 provides that no proponent of a project shall commence construction or operation unless he has filed with the Federal Agency for an Initial Environmental Examination (IEE) or Environmental Impact Assessment (EIA) and has obtained approval from Environmental Protection Agency (EPA).
- **Section 17(1)** provides the penalties for non-compliance to section 12 and other sections of the PEPA.
- **Section 22** provides for the appeals to environmental tribunals against any order of federal or provincial EPA.
- **Section 26** provides the delegation of powers by federal agency to any provincial government, provincial agency, local council or local authority.
- **Section 33(2)(f)** provides for the regulations to categorize the projects for IEE and EIA.
- **Section 33(2)(g)** provides that federal agency may issue guidelines for preparations of IEEs and EIAs, and development of procedures for filing and review of IEEs and EIAs.
- **Section 33** provides to make regulations by notification in official gazette and with approval from federal government.

### **2.1.3. Pak-EPA, Policy and Procedures for Filing, Review and Approval of Environmental Assessment**

Purpose of Pak-EPA, Policy and Procedures for Filing, Review and Approval of Environmental Assessment is to establish a policy context and administrative procedures for environmental assessment in Pakistan.

According to this policy, federal EPA has jurisdiction to IEE and EIA for the following types of projects:

- Projects located on federal land
  - Technology-related or defense technology projects
  - Projects with trans-country technological impacts
  - Projects with trans-provincial technological impacts
- Provincial EPAs are responsible authorities for all other projects under their respective provincial jurisdictions.

In 2010, through the 18th Amendment to the Constitution of the Islamic Republic of Pakistan, 1973, environment became a provincial subject, empowering each province to make its own law (except for the Islamabad Capital Territory (ICT) or areas in the federation not included in any province).

In 2017, Punjab adopted the PEPA with minor amendments, calling it The Punjab Environmental Protection Act, 1997. Punjab EPA is the responsible authority for proposed Project.

### **2.1.4. Pak-EPA, Guidelines for Preparation and Review of Environmental Reports**

The scope of Pak-EPA, Guidelines for Preparation and Review of Environmental Reports is confined to general aspects of the environmental reports. For the specific environmental issues, sector-specific guidelines are issued time to time by Pak-EPA. This guideline specifically provides, in terms of the general aspects:

Process of Commencing Environmental Assessment, including major steps of environmental assessment and format of the IEE/EIA specific to technology-based projects.

- Process and Procedures of Impact Assessment, with a focus on technological impacts, innovation, and digital infrastructure.
- Mitigation and Management of identified environmental and technological impacts, including resource efficiency and waste management in tech industries.
- Reporting on environmental findings and compliance, with an emphasis on technology-driven data and analysis.
- Reviewing of Environmental Reports and Decision Making, based on technology sector-specific impacts and best practices in environmental management.

- Monitoring and Auditing by the EPA, with specific attention to the performance of technology-related infrastructure and development.
- Project Management, ensuring efficient execution and sustainable practices in the development of technology-based industries.
- The **Appendix A** of the guidelines provides the global, cross-sectoral and cultural issues related to IEE and EIA.

**2.1.5. Pak-EPA, Guidelines for Public Consultation during IEE / EIA**

Pak-EPA, Guidelines for Public Consultation during IEE / EIA, provide:

- Stakeholder identification and objectives of stakeholder involvement in IEE / EIA process;
- The methods and techniques of effective public participation during IEE / EIA process;
- Consensus building and dispute resolution among project proponent and affected communities and other stakeholders; and,
- Facilitation for stakeholder involvement.

The IEE /EIA decision making process in Pakistan is shown in Figure 2-1.



**Figure 2-1: Electricity Consumers in Pakistan**

### **2.1.6. National Environmental Quality Standards**

The National Environmental Quality Standards (NEQS) have been promulgated under the PEPA. The ones relevant to the proposed Project are provided in the following Exhibits:

- **Exhibit 2-1:** NEQS for Municipal and Liquid Technological Effluents.
- **Exhibit 2-2:** National Environmental Quality Standards for Gaseous Emissions.
- **Exhibit 2-3:** Standards for Motor Vehicle Exhaust and Noise.
- **Exhibit 2-4:** Standards for Ambient Air Quality.
- **Exhibit 2-5:** Standards for Ambient Noise.
- **Exhibit 2-6:** Standards for Drinking Water.

At the current time, only the national and provincial environmental regulations (i.e. the NEQS) are applicable to proposed Project. However, other relevant international environmental laws and regulations (such as those of the WB, IFC and ADB) have been considered as they may be required in the event that the proposed Project goes for lending from any international agency.

### **2.1.7. National Environmental Institutions in Pakistan**

A brief account of environmental institutions in Pakistan is provided in this section

#### **2.1.8. Federal Ministry of Climate Change**

The Federal Ministry of Climate Change is the apex level institution in Pakistan dealing with matters of environment and climate change. The Ministry comprises five wings / sections:

- Administration Wing;
- Development Wing;
- Forestry Wing;
- International Cooperation Wing; and,
- Environment Wing

The Environment Wing deals with national and international environmental matters. The Pak-EPA is closely linked with the Federal Ministry of Climate Change.

#### **2.1.9. Pakistan Environmental Protection Council (PEPC)**

The Pakistan Environmental Protection Council (PEPC) was constituted in 1984 under Section 3 of the Environmental Protection Ordinance of Pakistan, 1983. The PEPC is headed by the Prime Minister of Pakistan and contains representatives from: trade and industry; leading NGOs; educational intuitions; expert journalists; and, and concerned ministries.

The key function of the PEPC is to co-ordinate and supervises the enforcement of PEPA. Other functions include:

- Approval of National Environmental Policies and ensuring their implementation in the context of technology and innovation-driven development.
- Approval of National Environmental Quality Standards (NEQS), particularly those relevant to technology, digital infrastructure, and Technological practices.
- Provision of Guidelines for the Protection and Conservation of species, habitats, and biodiversity, with a focus on minimizing the ecological footprint of technology-based industries, and conserving both renewable and non-renewable resources.
- Coordination of the Integration of Sustainable Development Principles into national development plans and policies, emphasizing the adoption of green technologies, eco-friendly practices, and circular economy principles in tech sectors.

#### **2.1.10. Pakistan Environmental Protection Agency (Pak-EPA)**

Pakistan Environmental Protection Agency (Pak-EPA) was established under Section (5) of PEPA. The basic function of Pak-EPA is the implementation of the PEPA and development of associated regulations and guidelines.

Other functions of Pak-EPA are as follows:

- Review of IEE and EIA reports of relevant projects and environmental approvals granted;
- Issue of certificates for establishment of environment labs in the Islamabad Capital Territory;
- Preparation (or revision) and establishment of provincial Environmental Quality Standard (EQS) with approval of Pakistan Environmental Protection Council (PEPC);
- Promotion of research and the development of science and technology which may contribute to the prevention of pollution, protection of the environment, and sustainable development; and,
- Identification of the needs for, and initiation of, legislation in various sectors of the environment.

### **2.1.11. 18th Amendment to the Constitution of the Islamic Republic of Pakistan**

In 2010, through the 18th Amendment to the Constitution of the Islamic Republic of Pakistan, 1973, environment became a provincial subject, empowering each province to make its own law (except for the Islamabad Capital Territory (ICT) or areas in the federation not included in any province).

### **2.1.12. Status of PEPA after 18th Amendment**

In the light of provisions of 18<sup>th</sup> Amendment:

- PEPA can be repealed or amended to make it applicable to a particular province, through a Provincial Act enacted by the Provincial Assembly concerned; and,
- PEPA shall continue to remain in force until repealed or amended by the competent authority, which is now the Provincial Assembly in respect of each Province and Parliament in respect of the ICT / areas in the federation not included in any province.

At present, under the provisions of 18th Amendment, almost all provinces of Pakistan have enacted their own Provincial Environmental Protection Act by making appropriate amendments to PEPA.

### **2.1.13. Status of Pak-EPA Rules and Regulations after 18th Amendment**

According to the 18th Amendment, powers to make rules and regulations have been delegated to the provinces.

### **2.1.14. Pak-EPA, Review of IEE and EIA Regulations, 2022**

Powers relating to review of IEE and EIAs have been delegated to the Provinces except for the:

- Military projects;
- Projects with trans-country impacts; and,
- Projects with tech-province impacts.

### **2.1.15. Environmental Quality Standards**

Under the 18th Amendment, the power to prepare, establish and revise the Environmental Quality Standards (EQS), have been delegated to provincial EPAs. Now provincial EPAs can prepare, establish and implement the EQS with approval from Provincial Environmental Protection Council.

As mentioned earlier, Punjab EPA is the responsible authority for proposed Project.

### **2.1.16. Provincial Environmental Setup in Punjab**

On 31 December 1983, under the Environmental Protection Ordinance of Pakistan, 1983, a provision was made for the establishment of a Provincial Environmental Protection Agency.

In 1985, the Federal Government was requested to delegate powers of the Agency to the Housing Physical and Environmental Planning (HP&EP) Department. On 1 July 1987, the Punjab EPA was formed.

On 31 December 1996, a separate administrative unit, Environment Protection Department (EPD) was formed under the Government of the Punjab. EPA Punjab was then detached from the HP&EP Department and now works as functional unit under the EPD.

Punjab EPA enacted the Provincial Environmental Protection Act in November 2022 by making appropriate amendment to the PEPA. The Punjab EPA now undertakes functions as delegated under the Punjab Environmental Protection Act 1997.

EIA related functions are performed through Environmental Approval Section of the Punjab EPA. The main functions of Environmental Approval Section are

- To review the IEE / EIA reports;
- To conduct the public hearing in EIA cases;
- To issue the environmental approvals;
- To monitor the conditions of the environmental approvals; and,
- To initiate the required actions against the proponents in case of non-compliance of conditions of the environmental approvals.

### **2.1.17. Other National and Provincial Legislation Applicable to the Proposed Project**

Besides the environmental laws and regulations of Pakistan and Punjab province, proposed Project also has certain obligations under various national and provincial laws and regulations. These are discussed in this section.

### **2.1.18. Land Acquisition Act, 1894**

The Land Acquisition Act (LAA) of 1894, which has been amended from time to time, has been the de-facto policy governing land acquisition and compensation issues in the country. The LAA is the most commonly used law for land acquisition and other properties for development projects. It comprises of 55 Sections pertaining to: area notifications and surveys; acquisition; compensation and distribution of awards; and, disputes resolution, penalties and exemptions.

For the proposed **Special Technology Zone (STZ)** project, any land acquisition will adhere to the procedures outlined in the LAA. Additionally, where necessary, supplementary procedures based on **international best practices** (such as the **World Bank's Operational Policy on Resettlement – OP 4.12**) will be followed to ensure fair compensation and resettlement practices, particularly where technology-driven infrastructure and development impact local communities.

#### **2.1.19. Canal and Drainage Act 1873**

The Canal and Drainage Act 1873 entitles the government to use and control water of all rivers, streams and canals for public purposes. The Act also provides rates for irrigation water supply.

Provincial governments in Pakistan have adopted Part II (Application of Water for Public Purpose) of the Canal and Drainage Act, 1873, through appropriate amendments. The Irrigation Department in Muzaffargarh will oversee the allocation and supply of water to the proposed Special Technology Zone (STZ) project, ensuring adequate water resources for both Technological operations and the development of high-tech infrastructure.

#### **2.1.20. Punjab Wildlife Act, 1974**

This Act aims to protect the province's wildlife resources directly and other natural resources indirectly. It classifies wildlife by degree of protection (i.e. animals that may be hunted on a permit or special license, and species that are protected and cannot be hunted under any circumstances). The Act specifies restrictions on hunting and trade in animals, trophies, or meat. The Act also defines various categories of wildlife protected areas (i.e. national parks, wildlife sanctuaries and game reserves). Provisions in this Act will be applicable throughout the design, construction, operation and maintenance, and decommissioning phases of the proposed Project

#### **2.1.21. Punjab Forest Act 2010**

The Punjab Government enacted the Punjab Forest Act in 2010 by making amendments to the Forest Act 1927. The Forest Act deals with the matters related with protection and conservation of natural vegetation / habitats. The Act empowers the concerned agency to declare protected and reserved forest areas and maintain these forests. In spite of the fact that Act recognizes the right of people for access to the natural resources for their household use, it prohibits unlawful cutting of trees and other vegetation.

In line with the provisions of the **Punjab Forest Act**, any tree cutting or vegetation removal required for the construction of the **Special Technology Zone (STZ)** will necessitate **prior permission** from the **Punjab Forest Department**, ensuring that the development complies with sustainable land use and environmental conservation regulations.

#### **2.1.22. Antiquities Act, 1975**

The Antiquities Act of 1975 ensures the protection of historical and archaeological resources in Pakistan. The Act is designed to protect 'antiquities' from destruction, theft, negligence, unlawful excavation, trade and export. Antiquities have been defined in the Act as ancient products of human activity, historical sites, or sites of anthropological or cultural interest and national monuments etc. The Act prohibits new construction in the proximity of a protected antiquity and empowers the Government of Pakistan to prohibit excavation in any area that may contain articles of archaeological significance.

Under this Act, the project proponents are obligated to:

- Ensure that no activity is undertaken in the proximity of a protected antiquity; and,

If, during the course of the project, an archaeological discovery is made, it should be protected and reported to the Department of Archaeology, Government of Pakistan, for further action.

#### **2.1.23. Punjab Factories Act 1934 (Amended 1940)**

The clauses relevant to the proposed Project are those addressing the health, safety and welfare of the workers, disposal of solid waste and effluents, as well as damage to private and public property. The Act also provides regulations for handling and disposing toxic and hazardous substances.

The PEPA supersedes parts of this Act pertaining to environment and environmental degradation

#### **2.1.24. Explosives Act 1884**

The Explosives Act 1884 provides regulation for the manufacture, possession, use, sale, transport, import and export of explosives. Under this Act, project developers (and contractors) are bound on safe handling, transportation and using explosives during construction of proposed Project.

#### **2.1.25. Employment of Child Act 1991**

The Employment of Child Act 1991 disallows the use of child labor in the country. The Act defines a child as a person who has not completed his / her fourteenth year of age. The Act states that no child shall be employed or permitted to work in any of the occupation set forth in the Act (such as transport sector, railways, construction, and ports) or in any workshop wherein any of the processes defined in the Act are undertaken. Under this Act, project developers (and contractors) are not permitted to allow any child labor during the construction and operation of proposed Project.

#### **2.1.26. Pakistan Penal Code 1860**

Pakistan Penal Code 1860 deals with the offences where public or private property or human lives are affected due to intentional or accidental misconduct of an individual or organization. The Code also addresses control of noise, noxious emissions and disposal of effluents. Most of the environmental aspects of the Code have been superseded by the PEPA.

#### **2.1.27. Punjab Power Policy 2009**

Salient features of Punjab Power Policy, 2009 are as below:

- Punjab Power Policy is applicable for the development of all types of technologies such as coal, biomass, hydro, solar and wind;
- Concessions in duties / tax regime announced by Government of Pakistan are applicable for projects developed under the Policy;
- Standard format of Power Purchase Agreement (PPA), Implementation Agreement (IA) and Water Usage Agreement (WUA) are available in Policy;
- Dispersal of power is allowed in 3 modes: (i) Sale to utility company (WAPDA / DISCO); (ii) Sale to local area by establishing distribution network; and, (iii) Sale to dedicated industry (Self Utilization);
- Use of Government land is allowed in two modes: (i) Lease; and, (ii) Equivalent Equity participation;
- Projects may be developed in private Sector / JV mode; and,
- Mode of investment for thermal is normally "Build, Own and Operate" basis (BOO) with concession period of 30 years.

### **2.2. International Environmental Requirements**

This section discusses other relevant international environmental laws, regulations and guidelines (such as those of the WB, IFC and ADB). As mentioned earlier, international environmental laws and regulations (such as those of the WB, IFC and ADB) have been considered as they may be required in the event that the proposed Project goes for lending from any international agency.

#### **2.2.1. Environmental and Social Requirements of the World Bank**

Environmental Assessment is one of the 10 environmental, social, and legal Safeguard Policies of the World Bank. Environmental Assessment is used in the World Bank to identify, avoid, and mitigate the potential negative environmental impacts associated with

Bank lending operations. In World Bank operations, the purpose of Environmental Assessment is to improve decision making, to ensure that project options under consideration are sound and sustainable, and that potentially affected people have been properly consulted.

The World Bank's environmental assessment policy and recommended processing are described in Operational Policy (OP) / Bank Procedure (BP) 4.01: Environmental Assessment. This policy is considered to be the umbrella policy for the Bank's environmental 'safeguard policies.

#### **2.2.2. Environmental and Social Requirements of IFC**

The following section provides a brief summary of the environmental and social requirements of the IFC.

#### **2.2.3. IFC Sustainability Framework**

IFC's Sustainability Framework is aimed to ensure the IFC commitment to sustainable development and reflects the Corporation's approach to risk management. The Sustainability Framework comprises IFC's Policy and Performance Standards on Environmental and Social Sustainability, and IFC's access to Information Policy. The Policy on Environmental and Social Sustainability describes IFC's commitments, roles, and responsibilities related to environmental and social sustainability

#### **2.2.4. IFC Performance Standards on Environmental and Social Sustainability**

IFC's Performance Standards on Environmental and Social Sustainability define the responsibilities of IFC clients for managing their environmental and social risks. The Performance Standards are:

- **Performance Standard 1:** Assessment and Management of Environmental and Social Risks and Impacts.
- **Performance Standard 2:** Labor and Working Conditions.
- **Performance Standard 3:** Resource Efficiency and Pollution Prevention.
- **Performance Standard 4:** Community Health, Safety, and Security.
- **Performance Standard 5:** Land Acquisition and Involuntary Resettlement.
- **Performance Standard 6:** Biodiversity Conservation and Sustainable Management of Living Natural Resources.
- **Performance Standard 7:** Indigenous Peoples.
- **Performance Standard 8:** Cultural Heritage.

Performance Standard 1 applies to all projects that have environmental and social risks and impacts.

#### **2.2.5. IFC Environment, Health and Safety (EHS) Guidelines**

The IFC EHS Guideline are technical reference documents with general and industry-specific examples of Good International Industry Practice (GIIP), as defined in IFC's Performance Standard 3 on Pollution Prevention and Abatement. These Guidelines are used as a technical source of information during project appraisal activities.

#### **2.2.6. IFC Environmental and Social Review Procedures**

IFC investment timing in relation to a client's business activities and project implementation varies from project to project. IFC does not control the timing of its entry into a project, however IFC's engagement, more often than not, occurs after the project is conceived, with the site selected and development started.

Therefore, IFC's approach is, whenever possible, to take full advantage of assessment work undertaken by the client before IFC's entry into the transaction and where necessary strengthening environmental assessment (EA) analysis without replicating processing requirements. Of particular importance is the adequacy of the client's Environmental and Social Management System.

Whenever IFC makes an investment in a project, following environmental and social review procedures are adopted:

- Conduct due diligence of the proposed investment activity;
- Assist the client in developing measures to avoid, minimize, mitigate, or compensate for environmental and social impacts;
- Categorize the project to specify IFC's institutional requirements;
- Identify opportunities to improve environmental and social outcomes;
- Monitor and document the client's environmental and social performance throughout the life of IFC's investment; and,
- Disclose information about its institutional and investment activities in accordance with the Policy on Disclosure of Information

All environmental and social studies, EA documentation, records and associated information are stored in Desk. Desk is an electronic workspace that provides secure access to several corporate applications and serves as a one-stop-shop for project processing in IFC.

#### **2.2.7. Environmental and Social Requirements of ADB**

ADB Environmental Assessment Guidelines describe how to fulfill the requirements outlined in ADB's Environment Policy and Operations Manual on Environmental Considerations in ADB Operations. Information on ADB's policies and procedures for

conducting and reporting on the environmental assessment is also provided for all types of projects.

Strategic tools such as country environmental analysis and strategic environmental assessment are also included in guidelines.

### 3. CONSIDERATION OF ALTERNATIVES

The EIA guidelines define alternatives as "different means of meeting the general purpose and requirements of the activity, which may include alternatives to the: Site (location of property), Type of Activity to be undertaken, Design or Layout, and Technology to be used."

A key requirement in the EIA process is the identification and consideration of feasible alternatives during the early or scoping stages of the environmental assessment. The importance of this requirement lies in the fact that alternatives serve as a form of mitigation. Certain alternatives may help avoid or reduce the nature, extent, or duration of impacts on various aspects of the receiving environment, such as air quality, water use, or biodiversity.

Given the growing importance of sustainability and technological innovation, alternatives for the Special Technology Zone (STZ) project are identified and analyzed not only from a technical and financial perspective but also considering their environmental and social impacts. This reflects the increasing global momentum around environmental and social considerations in development.

The alternatives considered in this chapter include:

- No project option;
- Site Alternatives, their Selection and Rejection Criteria
- Environmental Alternatives, their selection and rejection criteria
- Economic Alternatives, their selection and rejection criteria

#### 3.1. No Project Option

A "no project option" (or "no development") simply implies no harm to environment and society. However, almost all types of economic development have some social and environmental benefits associated with it. The ultimate objective of this EIA is to look into the options (measures) which can be adopted to maximize the positive effects and minimize the adverse effects of the proposed Project on environment and society.

Under the current crisis in Pakistan, a "no project option" is considered to be the least viable option. The proposed Project can be considered as one of the pioneer Technological state in Pakistan. It is likely to address many issues related to Technological zone in the country. This is also likely to reduce the risk for future investment and will attract more investors to invest in industries in Pakistan. In the absence of the proposed Project, this process is likely to be delayed.

### 3.2. Site alternatives, their Selection and Rejection Criteria

The selection of the site for the proposed Special Technology Zone (STZ) was influenced by a combination of economic analysis, cost estimations, and judgment-based factors that affect the long-term functionality and success of the technology-driven Technological area. These factors, which may not always be quantified mathematically, have a significant impact on the efficiency and sustainability of operations within the zone.

Sites around Lahore were considered for the establishment of the proposed STZ, as Lahore has become a major hub for technology and Technological development in the country. In alignment with the general factors influencing the location of technology zones, the potential sites were evaluated based on the following criteria:

- o **Land:** Suitability, adequacy, and comparable cost of the sites
- o **Labor:** Availability and affordable wage rates — taking cost to benefit analysis into consideration — of the skilled, semi-skilled, un-skilled person is required.
- o **Transportation:** Regular and sufficient transportation facilities for delivery of materials, dispatch of finished products and for the use of the employees.
- o **Market:** Size of the local market and the cost of transporting to central markets vis-a-vis the extent of demand.

### 3.3. Environmental Alternatives, their Selection and Rejection Criteria

Every development project causes alteration in the existing environment inevitably that can be positive as well as negative. The negative environmental impacts of the proposed industry can be gaseous emission, increased noise levels, excessive water usage, groundwater contamination, and surface water contamination etc. The 'no-go' alternative, also referred as the 'no-action' alternative or 'zero-alternative', can be a consideration in this case. It assumes that the activity does not go ahead, implying a continuation of the current situation or the status quo. It is basically a consideration of the original and undisturbed environment without any development. This option is considered to ensure that all possibilities have been taken into consideration before deciding on a final course of action and also to provide a baseline situation against which the other suggested alternatives can be measured.

In situations where negative environmental impacts are of significant concern, the 'no-go' alternative becomes particularly important. In certain cases, the 'no-go' alternative may be the only realistic option and, therefore, plays a crucial role in the decision-making process. However, it is not always accurate to assume that the 'no-go' alternative is inherently the best choice from an environmental standpoint.

For Special Technology Zone (STZ) projects, it is important to consider that many Technological expansions and upgrades, known as the 'go' alternative, may offer opportunities to implement technological advancements. These advancements can include replacing outdated equipment with more efficient, environmentally friendly technologies that reduce emissions to the air and water, while also meeting the goal of expanding the production capacity of existing facilities.

Thus, the 'go' alternative in the context of an STZ can often lead to improvements in environmental performance alongside technological growth, making it a viable alternative to the 'no-go' option in some cases. The 'no-go' alternative provides the means to compare the impacts of project alternatives with the scenario of a project not going ahead. In evaluating the 'no-go' alternative here; the benefits of the proposed project are more valued for the country.

#### **3.4. Economic Alternatives, their Selection and Rejection Criteria**

Economic alternatives were considered taking into consideration the capital and operational costs for the proposed unit. Land cost, infrastructure cost and machinery cost were taken into account as the deciding economic factor. Also, state of the art machinery will be employed considering it as one-time investment and thus minimizing the maintenance cost during the operational phase. Additionally, it will contribute towards uninterrupted production during operational phase.

#### **3.5. Analysis of Alternatives**

The No Project Option for this project is feasible because:

**Prime Location:** The site is strategically positioned with direct connectivity to major motorways and key communication routes, such as Multan Road, Ferozpur Road, and Raiwind Road, ensuring seamless access for transportation, logistics, and quick distribution of technology-based products.

**Demand for Tech-Enabled Technological Plots:** Due to the non-availability of technology-oriented Technological plots in established zones like Quaid Azam Technological Estate Kot Lakhpat and Sundar Industrial Estate, there is an increasing demand for an advanced Technological estate that offers technology-ready plots, state-of-the-art infrastructure, and a one-stop-shop for technological services essential for high-tech enterprises.

**Proximity to Innovation Hubs:** The proposed location for the STZ is near existing Technological estates, making it a prime area for tech-centric industries. Its proximity to Lahore City and established Technological hubs further enhances the appeal for investors in technology-driven sectors.

**Investment Feasibility for Technology-Based Industries:** The STZ will leverage the region's resources and expertise to foster investment in technology-centric industries, particularly those in the Small and Medium Enterprises (SME) sector, which include:

- Information Technology (IT) Services
- Software Development
- Tech Startups and Incubators
- Mobile App Development
- Electronics Manufacturing
- Smart Manufacturing
- Robotics and Automation
- Artificial Intelligence (AI)
- Cloud Computing
- Medical Device Innovation
- Data Analytics and Big Data Solutions
- IoT (Internet of Things) Solutions
- 3D Printing and Additive Manufacturing
- Cybersecurity Solutions
- Renewable Energy Technologies (such as solar, wind power technologies)
- The STZ also very feasible for local investors of this region specially for Lahore & Sheikhpura to start new production units with special connectivity and other advantages.

### 3.6. Alternative Sites

No alternative site is proposed for assessment on the basis that the proposed site: -

- Is zoned for STZ,
- is enroot in the China Pakistan Economic Corridor
- Is easily accessible through motorways
- It falls in the Technological Zone as per Master Plan of LDA

## 4. DESCRIPTION OF THE PROJECT

This section of the study concentrates on details of the project and its salient features; such as location, site layout, objectives, cost and magnitude of operation and various phases. Inputs and discharges relevant to different phases of the project, such as electricity & materials, etc. have also been examined as a response to possible environmental concerns.

Punjab Environmental Protection Act, 1997 (amended 2017) stipulates that an EIA/IEE is mandatory for Development Projects. Therefore, an IEE/EIA is required for projects for policy procedure, filing, review and approval of environmental assessment. The proposed project is to develop Green Technology Zone to international standards. "This project is enlisted in EIA/ IEE regulation 2022 Schedule- II of subsection H under list 5 Technological Estate (Technological Export Processing Zone) of IEE/EIA Regulation 2022 and thus requires Environmental Impact Assessment- EIA."

### 4.1. Objectives of the Project

- The main objective of the project is to develop Green Technology Zone to achieve Technological development and management orientation objectives under the umbrella of Government of Pakistan's vision for Technologicalization, job creation and economic growth.
- We expect to introduce a mix of Technological companies in Green Technology Zone Special Economic Zone proposed by HY Construction Pvt. Ltd that would contribute to the Economy by generating employment of 4000 to 5000 persons.
- The fiscal benefits under the STZ law include a one-time exemption from custom duties and taxes for all capital goods imported into Pakistan for the development, operations and maintenance of a STZ (both for the developer as well as for the zone enterprise) and exemption from all taxes on income for a period of ten years.

### 4.2. Nature, Location and Site Layout of the Project

Green Technology Zone GTZ is ideally located near Sundar Industrial Estate, the project is linked with all major cities, sea ports and dry ports of the country through a network of national Highways and Motorways. The closest bigger town is Raiwind. It is around 25 Km from Thokar Niaz Beg and around 25 Km from Gajju-Matta Ferozpur Road. It is well linked with the main roads as well. Distance from the proposed STZ to Multan Road (Sundar) is around 7 Km. The project location is represented in Figure No. 4-1.



Figure 4-1 Location of the Project

### 4.3. Master Plan for The Project

The master plan for the project is given in Appendix IX- of the report.



Figure 4-2 Master of the Proposed STZ

#### 4.4. Land Use on the Site

The area is present in the Technological area adjacent to the Sundar Industrial Estate.

#### 4.5. Road Access

The project site is easily accessible from Manga Raiwind Road and Sundar Raiwind Road, Lahore.

- around 25 Km from Thokar Niaz Beg
- around 25 Km from Gajju-Matta Ferozpur Road
- around 7 Km Multan Road (Sundar)

#### 4.6. Cost and the Magnitude of Operation

The cost and its breakup is presented in Table 4-1

Table 4-1 Cost of the Project

No.	Description	Million Price (PKR)
	Cost of land	600.48
	Development Cost i.e., Infrastructure Works etc.	300.61
	Miscellaneous	35.87
	<b>Total Price</b>	<b>936.96</b>
	Contingencies @ 5%	46.85
	<b>Grand Total</b>	<b>983.81</b>

- Detailed site survey, planning and demarcation of the various regions in the project area
- Site suitability assessment
- Process of designing
- Purchase and delivery of equipment
- Development of industries
- Testing and commissioning
- Plantation of various ecologically important species on the designated green space

#### 4.7. Schedule of Implementation

##### 4.7.1 Planning

The proposed project is at its feasibility study stage. This EIA study is a basic and necessary part of the overall planning for the project and will be integrated into the feasibility study.

#### 4.7.2. Design

The construction contractor and fabrication contractor will be hired based on the cost. The technology adopted for the proposed project establishment will be up to date. Tentative project implementation schedule is presented below in Table 4-2.

**Table 4-2 Time Schedule for the Project Development**

Sr.	Description	Months
1	Soil Report	2
2	Civil Design	4
3	Process and Electrical Design	8
4	Equipment Manufacturing and Delivery	13
5	Civil Construction	16
6	Mechanical and Electrical Erection	10
7	Testing & Commissioning	3
Total Months		54

#### 4.8. Types of Industries

High Potential Sector for following industries in Lahore STZ.

- Advanced Manufacturing Services
- Smart Warehousing Solutions
- Textile Industry with Smart Manufacturing
- Light Engineering with Automation
- Auto Parts Manufacturing and Robotics
- Plastic Industry with Sustainable Technology
- Pharmaceuticals and Biotech Innovations
- Chemical Manufacturing and Process Automation
- Electronics Manufacturing and IoT Integration
- Food & Beverages with Technology-Driven Production
- Mobile Manufacturing with Cutting-Edge Technology

#### 4.9.1. Services

- Jamia Mosque
- Hospital with Advanced Medical Facilities
- Central Weigh Station for Smart Logistics
- Security Office with Smart Surveillance

- Labor Club with Digital Amenities
- Ladies Club with Tech-Enabled Services
- Commercial Area with Technology-Based Retail

#### 4.9.2. Connectivity

Table 4-3 List of Areas Nearby the Project

Airport	34 KM
Railway Station	64KM
Dry Port	27KM-NLC Dry Port Lahore
Lahore City	23KM

#### 4.9. Commercial Buildings

To meet the daily requirements of the project. Some commercial and public buildings have also been proposed which include;

- Post office
- Clinics
- Banks
- Canteens
- Hotels
- General Shops

#### 4.10. Waste Water Treatment Plant and Solid Waste Management System

The proposed Technological Estate will feature a Wastewater Treatment Plant, strategically planned on the eastern side of the site, considering the slope of the project area. As for solid waste management, the design will be tailored according to the types of industries present within the estate. Two main types of waste will be generated: Technological Waste and Municipal Waste.

A centralized waste collection system will be implemented for both types of waste. For Technological Waste, the collection will be managed by a licensed contractor, following the proper legal procedures. The contractor, along with the Technological Estate management, will be responsible for ensuring the correct handling and collection of technological waste. In contrast, Municipal Waste will be collected via a door-to-door system, ensuring efficient waste removal from the estate.

The collected waste will be categorized based on its nature. Recyclable Waste will be processed for recycling, reducing the environmental impact. Non-recyclable waste will be transported to an appropriate disposal site located in the nearby vicinity of Lahore District, ensuring safe and responsible waste disposal.

#### 4.11. Fire Fighting System

The proposed Technological Estate will feature a well-equipped and **pressurized water distribution system**, designed to ensure reliable water supply throughout the estate. This system will consist of pipes, hydrants, gate valves, and other necessary infrastructure. In the event of a pressure drop within the system, typically caused by the activation of any **fire hydrant**, the system will be automatically operated to restore the pressure. This automatic operation ensures continuous water flow and enhances the overall safety and functionality of the estate.

## 5. DESCRIPTION OF THE ENVIRONMENT

### 5.1. General

The environmental baseline study is essential to establish a data set against which potential environmental impacts can be predicted and managed. The Environmental Impact Assessment (EIA) for the proposed project provides a comprehensive description of the project area, including both regional resources that are expected to be directly affected by the project and those that are not anticipated to be impacted by the project's operations.

To conduct this baseline study, a site visit was carried out to survey the field area and collect relevant data. Additionally, interviews were held with the general public and stakeholders of the project area to gather public opinions on the proposed project's implementation. The environmental impacts of any activity or process will be assessed based on how much it deviates from the baseline or normal environmental conditions.

- Physical Environment
- Ecological Environment
- Socioeconomic Environment.

### 5.2. Physical Environment

#### 5.2.1. Physical Features around the Project Area

Lahore is a city in the Pakistan province of Punjab. Lahore is the country's second-most populous city after Karachi and is one of Pakistan's wealthiest cities. Lahore is the largest city, and historic cultural centre of the Punjab region, and one of Pakistan's most socially liberal, progressive, and cosmopolitan cities. It is in the west of the Punjab province.

#### 5.2.2. Geography

The district is located between 31° 25' 0" N, 74° 20' 0" E. Lahore is bounded on the north and west by the Sheikhpura District, on the east by Wagah, and on the south by Kasur District. The Ravi River flows on the northern side of Lahore. Lahore city covers a total land area of 1,772 km<sup>2</sup> (684 sq mi) and is still growing. Under the Local Government Act of Punjab, 2013, Lahore District has been declared a Metropolitan Area and divided into nine zones which are as follows:

- Ravi Zone
- Shalimar Zone
- Aziz Bhatti Zone
- Data Gunj Bakhsh Zone
- Samanabad Zone
- Gulberg Zone
- Wahga Zone
- Allama Iqbal Zone

- **Nishtar Zone**

The location of Lahore within Punjab is shown in Figure 5-1.



Figure 5-1 Location of District Lahore

### 5.2.3. Seismic Zone

According to seismic zoning of Pakistan the project area lies in seismic zone 2A and represents minor damage. Seismic zoning map of Pakistan is given in Figure 5-2.



Figure 5-2 Seismic Zoning Map of Pakistan

The project site falls in the Punjab plain which shows low to moderate level of seismicity. The project region has also been subjected to severe shaking in the past due to earthquakes in the Himalayas. The epicenters of low to moderate magnitude earthquakes recorded in the Punjab Plain are associated with the subsurface fractures in the basement rocks which are concealed by the thick alluvial deposits. The known main active fault near Lahore is the Main Boundary Thrust (MBT) which passes at a distance of about 180 km towards northeast along the Himalayan front.

#### 5.2.4. Climate

Lahore's climate is a local steppe climate. During the year there is little rainfall. According to Köppen and Geiger, this climate is classified as BSh. The temperature here averages 24.1°C. The average annual rainfall is 607 mm. Precipitation is the lowest in November, with an average of 4 mm. Most of the precipitation here falls in July, averaging 189 mm.

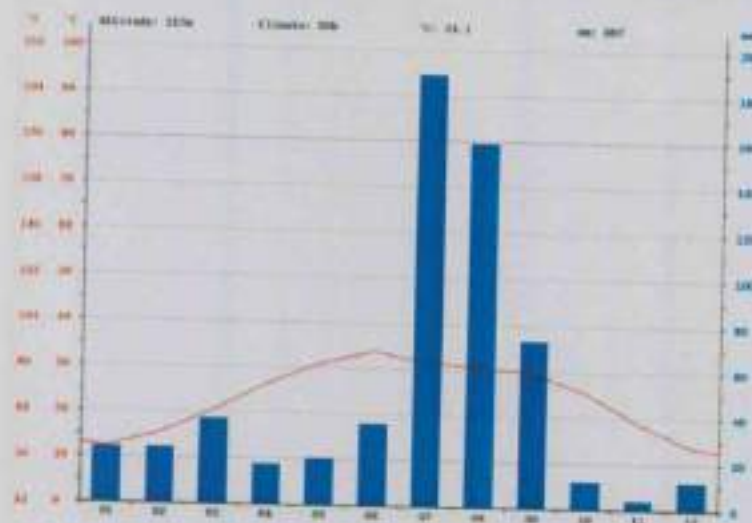
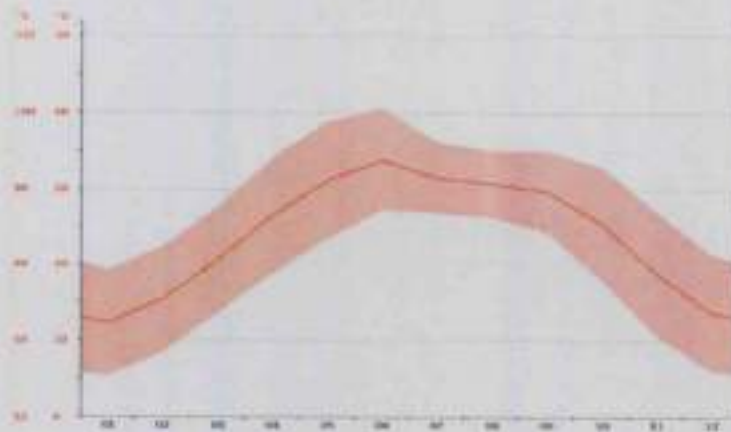


Figure 5-3 Graphical Representation of Climate

#### 5.2.5. Temperature

At an average temperature of 33.9°C, June is the hottest month of the year. January is the coldest month, with temperatures averaging 12.3°C. Between the driest and wettest months, the difference in precipitation is 185 mm. Throughout the year, temperatures vary by 21.6°C.



	January	February	March	April	May	June	July	August	September	October	November	December
Avg. Temperature (°C)	12.8	15.4	20.8	28.8	31.1	33.2	31.5	30.7	28.7	23.8	18.8	13.7
Min. Temperature (°C)	5.3	8.4	13.8	19.0	23.4	27.2	28.3	28.3	24.2	16	13.7	8
Max. Temperature (°C)	19.3	22.4	27.7	34.2	38.8	40.8	38.2	35.1	33.1	33	27.1	21.4
Avg. Temperature (°F)	54.9	59.7	69.4	83.7	88.0	91.8	88.7	87.3	83.7	74.8	65.8	56.7
Min. Temperature (°F)	41.5	47.1	56.8	66.2	74.1	81.1	82.9	83.3	75.6	61.4	54.7	46.3
Max. Temperature (°F)	66.7	72.3	81.8	93.6	101.8	105.4	100.8	95.2	91.6	91.4	80.8	70.5
Precipitation / Rainfall (mm)	24	24	37	17	30	38	104	106	73	12	4	12

Figure 5-4 Temperature Variations during Different Months

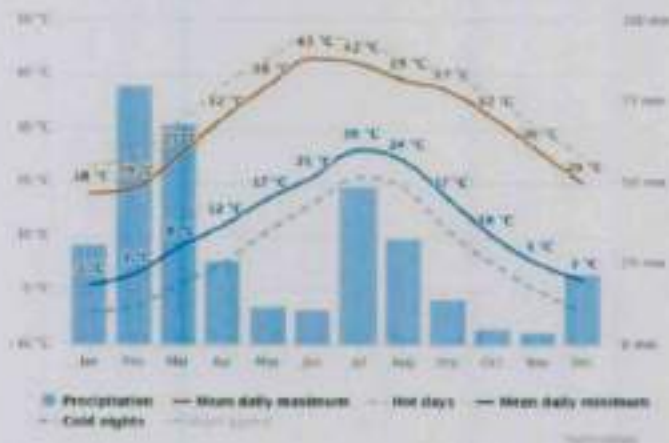


Figure 5-5 Temperature and Rainfall Data (Data Source: Metoblue)

### 5.2.6. Water Resources

Water constitutes an important section of the physical environment of an IEE Study to define its magnitude, quality and occurrence throughout the entire project corridor. Water resources of the area are discussed under two broad headings, surface water resources and groundwater resources.

#### i. Surface Water

Surface waters resources are usually exposed to the surface of earth in the form of mobile and immobile situation which includes snow-clad mountains, rivers, non-river streams, rain, sleet, wetlands and oceans. Surface resourced waters are highly susceptible to natural and anthropogenic derived contamination in terms of Chemical and Biological contamination and thus are not used for sensitive applications such as drinking directly, unless it is pre-treated. There is no surface water body found near the vicinity of the project area.

Surface water in the Study Area of the Project is present in the form of drain as Rohi Nullah is present in the north east side of the site. It mostly receives water from Technological units and nearby buildings and originates from India.

#### ii. Ground Water

Ground water resources are found hidden and camouflaged into the surface of earth in the form of mobile and immobile state and exist as shallow and deep wells, confined and un-confined aquifers, springs and watersheds. Ground resourced waters are not easily susceptible to natural and anthropogenic derived contamination caused by Chemical/Biological pollution and thus is directly used for sensitive applications such as

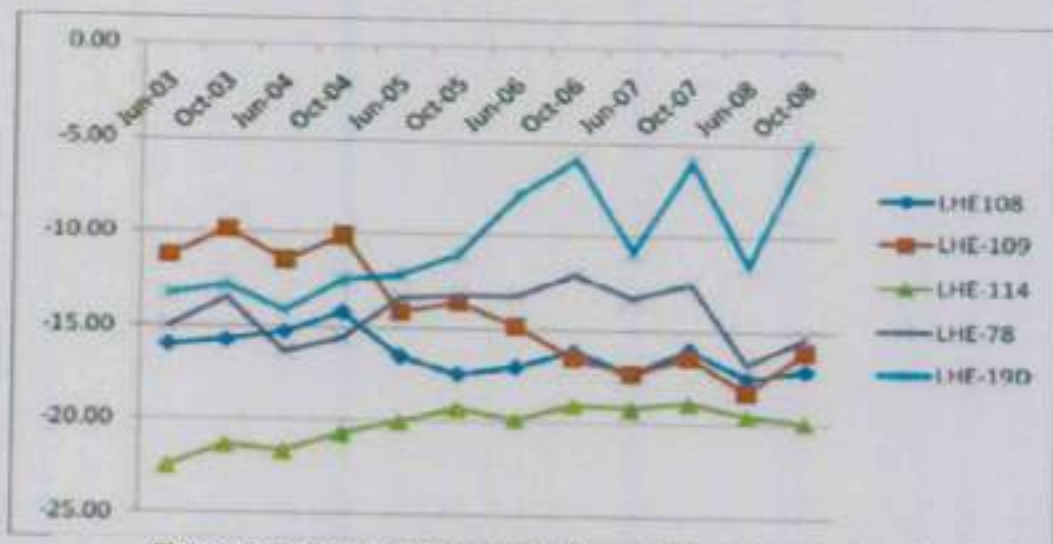


Figure 5-6 Graphical Representation of Groundwater Level Trends

drinking even it is un-treated. As per data available the water levels are generally shallow – within 20 feet as shown in Figure 5-6.

### 5.3. Ecological Environment

Ecological Environment includes:

- Flora
- Fauna
- Endangered Species

The wildlife of the Lahore District of Pakistan includes a diverse range of natural and cultivated flora and fauna. The introduced flora of the city of Lahore comes from its cultural heritage as the regional capital of various Indian kingdoms from the 11th century to the early 20th century. Much of the Indian flora was introduced during the reign of Akbar, the third Mughal emperor.

#### 5.3.1. Flora

Common trees of Lahore include:

- *Alstonia scholaris* - locally termed **ditabark** - native to South Asia
- *Bombax malabaricum*- locally termed **sunbal** or **silk cotton tree** - native to the **Himalayas**
- *Callistemon citrinus* - locally termed **bottle brush** - native to Australia
- *Dalbergia sissoo* - locally termed **shisham** - native to South Asia
- *Delonix regia* - locally termed **gulmohar** - native to Madagascar
- *Erythrina suberosa* - locally termed **coral** or **gul nister** - native to Burma
- *Ficus benghalensis* - locally termed **banyan** - native to Bangladesh
- *Ficus religiosa* - locally termed **pipal** - native to South Asia
- *Ficus retusa* - locally termed **bobari** - native to Malaysia
- *Kigelia pinnata* - locally termed **gul-e-fanoos** or **sausage** - native to Africa
- *Livistona chinensis* - locally termed **bottle palm** - native to China
- *Mangifera indica* - locally termed **aam** - native to South Asia
- *Mimusops elengi* - locally termed **molseri** - native to South Asia
- *Pongamia pinnata* - locally termed **such chayn** or **Indian beech** - native to Himalayas
- *Syzygium cumini* - locally termed **jamu** - native to South Asia
- *Ziziphus zizyphus* - locally termed **jujube** - native to Himalayas

#### 5.3.2. Fauna

The Changa Manga forest near Lahore is a hotspot for wildlife in Punjab. Wildlife within the borders of the plantation includes small remnant populations of nilgai, hog deer, wild

boar and possibly axis deer. Jackal and Asiatic wild cat can be found there as well. It also serves as a wildlife breeding center. Changa Manga plantation is an important place for restocking projects of Asiatic vultures in Pakistan. A *Gyps Vulture Restoration Program* was started in 2006 by WWF-Pakistan to conserve and breed endangered species of *Gyps*, especially the white-rumped vulture.

### 5.3.3. Endangered Species

There are no floral or faunal species inhabiting in the project area that are included in RED Data Book of IUCN.

## 5.4. Socioeconomic Environment

Socio-economic and other relevant information revealed from Multiple Indicator Cluster Survey (MICS) 2007-08. One of the main objectives of Multiple Indicator Cluster Survey (MICS) was to establish credible baseline for socio-economic status at each District and Tehsil Level.

Table 5-1 Summary of Socio-Economic Indicators

Socio-economic Indicators	District Lahore
Number of Households	7,755
Number of Under-5 Children	615
Solid Fuel Used	16.2%
Improved Source of Drinking Water	98.6%
Water Treatment Used in the Household	24.3%
Percentage of Population Using Sanitary Means of Excreta Disposal.	95.4%
Proper Disposal of Solid Waste	56.9%
Literacy Rate	74.1%
Percentage of Children for Primary School Entry	25.4%
Total Child Labor	3.3%
Had cough for more than Last Three Weeks	1.6%
Diagnosed with Tuberculosis during Last One Year	0.4%
Diagnosed with Hepatitis during Last One Year	1.2%
Employed	93.6%
Unemployed and Seeking Job	6.4%
Household Utilities	
Electricity	99.6%
Gas	79.7%
Radio	56.3%
TV	90.9%

Cable TV	69.2%
Telephone	36.3%
Mobile	87.2%
<b>Socio-economic Development</b>	
Livestock	11.7%
Population	11126285 persons
Average Annual Growth Rate (1998-2017)	3.00
Mean Household Size	6.4
Govt. Hospitals	14.8%

## 5.5. Quality of Life Values

### 5.5.1. Religious, Ethnic Groups and Languages

Of the people in Lahore, 87% of them speak Punjabi; however, this language can be broken down into many different dialects which make for a diverse speaking population. Other languages spoken include Urdu—the national language, English—which is spoken and understood by a large number of people; especially those from an educated background.

The main religions in Lahore are Muslim—mostly Sunni or Shia- which makes up 94% of the population. The remaining 6% are nearly all Christians. There are also a small number of minority religions such as Sikh and Hindu. The Lahoris are a cultural bunch of people celebrating many festivals around in the year—some religious, some historical and some are combinations of ancient and modern even western celebrations.

### 5.5.2. Social Infrastructure and Facilities

Overall the social and physical infrastructure is up to the mark in the project area. A brief account of the education, health, infrastructure and markets of the area is as follows:

### 5.5.3. Educational Institutions

There are a number of educational institutions found in Lahore. The educational status is up to the mark in the district. A list of some of the educational institutions is given below.

- Grand Charter School
- St. Anthony's High School
- Government College of Science
- Forman Christian College
- University of Engineering and Technology, Lahore
- COMSATS Institute of Information Technology

#### 5.5.4. Health Facilities

There are different Basic Health Units (BHUs), Rural Health Centers (RHCs), Tehsil Headquarter Hospitals (THQs) and District Headquarter Hospitals (DHQs) in the district. List of some of them have been given below.

- DHQ Govt M.M.Munshi Hospital, Lahore
- DHQ Govt Kot Kawaja Saeed Hospital, Lahore
- BHU Manawan
- BHU Narwar
- RHC Raiwind
- RHC Manga Mandi
- THQ Govt. Mozang Hospital, Lahore
- THQ Govt Said Mitha Hospital, Lahore

The total number of health facilities in the district is given in Table 5-2.

**Table 5-2 Health Facilities in Lahore**

Sr. No.	Hospitals	Number
1	DHQ Hospitals	01
2	THQ Hospitals	03
3	RHCs	05
4	BHUs	40
5	Govt. Rural Dispensaries	25
6	MCH Centre	02
7	Sub Health Center	13
<b>Total</b>		<b>89</b>

#### 5.5.6. Economy of the Area

Lahore, a dynamic hub of economic and technological growth, continues to play a pivotal role in Pakistan's development. As of 2008, its GDP by purchasing power parity (PPP) stood at \$40 billion, with an impressive projected growth rate of 5.6%. This growth puts Lahore on par with Karachi, despite having only half the population. Lahore's economy represents 51% of Karachi's size (\$78 billion in 2008), contributing 11.5% to the national economy and 19% to the provincial economy of Punjab. With Punjab's overall economy valued at \$115 billion, Lahore remains the most significant subdivision in Pakistan to exceed a \$100 billion economy, ranked 144th globally.

The city's GDP is projected to rise to \$102 billion by 2025, maintaining a steady growth rate of 5.6% per annum. Lahore has evolved into a major technological agglomeration, housing around 9,000 technology-based units. In recent decades, the city has shifted from a manufacturing-based economy to one driven by services. A substantial 42% of Lahore's workforce is employed in sectors such as finance, banking, real estate, and community

services. Additionally, Lahore is home to Pakistan's largest software and hardware production hub, alongside a rapidly growing computer-assembly industry.

Lahore continues to lead as the literary, educational, and cultural center of Pakistan, with 80% of the nation's books published in the city. The Lahore Expo Centre, inaugurated in 2010, remains one of the city's largest projects, reflecting its importance as a business and cultural nexus. The ongoing development of the Defense Raya Golf Resort, which will be Pakistan's largest golf course, further cements Lahore's role as a prominent hub for international tourism and leisure.

These developments highlight Lahore's thriving economy, its central role in Pakistan's technological and service sector growth, and its position as a cultural and business leader in the region.. The rapid development of large projects such as these in the city is expected to boost the economy of the country. Ferozpur Road of the Central business districts of Lahore contains high-rises and skyscrapers including Kayre International Hotel and Arfa Software Technology Park. Here are some of pictures that can show the economy of Lahore.



*Figure 5-7 Pictorial View of Economy of Lahore*

#### **5.5.7. Agriculture**

**Main Crops:** Wheat, Rice, Maize, Millet and Barley.

**Main Fruits:** Citrus, Mango, Guava, Date Palm and Jamun.

**Main Vegetables:** Garlic, Onion, Radish, Potato, Carrot, Spinach and Cauliflower.

### 5.5.8. Livestock

The major livestock includes Mules, Horses, Donkeys, Camels, Bullocks, Buffaloes and Cows. The statistics of these animals are given in Table 5-3.

**Table 5-3: Statistics of Livestock in Lahore**

Livestock	Number
Mules	4207
Horses	8599
Donkeys	71364
Camels	112
Bullocks	40069
Buffaloes	3067
Cows	458
<b>Total</b>	<b>127876</b>

### 5.5.9. Archeological and Cultural Sites

Lahore is famous as being the cultural center of Pakistan, every nook and corner of Lahore has a rich history and cultural importance. However following historic sites and buildings are must if one visits Lahore.

- Badshahi Masjid
- Lahore Fort (Sheesh Mahal, or Palace of Mirrors)
- Azeri Bagh
- Mausoleum of Muhammad Iqbal
- Data Sahib (Data Darbar)
- Shahi Mohalla
- Mina-e-Pakistan
- Anarkali
- Chauburji
- Lahore Museum
- Gawal Mandi
- Ichhra
- Shalimar Gardens
- Shahdara
- Shimla Pahari

However, there were no archaeological sites near the project area although nearest chaks do have mosques, graveyards and darbars.

## 5.6. Environmental Baseline Monitoring

To assess the baseline conditions of the project area, following environmental components were monitored:

- Ambient Air Quality
- Drinking Water Quality
- Noise Levels

The lab reports of environmental analysis of the above mentioned parameters are attached in **Appendix VII**.

## 5.7. Suitability of the Site

The site does not fall in environmental sensitive area and all commodities are at a suitable distance from project site as they will not have impacted by the establishment activities even locals will get more benefits and job opportunities. No replacement, relocation and rehabilitation are required for the development of proposed project.

## **6. ENVIRONMENTAL IMPACTS ASSESSMENT**

This section provides the analysis of the potential impacts during different stages of the proposed project on the physical, biological and socio-economic environment of the project area.

### **6.1. What is the Problem?**

The environmental impacts resulting from the development of the Technological Estate in District Lahore are a critical concern as they can affect various environmental settings. The project, designed to enhance technological infrastructure, will have consequences on physical, ecological, and socio-economic environments. These impacts must be carefully assessed and managed to ensure that the development does not negatively affect the surrounding environment and communities.

### **6.2. When Problem Will Occur and When It Should Be Addressed?**

The environmental impacts of the Technological Estate development should be managed and mitigated at every stage of the project, from installation to the operational phase. Different stages of the project can have varying impacts on the environment, and it is essential to address these impacts at each phase to ensure sustainability and minimize negative effects on the surrounding ecosystem.

### **6.3. Where Problem should be addressed?**

To address the environmental impacts resulting from the project location where the Technological Estate activities are being carried out, it is essential to identify and manage the potential environmental concerns specific to the site. These impacts should be effectively mitigated at the project location to minimize negative effects on the surrounding environment and communities. The following steps outline the necessary actions to manage the environmental impacts based on the project location:

### **6.4. How the Problem should be addressed?**

The problem should be addressed using specified criteria and methods as specified in Guidelines/Checklist. The impacts should be addressed using one or more methods as specified in the Checklist provided by EPA, Punjab.

### **6.5. Ways of Achieving Mitigation Measures**

#### **6.5.1. Changing in Planning and Design**

The mitigation measures as specified in the EIA Report will be achieved by the implementation of Environmental Management and Monitoring Plan. Any significant changing in planning and design or EMMP will be made based on requirements in future. It may be communicated to EPA, Punjab in case of significant changes.

### **6.5.2. Improved Monitoring and Management Practices**

Improved monitoring and management practices will be adopted to ensure the implementation of mitigation measures as suggested in the EIA Report. Improved monitoring and management practices may include the followings:

- Monitoring of all management measures as suggested in EMMP.
- Monitoring of Environmental parameters as suggested by EPA, Punjab.
- Monitoring of worker's health and safety.
- Monitoring of implementation of potential environmental enhancement measures.

### **6.5.3. Compensation in Money Terms**

Compensation in terms of money is only required in case of any relocation or replacement of community/settlement due to project activities.

## **6.6. Impacts on Physical Environment**

This section provides the potential adverse impacts of the proposed Project on physical environmental resources of the area (land, water and air), the notable impacts discussed below.

### **6.6.1. Impacts on Land Resources**

The proposed Technological Estate project is designed to address various environmental impacts related to land use, soil erosion, and contamination while integrating modern technologies for mitigation. This section outlines the anticipated effects and presents a comprehensive technological approach to minimize these impacts at different stages of the project, including planning, construction, and operation. By leveraging advanced technological tools, the project aims to create a sustainable and environmentally friendly industrial development.

### **6.6.2. Land Productivity and Use**

Following are the major impact on land productivity and use.

- Most significant impact will be the conversion of some agricultural land into Technological land. It is worth to mention here that land in the project area is Technological as per the map of LDA.
- Due to proposed project construction and operation, other Technological activities may start in the vicinity of area, where at present there is no such type of activity. This may cause negative impact on the existing environment;
- Borrow pits and other landscape depressions if left open, may prove hazardous to human beings, livestock and wildlife;

- Open pits containing water are potential sources of mosquito breeding if left stagnant, and can create health problems;
- Surface run-off from the impervious surface of the proposed carriageway can further aggravate the flooding of embankment sides during the operation stage;
- Induction of infrastructural development works may change the local drainage pattern of the area. This can cause ponding in the vicinity of the project area in rainy season, which ultimately affect the current use of land patterns.

Construction activity may cause dust and smoke emission may be injurious to the residents of adjacent settlements

### **6.6.3. Soil Erosion and Land Sliding**

Soil erosion may occur in the workshop areas as a result of improper runoff drawn from the equipment washing-yards and improper management of construction activities. Due to development of proposed area. Velocity of runoff will be increased which will ultimately enhance the soil erosion.

Once the proposed and existing roads (after rehabilitation) return to normal operation, they will naturally experience depreciation over time due to various environmental factors, including soil erosion. The high embankments, which are vital for maintaining road stability and preventing flooding, will be particularly susceptible to erosion. This erosion can be exacerbated by weather conditions such as heavy rainfall or strong winds, leading to the gradual degradation of the road's structural integrity.

### **6.6.4. Soil Contamination**

Soil project area may get contaminated due to the following reasons

- A farce quantity of solid waste will be generated by the Project during construction stage. If this solid waste was not properly disposed of, it will contaminate the soil resources especially during monsoon season.
- Some chemicals used in laying of water supply pipe joints, sheathing on electric wires and cables are hazardous and toxic in nature. All the carbon based compounds are toxic to varying degrees. Hydrocarbon group of chemicals are toxic and fuel, petrol, diesel and all the lubricants are too toxic in nature. In case proper care is not taken for handling, storing and transportation of these toxic substances may cause damage to the health of the workers as well as their spills will contaminate the soil.

### **6.6.5. Mitigation Measures**

The mitigation measures, which will be carried out in design stage, construction as operation stages for land resources are as under:

#### 6.6.6. Land Productivity and Use

The following practices will be adopted to minimize the damages to land productivity and use:

- The damage to land resulting from the implementation of the project is anticipated to be a permanent loss. However, the economic benefits generated by the project, including increased local income and job opportunities, are expected to offset this loss by improving agricultural productivity in the surrounding areas. With more resources available, the yield from adjoining agricultural land is likely to increase, compensating for the land lost to the project.
- To manage the expected technological growth around the estate, proper regulation is essential. Legislation must be introduced and enforced to prevent uncontrolled expansion and to ensure sustainable development within the technological zone. The use of technology can facilitate monitoring and enforcement of zoning laws through the integration of geographic information systems (GIS) and remote sensing tools, ensuring that any expansion of technological infrastructure is orderly and does not exceed planned limits.
- Wherever possible, waste land or natural areas with higher elevations will be utilized for material extraction and setting up project facilities. This approach minimizes the impact on productive agricultural lands. In cases where adjacent agricultural land must be used for borrow material, the top 30 cm of the plough layer will be carefully stripped and stockpiled. This topsoil will later be returned to the land to restore its fertility after the required borrow material has been extracted, ensuring minimal long-term damage to the land.
- Excavation for earth fill will be limited to a depth of approximately 50 cm, a practice that will be applied uniformly across the acquired farmland. This measure minimizes soil disturbance, preserving the soil's structure and its ability to support vegetation after the project is completed. In areas where deeper excavation is necessary, the top layer of soil will be stripped, stockpiled, and reused after the excavation, which will help restore the land to its original state.
- To ensure that the project does not harm the environment, any excavation areas or borrow pits that cannot be fully rehabilitated will be converted into fishponds or landscaped to minimize erosion. This approach not only prevents erosion but also creates potential wildlife habitats, contributing to the ecological sustainability of the project area. By using technology such as drone surveys and geospatial monitoring, the rehabilitation process can be effectively managed and documented, ensuring compliance with environmental standards.
- The project's design has been aligned with the natural drainage patterns of the area to avoid disruption to local hydrology. Side drains will be strategically constructed to prevent flooding on the carriageways, ensuring the effective management of stormwater. In areas with development, side drains will be

installed along the roadways, while in open areas, drains will be constructed along the embankments. The use of real-time data and automated drainage systems can improve the efficiency of stormwater management, preventing flooding and ensuring the stability of the infrastructure.

- To avoid disturbing the natural slope of the land during construction, all materials will be stored in designated areas, and contractors will be responsible for the proper management of leftover materials. Prior to the commencement of work, contractors will be required to submit a site restoration plan, which will be reviewed for feasibility and effectiveness. The use of environmental monitoring software can track the progress of site restoration efforts and ensure that the land is returned to its original condition after construction is completed.
- By integrating modern technologies such as GIS, remote sensing, and real-time environmental monitoring, the project will be able to mitigate negative impacts on the land and surrounding ecosystems, while maximizing the benefits of technological advancements for the local community.

#### **6.6.7. Soil Erosion and Land Sliding**

- Good engineering practices will help control soil erosion both at construction sites and in peripheral areas, particularly in borrow areas and along transportation tracks. These will include the following measures:
- Low road embankments will be protected from erosion by planting indigenous grasses and low height trees that can flourish under project site conditions

### **6.7. Impacts on Biological Environment**

The biological environment mainly includes flora and fauna. Impact on flora and fauna and corresponding mitigation measures are described in the following paragraphs;

#### **6.7.1. Impacts on Flora**

Following impacts will be on the flora of the area;

#### **6.7.2. Trees to be planted**

There is no proper tree growth at the project site as the area is water logged. However, some subsistence farming and self-grown dwarfed trees are there on the edges. Cutting of these trees will not have any significance impact. The proponent will plant 25000 trees to be grown at the project site and 15% of the scheme will be kept green which include parks and green corridors. These trees will be planted in green corridors to act as buffers along roads. As these scattered trees are small in number, their replacement will be made good by planting new trees on both sides of the main, lateral and minor roads.

Keeping in view the saline and water logged conditions in the project area a number of trees might be planted as a part of the project on the boundary of Technological estate.

Saline areas, which are lying unutilized by the communities, could be rehabilitated following proper soil amendments, preparation and choice of suitable species.

Trees showing successful growth include the following

- Shesham
- Eucalyptus
- Guava

Main species proposed in the project area:

- *Conocarpus erectus* (buttonwood),
- *Dalbergia sissoo* (shisham),
- *Tamarix aphylla* (Athel tree),
- *Morus alba* (Mulberry),

To facilitate the widening and expansion of plantation there will be need of growing more trees at the boundary of project site along the sides of pedestrian corridors inside the parks of three different community cores. For each tree to be cut, two trees to be planted to conserve the biodiversity.

The selected area has scattered shrubs and no significant impacts are envisaged dur, to removal of shrubs.

#### **6.7.3. Impacts on Fauna**

Following are the specific classes of fauna which are expected to be affected due to the project implementation.

#### **6.7.4. Mammals and Reptiles**

During the construction phase, there will be negative impacts on the mammals and reptiles of the area. Mammals, such as squirrel, jackal etc. will avoid these areas for fear of being hunted. Same will be the case with reptiles; some reptiles might be killed during the digging and dragging operations.

#### **6.7.5. Birds**

Birds will try to find shelter and food somewhere else and will tend to move away from the Project site for fear of being hunted/trapped.

#### **6.7.6. Mitigation Measures**

The following mitigation measures will be adopted to alleviate the adverse impacts on the vegetation growth of the area.

- A tree plantation program will be incorporated into the detailed design not only

to compensate the loss of trees but also to enhance the aesthetic view as well as to reduce the air and noise problems.

- Existing access tracks will be used for borrow of construction material and new paths will be constructed only in case when no existing path is available to avoid damage to the existing trees and bushes.
- While making paths for carriage of construction materials to the site care will be taken that minimum land is utilized and minimum area is disturbed. Cutting of trees should be avoided by making diversions.
- The camps and workshop facilities will be established on barren land; however, if such type of land is not available, it will be ensured that minimum clearing of the vegetation occurs and minimum damage to trees and undergrowth is ensured.
- The Contractor's staff and labour will be strictly directed not to damage any vegetation such as trees or bushes in the nearby areas.
- Contractor will provide the fuel wood/gas cylinders at the camps for cooking purposes and cutting the trees/bushes for fuel will not be allowed.

The following mitigation measures will be adopted to reduce the impacts of project and protect fauna.

#### **6.7.7. Mammals and Reptiles**

Mammals and reptiles will be protected by following practices:

- Hunting and harassing of wild animals shall be strictly prohibited and Contractors will warn their labor.
- Lights used in the camps, during construction activities will be kept to the minimum requirement. In the wildlife sensitive areas, upward scattering lights will preferably be used.
- Vehicle speed will be controlled to avoid incidental mortality of small mammals and reptiles.
- Periphery of the camps will be fenced and gated to check the entrance of the wildlife into the construction camps. Camp wastes harmful to wildlife should be properly disposed of/dumped.

#### **6.7.8. Impacts on socioeconomic and cultural Environment**

The section describes the impact of the proposed project on local communities, construction workers, indigenous and vulnerable people as well as on structures or sites of cultural and religious significance.

### **6.7.9. Impacts on Local Communities/ Workforce**

The area surrounding communities will be affected during the construction and operation phases as follows:

- During the construction phase the general mobility of the local residents and their livestock in and around the project area is likely to be hindered.
- Community will have to face the noise and dust problems during the construction phase and air and noise omissions during operation stage.
- Induction of outside workers in the Contractor labor may cause cultural issues with the local community.

### **6.7.10. Generation of income**

Local people will find business activities due to Implementation of the Project particularly persons settled in the vicinity of project area, Approximately hundreds of thousands Jobs will be generated by the implementation of project which subsequently enhance the living standards of community.

### **6.7.11. Gender Issues**

The Induction of outside labor may create social and gender issues due to the unawareness by them of local customs and norms. It will also cause hindrance to the mobility of local women.

### **6.7.12. Indigenous, Vulnerable and Women Headed Households**

During the social field survey of the project, no Indigenous group of people was identified. So, no impact on the Indigenous people is envisaged due to the implementation of the project.

Income of vulnerable people i.e. squatters settled on Government land may be affected due to the implementation of the Project, like relocation of their infrastructure, loss of land, crops, trees, etc. The owners of the affected structures identified during the field visits are also falling below the poverty line. No women headed household was identified during the social survey of the Project.

### **6.7.13. Mitigation Measures**

- The project will prioritize the recruitment of individuals from the communities affected by the STZ, ensuring that local people are given preference for employment during both the construction and operation phases. A recruitment plan will be developed, and non-skilled labor will be sourced from the local population as much as possible, using advanced recruitment platforms to streamline the process. All workers, regardless of their origin, will be

accommodated within a tech-enabled camp located on the STZ, ensuring efficient management and integration of the workforce.

- The local recruitment commitment will be clearly defined and extended to the employees of contractors involved in the project, with a focus on recruiting from areas closest to the STZ. This policy will be supported by specific procedures and quantified targets, using digital tracking systems to monitor and evaluate local recruitment efforts throughout the project lifecycle.
- Special attention will be given to the employment of women and senior citizens, promoting job opportunities for these groups through targeted online campaigns and platforms where feasible and culturally appropriate. This will help reduce potential social and demographic impacts, particularly for marginalized sectors of the host communities. The project will actively engage with vulnerable individuals, offering them job opportunities, donations, and scholarships through a digital portal, improving their access to essential resources.
- Through its Corporate Social Responsibility (CSR) activities, the project will continue to monitor and support vulnerable groups in the surrounding communities. This will include regular assessments of their socioeconomic status and targeted support through various initiatives, managed through technology-enabled platforms. A grievance redress mechanism will be designed specifically to address the concerns of vulnerable people, using an online reporting system and a dedicated liaison officer responsible for assisting them and resolving their complaints.
- Feedback consultations will be held regularly with vulnerable community members to evaluate the effectiveness of the grievance redress system. Their feedback will be collected digitally and any necessary improvements will be made to ensure that their concerns are addressed promptly and satisfactorily.
- To foster a positive and respectful working environment, the project's labor force will undergo cultural and social sensitivity training through a digital learning platform. This will ensure that workers, particularly those from other parts of the country or abroad, understand and respect the local cultural and social values of the STZ community. This approach will promote harmony between the workforce and the local population, mitigating any potential social conflicts.

## 6.8. Methodology for Impacts Identification

Environmental sensitivity of the project area is described through a thorough review of the project activities and the evaluation of significance of impacts is carried out through Environmental Checklists and GIS and computer expert system. In checklists, the impacts have been given magnitude based on their severity. A detailed map of the project area is developed on GIS to study the impacts on nearby environmental settings. This chapter then suggests effective mitigation strategies to help combat the adverse nature of these impacts and delivers a monitoring scheme to manage them.

### 6.9. Impacts Analysis and Prediction

The impacts on different environmental settings were analyzed by conducting different consultation sessions with environmental experts and individuals. Their views were recorded and incorporated in the report. The list of stakeholders and individuals consulted will be provided in the chapter of Stakeholder's Consultation.

### 6.10. Characterization of Impacts

Impacts were characterized based on the following parameters:

- |           |                    |
|-----------|--------------------|
| Nature    | Duration           |
| Magnitude | Spatial Boundaries |
| Extent    | Reversibility      |

The impacts characterization has been given in Table 6-1.

**Table 6-1 Characterization of Impacts**

Environmental Component	Impacts		Nature of Impact		Duration			Spatial Boundaries			Likelihood			Reversibility	
	Positive	Negative	Direct	Indirect	Short Term	Intermediate	Long term	Local	National	Global	Low	Moderate	High	Reversible	Irreversible
Water Resources	Nil														
Land Resources															
Air Quality															
Noise															
Solid waste															
Wastewater	Nil														
Flora & Fauna															
Community Amenity															
Afforestation															
Local Economy, Community Development and Employment															
Resettlement	Nil														
Health & Safety															

### 6.11. Impact's Significance

After the evaluation of all the potential impacts, the impacts significance is to be given using Impact matrix. The impacts significance of Physical importance, Ecological importance, Social importance is given using the matrix approach. The impacts significance is given based on the characterization of impacts. From the Table 6-2 which is showing the characterization of each impact, the following significance is given to each physical, biological and socio-economic impact.

**Table 6-2 Significance of Environmental Impacts**

Environmental Parameter	Significance
Water Resources	None
Land Resources	None
Air Quality	Require mitigation
Noise	Require mitigation
Solid waste	Require mitigation
Wastewater	None
Flora & Fauna	Acceptable
Community Amenity	Acceptable
Afforestation	Acceptable
Local Economy, Community Development and Employment	Acceptable
Health & Safety	Require mitigation

## **7. SCREENING OF POTENTIAL ENVIRONMENTAL IMPACTS & MITIGATION MEASURES**

### **7.1. Project location**

The project would pose aesthetic and noise impacts on the nearby areas. Dust would however have impacts on the areas bit far away. There is no water body found near the vicinity of the project site. Hence, there will be no impact on water quality due to project activities. The mitigation measures for dust and noise problems are discussed below.

### **7.2. Mitigation Measures**

Following are the steps that may be adopted to control noise and dust problems at site.

- Use of PPEs (noise suppression equipment-ear mufflers etc.) will be ensured by the workers where noise levels are higher than 85 (dBA).
- Project activities will be ensured at daytime when background noise levels are high.
- Vehicles speed limit will be maintained to avoid excessive vibrations.
- Regular maintenance of machinery will be ensured.
- Controlled water sprinkling will be ensured to reduce dust/PM<sub>10</sub>.
- Maintain appropriate buffers between the site and receptors if practical.
- Use of PPEs (face masks etc.) will be ensured by the workers and staff.

### **7.3. Anticipated Environmental Impacts Related to Project Design**

The project may have high blowing off rates and dust emissions. Better design can resist such impacts. Thus, barriers shall be developed by extensive vegetation and trees on the boundaries of the project.

### **7.4. Environmental Impacts during Installation Stage**

The summary of the positive and the negative impacts observed on the environment by the cement production on the project area has been summarized in Table 7-1. The impacts have been given magnitude based on the scaling given below.

<b>Scale Range</b>	<b>0 to 5</b>
Major Impact	5
Moderate	4
Intermediate	3
Minor	2
Low	1
No Impact	0

(+) sign is used for positive impacts and (-) sign for negative impacts. The mitigation measures will be explained after a short while.

**Table 7-1 Identification of Impacts during Installation Stage of the Project**

Sr. No.	Component	Environmental Issue	Impacts	
			Positive	Negative
1	<b>Physical Environment</b>			
	Water	Channel Water Quality		0
		Channel Water Discharge.		0
		Groundwater Quality		0
		Groundwater Level		0
		Surface Run-Off		0
		Flooding		0
		Drainage		0
	Land	Soil Salinity		0
		Soil Erosion		0
		Land Utility / Productivity	+3	
	Solid Waste	Land Pollution Breeding of flies and rodents Odor		0
		Climate	Micro-climate changes.	
	Atmosphere	Dust		-3
Noise			-2	
		<b>Sub-Total</b>	<b>+3</b>	<b>-5</b>
2	<b>Biological Environment</b>			
	Flora	Forests /Trees	+2	
		Other Terrestrial Vegetation		0
	Fauna	Mammal Communities /Habitat		0
		Reptile Communities /Habitat		0
		<b>Sub-Total</b>	<b>+2</b>	<b>0</b>
3	<b>Socio-economic Environment</b>			
	Social	Population	+1	
		Land Ownership	+1	
		Land Lease	+2	
Worker's Health and Safety			-2	

		Security		0
		Social Cohesion/ Attitude	+1	
		Food/ Nutrition	+1	
		Health		0
		Education	+1	
	Economic	Income Levels	+1	
		Employment	+2	
		Land Value	+2	
	Institutional	Institutional Activities/Effectiveness	+2	
	Human Use	Cultivation	+1	
		Livestock	+1	
		Afforestation	+2	
		Infrastructure		0
		Domestic Water Supply		0
		Community Development	+2	
	Resettlement	Land		0
		Dislocation of Population		0
		Loss of Property		0
		Loss of Infrastructure		0
		Resettlement of Affected		0
<b>Sub-Total</b>			<b>+20</b>	<b>-3</b>
<b>Grand Total</b>			<b>+25</b>	<b>-7</b>

The potential environmental impacts resulting during installation phase of the project and their possible mitigation measures are given in Table 7-2.

**Table 7-2 Environmental and Social Impacts of the Proposed Project**

Subject Area	Potential Impacts During Construction	Potential Impacts During Operation	Mitigation
<p><b>Physical Environment</b></p>	<p><b>Air Quality</b></p> <ul style="list-style-type: none"> <li>• Dust from construction activities.</li> <li>• Traffic-related air quality impacts.</li> </ul>	<ul style="list-style-type: none"> <li>• Effects of stacks emissions on ambient air quality.</li> <li>• Traffic-related air quality impacts.</li> <li>• Green House Gas emissions</li> </ul>	<ul style="list-style-type: none"> <li>• To minimize environmental and air quality impacts within the STZ, smart environmental monitoring systems and digital protocols will be integrated to manage dust and emissions. IoT-based dust sensors will guide the automatic watering of material stockpiles, access roads, and exposed soils, especially during high-risk periods such as strong winds. The frequency and intensity of watering will be adjusted in real-time based on environmental data analytics.</li> <li>• Stored construction materials such as gravel and sand will be confined and covered using automated retractable covers to reduce dust dispersion. Vehicles operating within the STZ will be equipped with modern, low-emission exhaust systems, and their maintenance schedules will be monitored through fleet management software to ensure compliance with environmental standards.</li> <li>• AI-powered surveillance will help enforce strict vehicle speed limits on site, minimizing dust generation during transport activities. All haulage vehicles transporting dust-prone materials like cement or borrow will be covered using smart tarpaulin systems and guided via GPS-mapped haulage routes. These</li> </ul>

				<ul style="list-style-type: none"> <li>• routes will be selected based on data analysis to ensure optimal paths with minimal community disruption.</li> <li>• Furthermore, autonomous alerts and geofencing technologies will be used to monitor vehicle movements, reduce idling times, and control dust emissions across the STZ, supporting a clean, technologically advanced industrial environment.</li> </ul>
		<ul style="list-style-type: none"> <li>• Water requirements for operation</li> <li>• Discharge of process and wastewater.</li> </ul>	<ul style="list-style-type: none"> <li>• Stockpiles of potential water pollutants (i.e. oils, construction materials, fuel, etc.) shall be placed so as to minimize the potential of contaminants to enter local watercourses or storm-water drainage.</li> </ul>	
<b>Water Resources</b>	<ul style="list-style-type: none"> <li>• Control and management of site drainage.</li> <li>• Wastewater discharge, Sewage disposal and foul drainage</li> <li>• Effects on groundwater quality.</li> </ul>	<ul style="list-style-type: none"> <li>• Operation of drainage systems on site.</li> <li>• Discharge of storm water, sewage and drainage</li> </ul>	<ul style="list-style-type: none"> <li>• Preparation of Emergency Spills Contingency Plan.</li> <li>• Storm-water runoff from all fuel and oil storage areas, workshop, and vehicle parking areas is to be directed into an oil and water separator before being discharged to any watercourse</li> </ul>	
<b>Soils, Geology and Topography</b>	<ul style="list-style-type: none"> <li>• Effects on soils and topographic features.</li> <li>• Soil contamination</li> </ul>	<ul style="list-style-type: none"> <li>• Soil contamination during construction phase</li> </ul>	<ul style="list-style-type: none"> <li>• Ensure the topography of the final surface of all raised lands are favorable to enhance natural draining of rainwater / flood water</li> <li>• Restore the natural landscape of the construction sites after completion of work</li> </ul>	

Ecological Environment	Land Use, Landscape and Visual Issues	<ul style="list-style-type: none"> <li>Impacts on existing land use on site.</li> <li>Impacts on existing land use in the surrounding area.</li> <li>Effects of construction activities on landscape character.</li> <li>Visual impact of construction activities.</li> </ul>	<ul style="list-style-type: none"> <li>Impacts on existing land use on site.</li> <li>Impacts on existing land use in the surrounding area.</li> <li>Effects on landscape character.</li> <li>Visual impact of operating facilities.</li> </ul>	<ul style="list-style-type: none"> <li>Stop work and inform the site manager immediately if, during construction, an archaeological or burial site is discovered.</li> <li>It is an offence to restart work in the vicinity of the site until approval to continue is awarded by the plant management.</li> <li>Resolve landscape change issue in consultation with local leaders and supervision consultants.</li> </ul>
	Flora	Loss of natural vegetation and crops	<ul style="list-style-type: none"> <li>Impacts on flora due to altered drainage and runoff patterns</li> </ul>	<ul style="list-style-type: none"> <li>Removal of trees should be limited to the development footprint</li> <li>Construction activities shall reduce the loss or disturbance of vegetation</li> <li>Use clear areas to avoid cutting of trees</li> <li>A procedure shall be prepared to manage vegetation removal, clearance and reuse</li> <li>Inform the plant management before clearing trees</li> </ul>
	Fauna	<ul style="list-style-type: none"> <li>Losses of habitat or species due to land take.</li> <li>Disturbance or damage to adjacent habitat of species</li> </ul>	<ul style="list-style-type: none"> <li>Disturbance or damage to adjacent habitat</li> <li>Effects on birds migration routes</li> </ul>	<ul style="list-style-type: none"> <li>Project should ensure the safety of various animals at construction and operation camp area.</li> </ul>

<p><b>Economy Related Impacts</b></p>	<ul style="list-style-type: none"> <li>• Impacts on local skilled and un-skilled labor and businesses.</li> </ul>	<ul style="list-style-type: none"> <li>• Impacts on local labor and businesses</li> </ul>	<ul style="list-style-type: none"> <li>• The increased government revenue could be used to meet objective by improving infrastructure and services in areas local to the project.</li> </ul>
<p><b>Social Settings and Services Related Impacts</b></p>	<ul style="list-style-type: none"> <li>• Demographic changes due to influx of people.</li> <li>• Pressure on existing infrastructure, utilities and services.</li> </ul>	<ul style="list-style-type: none"> <li>• Small scale demographic and cultural changes.</li> </ul>	<ul style="list-style-type: none"> <li>• Safe, reliable water supply, Sufficient housing for all.</li> <li>• Treatment facilities for sewerage of toilet and domestic wastes</li> <li>• In-house-community entertainment facilities.</li> </ul>
<p><b>Public Health Related Impacts</b></p>	<ul style="list-style-type: none"> <li>• Traffic congestions and disruption to road users</li> <li>• Health impacts due to construction related dust and</li> <li>• air emissions and wastewater/effluents release</li> <li>• Traffic-related air quality, Traffic-related noise</li> </ul>	<ul style="list-style-type: none"> <li>• Health impacts due to air emissions and noise and effluents released.</li> <li>• Traffic-related air quality impacts.</li> <li>• Traffic-related noise impacts.</li> </ul>	<ul style="list-style-type: none"> <li>• Implement proper safety standards.</li> <li>• Provide personal protection equipment (PPE) for staff, such as safety shoes, helmets, masks, gloves, protective clothing, goggles, full—face eye shields, and ear protection.</li> <li>• Maintain the PPE under a regular checking and replacement program.</li> <li>• Provide safe and healthy work environment to workers, taking into account inherent risks in its particular construction activity and specific classes of hazards in the work areas.</li> </ul>

Occupational Health safety	National and Regional Impacts	<ul style="list-style-type: none"> <li>Accidents, Effects on health of workforce, Safety at work.</li> </ul>	<ul style="list-style-type: none"> <li>Accidents, Effects on health of workforce, Safety at work.</li> </ul>	<ul style="list-style-type: none"> <li>A traffic management plan will be developed by the construction contractor to prevent incidents of accidents which may occur due to transportation of machinery and equipment to the project site.</li> <li>Undertake a full project community risk assessment followed by the development of a community emergency preparedness and response plan appropriate to its findings</li> </ul>
Global Impacts		<ul style="list-style-type: none"> <li>Human resources development.</li> <li>Economic development at regional and national level</li> </ul>	<ul style="list-style-type: none"> <li>Technological development in Punjab and Pakistan National and regional (Punjab) power cities</li> <li>Impacts on regional and national air quality</li> </ul>	<ul style="list-style-type: none"> <li>The increased government revenue could be used meet development objective by improve infrastructure and services in areas local to the profe</li> </ul>
		<ul style="list-style-type: none"> <li>Purchase of equipment and machinery from global markets</li> <li>Hiring the international contractors and consultants</li> </ul>	<ul style="list-style-type: none"> <li>Green-house gas emission and climate change</li> <li>Impacts on global air quality and global warming</li> </ul>	<ul style="list-style-type: none"> <li>Maintenance of all construction machinery on regular basis</li> <li>Use of machinery with appropriate exhaust system</li> <li>In order to control the particle emission all stages filtering system, duct collectors or humidification or other techniques(gas applicable) to the concrete batching and mixing plant will be provided.</li> </ul>

## **8. ENVIRONMENTAL MANAGEMENT & MONITORING PLAN**

### **8.1. Introduction**

This section presents the environmental management plan (EMP) for the proposed project. The EMP specifies the mitigation and management measures which the Proponent will undertake and shows how the Project will mobilize organizational capacity and resources to implement these measures.

The EMP covers information on the management and mitigation measures that will be taken into consideration to address impacts in respect of the operational phase of project.

### **8.2. Objectives**

The objective of the Environmental Management and Monitoring Plan (EMMP) is to address all the major environmental issues and provide framework for the implementation of the proposed mitigation measures during the operational phase of the project. The proper implementation of the EMP will ensure that all the adverse environmental impacts identified in the EIA report are adequately mitigated, either totally prevented or minimized to an acceptable level and required actions to achieve those objectives are successfully adopted by the concerned institutions or regulatory agencies.

The EMMP provides a delivery mechanism to address potential impacts of the project activities, to enhance project benefits and to introduce standards of good practice to be adopted for all project works. The EMMP has been prepared with the objectives of:

- Defining roles and responsibilities of the project Proponent for the implementation of EMMP and identifying areas where these roles and responsibilities can be shared with other parties involved in the execution and monitoring of the project.
- Outlining mitigation measures required for avoiding or minimizing potential impacts assessed in the EIA report.
- Developing a monitoring mechanism and identifying requisite monitoring parameters to confirm effectiveness of the mitigation measures recommended in the EIA report.
- Defining the requirements for communication, documentation, training, monitoring, management, and implementation of the mitigation measures.

### **8.3. Implementation of EMMP**

The implementation of EMMP should be carefully coordinated with the design and operational program of the project. This will ensure the implementation of relevant

mitigation measures at the appropriate project stages. It will also ensure that adequate resources are properly allocated to achieve the desired results. This EMMP has been prepared to satisfy the requirement of "IEE and EIA Regulations, 2022".

#### 8.4. Management Approach and Responsibilities

- The organizational roles of the key players are;
- The Developer will undertake overall responsibility for compliance with the EMMP. The developer will carry out regular monitoring to ensure that the contractors are effectively implementing their environmental and social requirements.
- Construction Contractor/s: The contractor/s will implement the majority of environmental and social mitigation and monitoring measures as required by their contract. The construction contractor/s is subject to certain liabilities under the environmental laws of the country, and under their contracts with the project developer

The separate responsibilities of the developer and the contractor are:

##### 8.4.1. Primary Responsibilities:

- Developer will coordinate with the concerned government departments and
- Respective highest-ranking officers of developer and the construction contractor will assume the primary responsibilities for environmental performance of the proposed Project.

##### 8.4.2. Project Management and Quality Control:

- Developer representative will be responsible for the overall environmental soundness of all field operations; and
- The construction contractor's Site Manager will be responsible for carrying out the construction activities in an environmentally sound manner

Specific roles and responsibilities for monitoring are provided in Table 8-1.

**Table 8-1 Roles and Responsibilities for Environmental Monitoring**

Aspect	Project Developer	Contractor	Relevant Documentation
Contracting	Ensuring that monitoring and mitigation requirements are included in the contract between the developer and the construction contractor/s.	Understanding the requirements and estimating the required resources	Contract between the developer and the construction contractor/s.
Monitoring Plan	Ensuring finalization of Monitoring Plan before commencement of project construction.	Prepare a Construction Management Plan.	Finalized Monitoring Plan and Construction Management Plan.

Resources	Ensuring availability of resources required for environmental monitoring.	Ensuring availability Of resources Required for environmental management and monitoring	Project budgets
Environmental Staff	Designating an Environmental Manager for the Proposed Project	Designating an Environmental Manager for they Proposed Project (may be combined with health and safety)	Job Description
Monitoring Surveys and Inspections	Undertaking regular inspections Contactor's environmental performance and carrying out further measurements when necessary.	Undertaking regular Inspections Contactor's environmental performance and carrying out Survey	Inspections and Survey Reports
Environmental Audit	Conducting periodic Audits of the construction site.	Conducting periodic internal audits.	Audit reports
Reporting	Ensuring that periodic environmental monitoring reports are received from the construction contractor/s	Producing environmental monitoring periodically distributing among the developer's management and appropriate staff members.	Environmental Monitoring Reports.
Corrective Actions	Verifying that activities carried out comply with the EIA/EMMP and identifying corrective actions if needed	Carrying out corrective actions as required.	Corrective actions record.
Maintenance of Records	Maintaining monitoring data and recording all incidents of environmental significance and related corrective measures.	Maintaining monitoring data and recording all Incident of environmental significance and related corrective measures	Environmental Database

## 8.5. Mitigation Plan

The Mitigation Plan is a key component of the EMMP. The Mitigation Plan lists all of the mitigation measures identified in the EIA. Based on the EIA for the proposed Project, the mitigation measures for the construction phase are provided in Table 8-2 and for the operational / maintenance phase in Table 8-3.

**Table 8-2 Mitigation Plan for Design & Construction Phase**

Sr. No	Environmental or Social Aspects	Measure	Responsibility
1.	<b>Design Stage Environmental Aspects</b>	<ul style="list-style-type: none"> <li>Choice of appropriate land i.e. not major agriculture land</li> <li>Choice of environmental friendly technologies</li> <li>Provision of combined effluent treatment plant</li> <li>Provision of treatment facilities like recovery and recycling units etc.</li> </ul>	Developer & Design Consultant

		<ul style="list-style-type: none"> <li>• Proper sewerage and solid waste management system provision</li> <li>• Adequate roads, sewerage, drainage, electricity etc. in the design</li> <li>• Proper raising of road level to mitigate flood disaster</li> </ul>	
2.	<b>Construction Noise Control Plan</b>	Periodic noise level surveys will be conducted for construction equipment's, operational machinery and vehicles.	Construction Contractor
		All high noise generating activities will be planned during the day time	Construction Contractor
		Use of horns will be banned and construction traffic will be kept to a minimum during night time	Construction Contractor
3.	<b>Ambient Air Dust Control Plan</b>	Frequency of sprinkling will be kept such that the dust remains under control.	Construction Contractor
		Water will be sprinkled on all open surfaces to control emission of dust	Construction Contractor
		Dust Emission from aggregate storage stockpiles and soil piles will be reduced by keeping the material moist by sprinkling of water at appropriate frequency or erecting windshield walls around the piles or covering the pile to reduce dust emission.	Construction Contractor
4.	<b>Soil Erosion</b>	Construction site will be appropriately marked	Construction Contractor
		The machinery movement will be restricted only to the construction area	
		Measures for soil erosion control (e.g. silt fences, rip rap) will be carried out where necessary during construction	
		The construction sites will be restored as close as possible to their natural (pre-project) conditions after completion of construction activities. For this purpose, a Site Restoration Plan will be prepared that may include the following:  Removal of remains, extra construction material, equipment parts cable, or timber Disposal of extra soil Filling of all trenches and pits Repair to damaged or blocked drainage Soil erosion control measures where necessary	
5.	<b>Water Management</b>	Potable Water Supply: The provision of drinkable water and safe drinking utensils at various points on the site.	Construction Contractor
		<b>Water Conservation:</b>	

		<p>a) To create awareness and boost the construction workforce to use water carefully and there is no water wastage.</p> <p>b) Negotiate the use of water for any purpose with the appropriate authorities and obtain written approval.</p> <p>c) The contractor will not collect/make use of water from any other source than those designated to them as suitable for use</p>	
6.	<b>Waste Water Management</b>	<p>The Contractor will submit a site design of wastewater management system as part of the environmental management plan for prior approval</p> <p>Water discharged from the works including effluent from sewage treatment, wash water and storm-water from workshops and refueling areas, as well as all runoff from areas with pollution potential will comply with Provincial effluent standards.</p> <p>Plan the layout of batching areas, wash areas, and workshops with the following rules in mind:              Improve the layout to lessen disturbance to the environment and to neighbors              Concrete slabs need slope towards a conservancy tank so that run-off water can be collected. These tanks must be emptied, at least once in a week or when they are 60% full.</p>	Construction Contractor
7.	<b>Solid Waste Management</b>	<p>Construction wastes on site must be reused or recycled when possible.</p> <p>The Contractor must familiarize themselves with the definitions of waste and the Construction handling, storage and transport as suggested in the applicable environmental Contractor legislation</p> <p>On site Integrated waste management will be carried out by applying, in preference Construction order of waste avoidance, reuse, recycling and disposal.</p> <p>Burning of waste material will not be allowed except under special conditions and with Construction earlier approval of the Site Manager.</p> <p>The appropriate facilities must be provided and maintained for waste collection (e.g. Construction bins) at specific locations around the site camp such as the office, garage, parking, Contractor housing facilities and locations where food is consumed.</p>	Construction Contractor
8.	<b>Storage and Handling of Hazardous Substances</b>	<p>Any spills will be rendered harmless and arrangements made for appropriate collection and disposal including cleaning materials, absorbents and contaminated soils</p>	Construction Contractor

		To ensure that spill kits are available on site to clean the leaks and spills.	
		To obtain storage and disposal permits / approvals necessary and comply with the conditions attached.	
		To ensure that only nominated areas are used for the handling/storage of construction materials.	
		The Contractor will be accountable for the training and education of all staff on site who must be handling the material about its proper use, handling and disposal as well as spill response.	
		A contingency procedure will be developed for dealing of spills	
		Hazardous chemicals used in construction must be kept in secondary containers. The relevant Material Safety Data Sheets (MSDS) must be provided on site.	
		Appropriate and approved facilities for the storage and recycling of used oil and contaminated hydrocarbons must be provided.	

**Table 8-3 Mitigation Plan for Operation Phase**

Sr. No.	Environmental or Social Aspects	Measure	Responsibility
1.	<b>Air Pollution Management</b>	The Green Technology Zone Technological STZ must be designed so as to Proponent ambient air quality will fall within the levels acceptable for regulatory bodies (i.e. within PEQS and where PEQS are not provided NEQS, international standards must be complied with).	Proponent
		The Green Technology Zone Technological STZ must be provided with the appropriate NOx control equipment to minimize the production of NOx.	Proponent
		Dust control mechanisms must be utilized including the following: Electrostatic Precipitators will be installed in the units where necessary for the control of Dust.	Proponent's Environment Manager
2.	<b>Ground Water Management</b>	Inspection of Ground water quality must be carried out periodically to check any adverse effect on ground water quality.	Proponent's Environment Manager
		All chemical usage areas and zone areas must be cemented.	
3.	<b>Waste Water Management</b>	The Waste Water Treatment Plant must be installed for wastewater treatment.	

		<p>Water discharged from the works including wash water, effluents from sewage treatment and storm-water from workshops and refueling areas, and areas of run off with potential of pollution will comply with Punjab Environmental Quality Standards.</p> <p>On regular basis chemical analysis of crops cultivated on treated wastewater will be done once in every crop season to ensure there will be no contamination of food from treated wastewater</p>	Proponent's Environment Manager
4.	<b>Operational Noise Control</b>	<p>Permissible limits, final design of HY Construction Pvt. Ltd Technological Estate (IE) ensure the level of noise from the operation must be within the level suggested by the manufacturers</p> <p>Noise from activities at the zone site during the operation must be within acceptable limits (according to the standards discussed previously), taking into consideration that maintenance activities may be required at the outside of working hours, for example, in the case of emergencies.</p>	Proponent's Environment Manager
5.	<b>Fauna and Flora</b>	<p>Implementation of Site restoration plan and area ecology up-gradation plan.</p> <p>Use of indigenous plants in the premises and provision of green belt in the HY Construction Pvt. Ltd Technological Estate (IE). Fragrance producing trees plantation to evade odor issue (if any).</p> <p>The worker may not harm/kill any wildlife during the operation and maintenance of the Green Technology Zone STZ</p>	Proponent's Environment Manager
6.	<b>Solid Waste Management</b>	<p>Solid wastes generated in Green Technology Zone STZ must be reused or recycled up to maximum extent.</p> <p>Green Technology Zone STZ Integrated waste management will be done by applying in preference order of, waste avoidance, reuse, recycling and disposal.</p> <p>The appropriate facilities must be provided and maintained for waste collection (e.g. Bins, containers) at specified areas within Green Technology Zone STZ</p> <p>Sorting of waste will be carried out at source (I.e. the separation of glass, tins, paper etc.). Recycled waste of this sort will be collected by a local licensed contractor.</p> <p>Every industry in Green Technology Zone STZ would be the accountable for the supply of waste bins/skips throughout the site at areas where construction staff are working. These waste bins must be provided with lids and an external closing system to prevent fillings from blowing out, and must be scavenger proof to prevent animals appealed to waste.</p>	Proponent's Environment Manager

7-	<b>Storage and Handling of Hazardous Substances</b>	Any spills will be rendered harmless and arrangements made for appropriate collection and disposal including cleaning materials, absorbents and contaminated soil.	Proponent's OHS Manager
		The OHS Manager will also be accountable for the necessary training, awareness and education of all staff regarding the safe handling and disposal as well as spill response.	
		An emergency procedure for the control of spills must be formulated	
		Hazardous chemicals must be stored in designated containers made up of appropriate material, clearly marked and labelled with appropriate safety sign. The relevant Material Safety Data Sheets (MSDS) must be provided on site.	
8.	<b>Occupational Health &amp; Safety Management</b>	A Health and Safety Management Plan will be established to ensure worker safety.	Proponent's OHS Manager
		OHS manager must adhere to the guidelines of the appropriate health and safety legislation & standards.	
		Communication of suitable and obligatory safety measures relating work procedure/instruction of site to all aspects of the operation to workers.	
		The use of PPEs on operation of is mandatory for all personnel while entering in the operational areas of Green Technology Zone STZ	
		Specific firefighting system must be installed to deal with fire hazard and equipment's must be positioned on sites easily accessible and visible.	
		Speed limits must be followed in all areas of the Green Technology Zone STZ including public roads and private property to avoid potential hazard of accident.	
9.	<b>Hindrance in aviation traffic</b>	Same of Environmental Management Plan as suggested for construction phase of Green Technology Zone STZ	

## 8.6. Waste Management

The Construction contractor/s will be responsible for preparing a waste management A summary is provided in Table 8-4.

**Table 8-4 Waste Management Plan Summary**

No.	Material Waste	Final Disposal Method	Associated Risk	Recommended Procedure
1.	Iron	<ul style="list-style-type: none"> <li>Material returned</li> <li>To store as un-useable</li> <li>Scrap Store</li> <li>Recycling</li> </ul>	Equipment and parts may be contaminated with oil or other liquids. This may pose hazards during recycling and/or melting.	Separate contaminated parts and ensure disposal contractor cleans and removes

				contaminations before recycling equipment.
2.	Copper	<ul style="list-style-type: none"> <li>Recycling</li> <li>Scrap Store</li> </ul>	Copper wires and tubes may be covered with insulation and may pose hazard if melted	Separate insulated copper from rest and ensure disposal contractor removes it before recycling.
3	Wood, Cotton, Plastic, Waste and Packing Materials	<ul style="list-style-type: none"> <li>Recycling</li> <li>Landfill</li> </ul>	Burning of wood, paper, plastic and other materials may cause air pollution Littering due to improper disposal	Ensure waste contractor disposes all non—recyclable plastic wastes and other non—recyclable materials at land disposal.
4.	Electronics	<ul style="list-style-type: none"> <li>Material returned to store as un-useable</li> </ul>	Some electronic equipment may contain toxic materials and pose a health risk if opened or dismantled.	Ensure contractor disposes equipment properly and equipment is opened only under guidance of qualified professional.
5.	Insulation	Material Re-used Landfill	Burning may cause air pollution. Littering due to improper disposal	Ensure contractor disposes insulation properly at landfill site.
6.	Oil	Recycling Contractors	May cause contamination of soil or waterways	Ensure properly certified recycling contractors are used.
7.	Concrete	Landfill or reuse for filling	None	Ensure safe storage till Disposal

## 8.7. Monitoring Plan

Environmental monitoring is a vital component of an EMMP. It is the mechanism through which the effectiveness of the EMMP is evaluated. Furthermore, the feedback provided by environmental monitoring is instrumental in identifying any problems and planning corrective actions.

### 8.7.1. Objective of Monitoring

The main objectives of environmental monitoring during the construction phase of the proposed Project will be to:

- To provide a mechanism to determine whether to project construction contractor/s and the developer are carrying out the project in conformity with the EIA and EMMP;

- To identify areas where the impacts of the proposed project are exceeding the criteria of significance and, therefore, require corrective actions.
- To document the actual impacts if the proposed project on physical, biological, and socio-economic/ cultural receptors, quantitatively where possible, in order to design better and more effective mitigation measures; and;
- To provide data for preparing the monitoring report to be submitted to the Punjab-EPA in accordance with the provincial and national legal requirement.

#### 8.7.2. Performance Indicators

Environmental parameters that may be qualitatively and quantitatively measured and compared are selected as 'performance indicators' and recommended for monitoring. These performance indicators will be monitored to ensure compliance with the national or other applicable standards and comparison with the baseline conditions established. A summary of performance indicators, and their applicable standards to ensure compliance, include:

- **Construction Phase:**
  1. Noise levels: PEQS
  2. Wastewater quality: PEQS
- **Operation Phase:**
  1. Ambient air quality (NO<sub>2</sub>, SO<sub>2</sub>, PM<sub>10</sub> and PM<sub>2.5</sub>): PEQS
  2. Noise levels: PEQS
  3. Wastewater quality: PEQS

#### 8.8. Environmental Records

The following environmental records will be maintained:

- Periodic inspection reports of Contractor's Environmental Officer;
- Incident record of all moderate and major spills. The record will include:
  - Location of spill;
  - Estimated quantity;
  - Spilled material;
  - Restoration measures;
  - Photographs;
  - Description of any damage to vegetation, water resource;
  - Corrective measures taken, if any; and,
  - Corrective measures taken, if any.
- Waste Tracking Register that will records of all waste generated during the

construction and operations: period. This will include quantities of waste disposed, recycled, or reused;

- Survey reports, in particular, the following:
- Soil erosion: Baseline survey, including photographs (or video), will be conducted to document pre-construction condition of the construction site,
- Vehicle and equipment noise; and,
- Ambient noise survey reports.

## 8.9. Environmental Training

Environmental training will help to ensure that the requirements of the EIA and EMMP are clearly understood and followed by all project personnel in the course of the project. The contractor will be primarily responsible for providing training to all project personnel. An environmental and social training program is provided in Table 8.5. This training program will be finalized before the commencement of the proposed Project.

**Table 8-5 Framework for the Environmental and Social Training Program**

Types of Training	Training Description	Training By	Personnel to be Trained	Period	Duration
Occupational Health and Safety	Training should be provided to aware staff to conform to safety	External Sources	OHS Manager	Before starting of project activities	Full day (8 hours session)
Occupational Health and Safety	Health, safety and hygiene proper usage of personnel protective equipment precautions to be taken for working in confined areas.	OHS Manager	Workers Staff	Before starting of project activities During Project activities	Full day (8 hours session)
Health, Safety and Environmental Auditing	Procedures to carry out Health, Safety and Environmental Audits Reporting requirements	External Sources	Staff responsible for Inspection/ audits	Before starting of project activities	Full day (8 hours session)
Waste Disposal and Handling	Segregation, identification of hazardous waste, use of PPEs, waste handling	External Sources	Relevant workers Relevant Staff	Before starting of project activities	Full day (8 hours session)
Social & Environmental Laws & Regulations, norms, procedures and guidelines of Government	Environmental standards and their compliance Govt. regulations	External Sources	OHS staff managers & supervisor	Before starting of project activities	Full day (8 hours session)

Implementation of environmental management and monitoring plan	Concepts of environmental management and monitoring plan	External Sources	OHS staff managers & supervisor	Once in 3 months during the entire construction period.	Full day (8 hours session)
--	--	------------------	---------------------------------	---	----------------------------

### 8.10. Construction and Operation Management Plan

The construction contractor will develop a smart Construction Management Plan (CMP) utilizing digital tools and geospatial technology, aligned with the framework provided in Table 8-6. This CMP will be submitted to the STZ Developer for review and approval. Through the use of Geographic Information Systems (GIS) and Building Information Modeling (BIM), all designated zones within the STZ will be mapped and monitored in real-time for efficient and secure usage during construction.

The CMP will digitally identify and geotag all operational areas, including:

- **Smart Campsites:** Equipped with biometric access and surveillance systems.
- **IoT-Enabled Storage Zones:** For raw materials and high-value tech equipment with automated inventory management.
- **Digitally Tracked Waste Yards:** Using sensors and apps to monitor types and quantities of waste generated.
- **Hazardous Material Zones:** Specifically allocated and remotely monitored areas for materials like oil or chemicals, managed via automated spill detection systems.
- **Vehicle Parking and Logistics Hubs:** Featuring RFID-enabled entry/exit, vehicle tracking, and designated zones for loading/unloading monitored by drone surveillance.

The digital CMP will ensure that all construction operations within the STZ are streamlined, environmentally compliant, and technologically integrated, supporting the smart vision of the Special Technology Zone.

**Table 8-6 Impacts and Mitigation Measures during Construction & Operation Phase**

Subject Area	Potential Impacts During Construction	Potential Impacts During Operation	Mitigation
Physical Environment	<p><b>Air Quality</b></p> <ul style="list-style-type: none"> <li>• Dust from construction activities.</li> <li>• Traffic-related air quality impacts.</li> </ul>	<ul style="list-style-type: none"> <li>• Effects of stacks emissions on ambient air quality.</li> <li>• Traffic-related air quality impacts.</li> <li>• Green House Gas emissions</li> </ul>	<ul style="list-style-type: none"> <li>• Watering of the material stockpiles, access roads and bare soils on an as required basis to minimize dust.</li> <li>• Increase the watering frequency during periods of high risk (e.g. high winds).</li> <li>• Stored materials such as gravel and sand should be covered and confined</li> <li>• Vehicles with appropriate exhaust systems will be used.</li> <li>• Maintenance of all vehicles on regular basis.</li> <li>• Establish and implement vehicle speed limits to minimize dust generation</li> <li>• Cover haul vehicles transporting dusty materials (cement, borrow) moving outside the construction site</li> <li>• Use of specified haulage routes and reduce vehicle speed where required.</li> <li>• Tuning of vehicles should be made mandatory to reduce the emissions of NOx, SOx, CO and PM10.</li> <li>• Haul-trucks carrying, earth, sand, aggregate and other materials should be kept covered during transportation of materials and during storage at site, with tarpaulin.</li> </ul>

	<p><b>Water Resources</b></p>	<ul style="list-style-type: none"> <li>Control and management of site drainage.</li> <li>Wastewater discharge, Sewage disposal and foul drainage</li> <li>Effects on groundwater quality.</li> </ul>	<ul style="list-style-type: none"> <li>Water requirements for operation</li> <li>Discharge of process and wastewater.</li> <li>Operation of drainage systems on site.</li> <li>Discharge of storm water, sewage and drainage</li> </ul>	<ul style="list-style-type: none"> <li>Stockpiles of potential water pollutants (i.e. oils, construction materials, fuel, etc.) shall be placed so as to minimize the potential of contaminants to enter local watercourses or storm-water drainage.</li> <li>Preparation of Emergency Spills Contingency Plan.</li> <li>Storm-water runoff from all fuel and oil storage areas, workshop, and vehicle parking areas is to be directed into an oil and water separator before being discharged to any watercourse.</li> <li>Rainwater harvesting should be done on the roof top of the Technological buildings harvesting system.</li> <li>The water conservation will also be adopted in Industries.</li> </ul>
	<p><b>Soils, Geology and Topography</b></p>	<ul style="list-style-type: none"> <li>Effects on soils and topographic features.</li> <li>Soil contamination</li> </ul>	<ul style="list-style-type: none"> <li>Soil contamination during construction phase</li> </ul>	<ul style="list-style-type: none"> <li>Ensure the topography of the final surface of all raised lands are favorable to enhance natural draining of rainwater / flood water</li> <li>Restore the natural landscape of the construction sites after completion of work</li> </ul>
<p><b>Land Use, Landscape and Visual Issues</b></p>		<ul style="list-style-type: none"> <li>Impacts on existing land use on site.</li> <li>Impacts on existing land use in the surrounding area.</li> <li>Effects of construction activities on landscape character.</li> <li>Visual impact of construction activities.</li> </ul>	<ul style="list-style-type: none"> <li>Impacts on existing land use on site.</li> <li>Impacts on existing land use in the surrounding area.</li> <li>Effects on landscape character.</li> <li>Visual impact of operating facilities.</li> </ul>	<ul style="list-style-type: none"> <li>Stop work and inform the site manager immediately if, during construction, an archaeological or burial site is discovered.</li> <li>It is an offence to restart work in the vicinity of the site until approval to continue is awarded by the plant management.</li> <li>Resolve landscape change issue in consultation with local leaders and supervision consultants.</li> </ul>

Ecological Environment	Flora	<ul style="list-style-type: none"> <li>Loss of natural vegetation and crops</li> </ul>	<ul style="list-style-type: none"> <li>Impacts on flora due to altered drainage and runoff patterns</li> </ul>	<ul style="list-style-type: none"> <li>Removal of trees should be limited to the development footprint</li> <li>Construction activities shall reduce the loss or disturbance of vegetation</li> <li>Use clear areas to avoid cutting of trees</li> <li>A procedure shall be prepared to manage vegetation removal, clearance and reuse</li> <li>Inform the plant management before clearing trees</li> </ul>
	Fauna	<ul style="list-style-type: none"> <li>Losses of habitat or species due to land lake.</li> <li>Disturbance or damage to adjacent habitat of species</li> </ul>	<ul style="list-style-type: none"> <li>Disturbance or damage to adjacent habitat</li> <li>Effects on birds migration routes</li> </ul>	<ul style="list-style-type: none"> <li>Project should ensure the safety of various animals at construction and operation camp area.</li> </ul>
	Economy Related Impacts	<ul style="list-style-type: none"> <li>Impacts on local skilled and un-skilled labor and businesses.</li> </ul>	<ul style="list-style-type: none"> <li>Impacts on local labor and businesses</li> </ul>	<ul style="list-style-type: none"> <li>The increased government revenue could be used to meet objective by improving infrastructure and services in areas local to the project.</li> </ul>

	<p><b>Social Settings and Services Related Impacts</b></p>	<ul style="list-style-type: none"> <li>Demographic changes due to influx of people.</li> <li>Pressure on existing infrastructure, utilities and services.</li> </ul>	<ul style="list-style-type: none"> <li>Small scale demographic and cultural changes.</li> </ul>	<ul style="list-style-type: none"> <li>Safe, reliable water supply, Sufficient housing for all.</li> <li>Treatment facilities for sewerage of toilet and domestic wastes</li> <li>In-house-community entertainment facilities.</li> </ul>
	<p><b>Public Health Related Impacts</b></p>	<ul style="list-style-type: none"> <li>Traffic congestions and disruption to road users</li> <li>Health impacts due to construction related dust and</li> <li>air emissions and wastewater/effluents release</li> <li>Traffic-related air quality.</li> <li>Traffic-related noise</li> </ul>	<ul style="list-style-type: none"> <li>Health impacts due to air emissions and noise and effluents released.</li> <li>Traffic-related air quality impacts.</li> <li>Traffic-related noise impacts.</li> </ul>	<ul style="list-style-type: none"> <li>Implement proper safety standards.</li> <li>Provide personal protection equipment (PPE) for staff, such as safety shoes, helmets, masks, gloves, protective clothing, goggles, full—face eye shields, and ear protection.</li> <li>Maintain the PPE under a regular checking and replacement program.</li> <li>Provide safe and healthy work environment to workers, taking into account inherent risks in its particular construction activity and specific classes of hazards in the work areas.</li> </ul>
	<p><b>Occupational Health safety</b></p>	<ul style="list-style-type: none"> <li>Accidents.</li> <li>Effects on health of workforce.</li> <li>Safety at work.</li> </ul>	<ul style="list-style-type: none"> <li>Accidents.</li> <li>Effects on health of workforce.</li> <li>Safety at work.</li> </ul>	<ul style="list-style-type: none"> <li>A traffic management plan will be developed by the construction contractor to prevent incidents of accidents which may occur due to transportation of machinery and equipment to the project site.</li> <li>Undertake a full project community risk assessment followed by the development of a community emergency preparedness and response plan appropriate to its findings.</li> </ul>

	<p><b>National and Regional Impacts</b></p>	<ul style="list-style-type: none"> <li>Human resources development</li> <li>Economic development at regional and national level</li> </ul>	<ul style="list-style-type: none"> <li>Technological development in Punjab and Pakistan</li> <li>National and regional (Punjab) power cities</li> <li>Impacts on regional and national air quality</li> </ul>	<ul style="list-style-type: none"> <li>The increased government revenue could be used to meet development objective by improving infrastructure and services in areas local to the project</li> </ul>
	<p><b>Global Impacts</b></p>	<ul style="list-style-type: none"> <li>Purchase of equipment and machinery from global markets</li> <li>Hiring the international contractors and consultants</li> </ul>	<ul style="list-style-type: none"> <li>Green-house gas emission and climate change</li> <li>Impacts on global air quality and global warming</li> </ul>	<ul style="list-style-type: none"> <li>Maintenance of all construction machinery on regular basis</li> <li>Use of machinery with appropriate exhaust system</li> <li>In order to control the particle emission all stages filtering system, duct collectors or humidification or other techniques(as applicable) to the concrete batching and mixing plant will be provided.</li> </ul>

### 8.11. Environment Management Team

Following functionaries will be involved in the implementation of EMMP:

- The project Proponent as owners of the EMMP.
- Project contractor(s) as executors of the EMMP during installation and operational phase of the project.

Operational & Maintenance (O&M) and the Health, Safety and Environment team of the project as an executor of the EMMP during the installation and operational phase of the project.

*Table 8-7 List of Individuals and their Responsibilities*

Sr.	Designation	Responsibilities
1	Sr. Manager HSE	HSE Supervision
2	Manager HSE	Ensure EMP implementation
3	Assistant Manager	Operational management and control
4	Dy. Manager	Supervision and monitoring

## **9. INVOLVEMENT OF STAKEHOLDER'S / PUBLIC CONSULTATION**

### **9.1. Introduction**

Stakeholder consultation within the framework of a Special Technology Zone (STZ) is a vital component of smart project governance, utilizing both traditional engagement and digital tools to ensure transparency and responsiveness. This technology-driven approach facilitates seamless communication with a diverse array of stakeholders, leveraging virtual platforms, smart feedback systems, and data analytics for efficient interaction.

Through the use of digital dashboards, stakeholder feedback is not only collected but also analyzed in real-time to identify patterns, assess needs, and highlight areas of concern. Artificial Intelligence (AI) tools support the processing of large-scale stakeholder inputs, allowing for tailored responses and improved planning.

Stakeholders in the STZ context include government regulators, tech startups, local residents, environmental bodies, academia, and potential investors—each playing a crucial role in the project's lifecycle. Both those benefiting from and those potentially impacted by the technological development are included in the consultation process through online forums, surveys, virtual town halls, and social media integration.

This smart consultation process ensures inclusivity, builds community trust, and strengthens the sustainability of the STZ project by aligning it with stakeholder priorities and expectations.

### **9.2. Principles of stakeholders Consultation**

For this EIA, the stakeholder's consultation activities were executed based on the following principles:

- Transparency;
- Openness;
- Accessibility; and,
- Inclusion.

### **9.3. Benefits and Objectives of Stakeholder's Consultation**

Consultation with stakeholders in the context of Special Technology Zones (STZs) enhances community understanding of the technological development and provides project proponents with clearer insights into stakeholder expectations. Integrating digital platforms like virtual town halls, online surveys, and AI-driven sentiment analysis can make consultations more inclusive and data-driven. This tech-enabled engagement significantly enriches the Environmental Impact Assessment (EIA) process by capturing diverse concerns and mapping

influence patterns. As a result, it helps pinpoint the root causes of environmental challenges early on, allowing for proactive, tech-supported mitigation strategies.

This can be used to evaluate direct and indirect environmental impacts and assess short term and long-term resource use implications. The input from local communities and NGOs can help evaluate alternatives and strengthen the management planning by incorporating local input and know-how.

An informed public within a Special Technology Zone (STZ) can better assess the balance between technological advancement and potential environmental or social impacts. By leveraging smart communication tools such as dedicated mobile apps, online dashboards, and real-time feedback systems, the community is empowered to engage meaningfully in the project's lifecycle. This transparent, tech-enhanced engagement fosters stronger trust in the project proponent, encourages collaborative design input, and strengthens local support. According to the Asian Development Bank, such inclusive approaches directly contribute to smoother implementation, with development aligned to the human and digital ecosystem of the area. The objectives of stakeholder consultation are to:

- Promote better understanding of the proposed operation through explaining its objectives and its potential positive and negative impacts.
- Identify and address concerns of all interested and affected stakeholders.
- Provide a mechanism to resolve issues identified by communities, before project plans are finalized and development begins, thereby, avoiding public outcry and resentment.
- Instill trust between various stakeholders and the Proponent to promote cooperation.

#### **9.4. Identification and Classification of Stakeholders**

During the field survey, significant efforts were made to identify the possible categories of stakeholders and their stakes. Identification of stakeholders is important for the sustainability of a developmental project and helps to evaluate and envisage the role of stakeholders. The influence or impact of the project on stakeholders can be elaborated in the form of a matrix and the mitigation measures are proposed accordingly. All the stakeholders had different types of stakes according to their professions.

#### **9.5. Methodology for Consultation**

Stakeholder consultation is a two-way flow of information and dialogue between the project Proponent and stakeholders, specifically aimed at developing ideas that can help shape project design, resolve conflicts at an early stage assist in implementing solutions and monitor ongoing activities.

Various techniques are used worldwide to carry out the stakeholder consultation that includes discussions, meetings and field visits. A series of scoping sessions and formal focus group discussions were carried out with environmental experts and individuals. The meetings were held at various locations.

### **9.6. Key Consulted Stakeholders**

The stakeholders consulted in this case are public as well as environmental experts and individuals working in profession of environment.

#### **9.6.1. Responsible Authority**

The proponent is the responsible authority to take all measures prior to the site activities.

#### **9.6.2. Other departments and agencies**

For the impact analysis detailed meetings of local community, education institutes, health institutes, hospital and NGOs were held with the management. Issues were discussed that may affect the environment and also the implementation of proposed project. All possible mitigation measures were considered and incorporated in the Environmental Management Plan. Scoping sessions, focused group discussion and way side consultations were held with the relevant stakeholders in the area. The purpose of such consultations is to obtain the feedback from the relevant persons.

#### **9.6.3. Environmental Practitioners and Experts Team**

Experts of M/s HTMA. visited the project site, had discussions with stakeholders and consulted with the local people of nearby and other villages to evaluate the project socio-economic impacts. People of the area belong to different professions like mostly belong to employment, own businesses, doctors, some in abroad, in Army, teaching, in agriculture, etc. Women were also consulted for their point of view regarding the betterment of the area by this project, some of them communicated but according to social value of the area they mostly hesitate to communicate comfortably and get pictured. People provide the massive information about the project and have positive remarks regarding the project development.

#### **9.6.4. Affected & Wider Community**

There is no affected community present in the radius of our study area. The surrounding area is Technological.

#### **9.6.5. Summary of Concerns of Consulted Stakeholders**

The summary of stakes of consulted stakeholders is given below.

- The activities of the project must be studied in detail to assess all the impacts resulting from the project.
- All the environmental parameters i.e. ambient air quality, noise levels and water quality must be kept within permissible limits of PEQS.
- Project specific mitigation measures must be implemented during project's lifecycle.
- A proper Environmental Management and Monitoring Plan should be prepared to reduce adverse environmental impacts.
- Waste management must be taken into consideration (if generated during project activities).
- Management practices suggested in EMMP for solid waste should be implemented during operation of the project.
- The findings of the EIA report must be incorporated into the design and planning phase of the project.
- The EIA report should be compiled appropriately according to reporting style as suggested in Guidelines/Checklist.
- The project holds a good economic circulation.

## 10. CONCLUSIONS AND RECOMMENDATIONS

Based on the master plan, preliminary design, environmental and social field surveys, and impact assessment of the proposed Special Technology Zone (STZ) project, it is concluded that although some environmental impacts may arise, most are of short-term duration and occur primarily during the construction phase. These include physical effects like dust, noise, water pollution, and temporary disruption of community access. However, through the integration of technological solutions and modern environmental practices, these impacts can be effectively managed. For example, the use of abatement technologies such as electrostatic precipitators, smart effluent treatment plants, automated monitoring systems, and the establishment of green buffer zones can help control long-term environmental degradation during the operational stage. Waste management technologies have been embedded in the design to ensure proper handling and disposal of solid and liquid waste, as well as gaseous emissions. All environmental baselines, including air and noise quality, are currently within permissible NEQS limits. The social impacts, including worker safety, community mobility, and public security, are also considered temporary and have been addressed through a well-structured Environmental Management and Monitoring Plan (EMMP). The plan defines responsibilities, timelines, and performance indicators, with a special focus on ensuring safety via digital monitoring tools, fire detection systems, and accessible medical aid. EPA Punjab's environmental monitoring guidelines will be strictly followed. If the recommended mitigation measures are fully implemented, the development of the STZ will pose minimal risk to the area's environmental and social fabric while significantly boosting employment and economic growth in the region.

## APPENDICES

## Appendices-I: Glossary

**Act** means the Pakistan Environmental Protection Act, 1997.

**Contamination** is introduction of impurities in the environment.

**Environment** means (a) air, water and land; (b) all layers of the atmosphere; (c) all organic and inorganic matter and living organisms; (d) the ecosystem and ecological relationships; (e) buildings, structures, roads, facilities and works; (f) all social and economic conditions affecting community life; and (g) the inter-relationships between any of the factors in sub-clause (a) to (f).

**Environmental Assessment** a technique and a process by which information about the environmental effects of a project is collected, both by the developer and from other sources, and taken into account by the planning authority in forming their judgments on whether the development should go ahead.

**Environmental Management** to carry out the developmental activities in sustainable manner.

**Impact on Environment** means any effect on land, water, air or any other component of the environment, as well as on wildlife harvesting, and includes any effect on the social and cultural environment or on heritage resources.

**Mitigation Measures** means the measures for the control, reduction or elimination of an adverse impact of a development on the environment, including a restorative measure.

**Project Proponent** is a person, company, NGO or any agency that sponsors and promotes a project.

**Regulations** means the Pakistan Environmental Protection Agency Review of Initial Environmental Examination and Environment Impact Assessment Regulations, 2022.

**Pollution** means the presence in the environment or the introduction into it, of substances that have harmful or unpleasant effects.

**Social Cohesion** is defined as the willingness of members of a society to cooperate with each other in order to survive and prosper.

**Screening** is the first step of IEE/EIA study. It helps in determining whether a project requires an IEE or EIA.

**Sensitive Receptors** include, but are not limited to, hospitals, schools, daycare facilities, elderly housing and convalescent facilities. These are areas where the occupants are more susceptible to the adverse effects of exposure to toxic chemicals, pesticides, and other pollutants.

**Afforestation** is the planting of trees on land which was formerly used for land uses other than forestry is called afforestation.

**Special Economic Zone (STZ)** is an area in a country that is designed to generate positive economic growth. An STZ is normally subject to different and more favorable economic regulations compared to other regions in the same country, including tax incentives and the opportunity to pay lower tariffs.

**Technological Estate:** an area on the edge of a town or city specially designed for factories and businesses:

## **Appendices-II: List of Abbreviations**

<b>NCS</b>	National Conservation Strategy
<b>NOC</b>	No Objection Certificate
<b>EA</b>	Environmental Approval
<b>OHS</b>	Occupational Health and Safety
<b>MICS</b>	Multiple Indicator Cluster Survey
<b>mm</b>	Millimeters
<b>EPA</b>	Environmental Protection Agency
<b>IEE</b>	Initial Environmental Examination
<b>NEQS</b>	National Environmental Quality Standards
<b>EMP</b>	Environmental Management Plan
<b>EMP</b>	Environmental Monitoring Plan
<b>GOP</b>	Government of Pakistan
<b>km</b>	Kilometer
<b>m</b>	Meters
<b>NGO</b>	Non-Governmental Organization
<b>BDL</b>	Below Detection Limit
<b>SWM</b>	Solid Waste Management
<b>TMA</b>	Tehsil Municipal Authority
<b>PPC</b>	Pakistan Penal Code
<b>PEPA</b>	Pakistan Environmental Protection Act
<b>NDWQS</b>	National Drinking Water Quality Standards
<b>LAA</b>	Land Acquisition Act
<b>sq mi</b>	Square Miles
<b>PPE</b>	Personal Protective Equipment
<b>MMD</b>	Mines and Minerals Department
<b>CSR</b>	Corporate Social Responsibility
<b>SKP</b>	Lahore
<b>M. Tons</b>	Metric Tons
<b>in</b>	Inches
<b>GLS</b>	Ground Level Surface
<b>MTa</b>	Metric Tons Annually
<b>TPD</b>	Tons Per Day
<b>HSE</b>	Health Safety and Environment

## Appendices-III: Environmental Map

## Appendices-IV: References

- [https://www.researchgate.net/publication/318209792\\_A\\_study\\_of\\_drinking\\_water\\_of\\_Technological\\_area\\_of\\_Lahore\\_with\\_special\\_concern\\_to\\_arsenic\\_manganese\\_and\\_chromium](https://www.researchgate.net/publication/318209792_A_study_of_drinking_water_of_Technological_area_of_Lahore_with_special_concern_to_arsenic_manganese_and_chromium)
- [https://en.wikipedia.org/wiki/Quaid-e-Azam\\_Business\\_Park\\_Lahore](https://en.wikipedia.org/wiki/Quaid-e-Azam_Business_Park_Lahore)
- <https://www.iqair.com/pakistan/punjab/shekhupura>
- <https://www.accuweather.com/en/pk/Lahore/259648/air-quality-index/259648>
- <https://www.worldweatheronline.com/Lahore-weather-averages/punjab/pk.aspx>
- [https://www.researchgate.net/publication/257632875\\_August\\_08\\_2010\\_Lahore\\_Pakistan\\_earthquake\\_Seismotectonic\\_investigation\\_using\\_focal\\_mechanism\\_solution\\_and\\_gravity\\_data](https://www.researchgate.net/publication/257632875_August_08_2010_Lahore_Pakistan_earthquake_Seismotectonic_investigation_using_focal_mechanism_solution_and_gravity_data)
- <https://beautyofpakistan.com/locations/khanpur-canal>
- [https://en.wikipedia.org/wiki/Lahore\\_District](https://en.wikipedia.org/wiki/Lahore_District)
- [averages/punjab/pk.aspx](https://www.worldweatheronline.com/Lahore-weather-averages/punjab/pk.aspx)
- [http://uaf.edu.pk/uaf\\_research/prj\\_42.html#:~:text=At%20all%20sites%20of%20district,9.5%20mg%2Fg%20dry%20soil.](http://uaf.edu.pk/uaf_research/prj_42.html#:~:text=At%20all%20sites%20of%20district,9.5%20mg%2Fg%20dry%20soil.)
- Multiple Indicator Cluster Survey(MICS)2007-08
- The IUCN Red List-A Key Conservation Tool
- Punjab Development Statistics 2005
- International Journal of Science, Environment and Technology, Vol. 1, No 3, 2012, 125 – 134
- Pakistan Highway Rehabilitation Project Sectoral Social and Environmental Assessment Phase I & II.
- (Khawaja, Saima Amin and Nusrat Jahan Nabeela. 2014), "Review of Pakistan Environmental Protection Agency Regulations, 2022", Published by: IUCN Pakistan (National Impact Assessment Programme),pp.7,11&13).
- 10. (Alecia M. Spooner), Environmental Science for Dummies, "The Environmental Science of Surface Mining".
- National Mineral policy 2013, Government of Pakistan, Ministry of Petroleum and Natural Resources, Islamabad, Pakistan February 2013.
- Pakistan Environmental Protection Agency Review of Initial Environmental Examination and Initial Environmental Examination Regulations. 2022.
- Guidelines for the preparation and review of Environmental Reports, Pakistan

Environmental Protection Agency, Government of Pakistan, October 1997.

- Pollution Prevention and Abatement Handbook, The World Bank, 1998.
- The Pakistan National Conservation Strategy, Environment and Urban Affairs 'Division (Presently Ministry of Environment, Urban Affairs and Wild Life), Government of Pakistan, Islamabad.
- Punjab Environmental Quality Standards for Drinking Water.
- Punjab Environmental Quality Standards for Motor Vehicle Exhaust and Noise.
- Punjab Environmental Quality Standards for Ambient Air.
- STANDARD HANDBOOK OF ENVIRONMENTAL ENGINEERING, BY Robert A. Corbitt, 1989, McGraw-HILL, INC.; New York, USA.
- Topographical Maps of Punjab.
- Punjab Environmental Quality Standards for Noise.
- The Canal and Drainage Act, 1873.
- The Punjab Plantation and Maintenance of Trees Act, 1974.
- The Punjab Wildlife (Protection, Preservation, Conservation and Management) Act and Rules, 1974.
- Information and data provided by the project proponent.
- Technical design data related to the project.
- Information gathered through discussions with the project related persons of the project proponent.
- 29. "Guidelines for Self-Monitoring and Reporting by the Industry (SMART)," Final Report, March 1998, approved by PEPC, August 1999
- [https://mnm.punjab.gov.pk/important\\_minerals\\_occurring\\_in\\_punjab#14](https://mnm.punjab.gov.pk/important_minerals_occurring_in_punjab#14)
- <https://en.wikipedia.org/wiki/Marl>

## **Appendices-V: Terms of Reference of Environmental Reports**

### **TERMS OF REFERENCE FOR EIA REPORT**


The agreement hereinafter called Agreement, is made between M/s HTMA Pvt Ltd Consultancy Firm/Consultant) and HY Construction Pvt. Ltd (Developer) to prepare and carry out follow up of Environmental Study Report for obtaining Environmental approval under Section 12 of Punjab Environment Protection Act 1997 (Amended 2017) for proposed project of **"DEVELOPMENT OF GREEN TECHNOLOGY ZONE BY HY CONSTRUCTION PVT. LTD NEAR SUNDAR INDUSTRIAL ESTATE, LAHORE"**.

The client has requested the consultancy firm to provide consultancy service to prepare and follow up of EIA Report and so that client may obtain Environmental Approval from EPA, Punjab under the Section 12 of PEPA 1997 (As Amended 2017) so mutually agreed terms and conditions are as under:

NOW THEREFORE, the parties here to hereby agree as follow:

- The client shall provide assistance and access to the information contained in the feasibility study, layout plan and other project relevant documents as and when required by the consultancy firm/consultant for performance of his obligations.
- The client shall provide all available data, maps, reports, etc. about the project including but not limited to layout plan of the project. Client will provide Lab Test Reports from EPA certified lab including noise level monitoring, wastewater analysis and air emissions report or any report/document/information demanded by the EPA.
- The client will provide to the consultancy firm with the letter of introduction and authorization and other documents as may be needed to enable consultancy firm consultant to perform the service.
- Responsible to pay all the dues of the consultants as per the agreed terms and conditions.
- The consultancy firm/consultant shall carry out the services in accordance with the provisions of the agreement including:
- Shall follow up the EIA/EIA Report and other file required with due diligence necessary/required for obtaining its approval from EPA Punjab under the statutory requirements of PEPA 1997 (amended in 2017).
- Shall give the consultancy for the preparation of the detailed Environmental Management & Monitoring Plan for enhancing the environmental conditions during installation and operational phases such as mitigation measures for wastewater, solid waste, air emissions, plantation, management of surface runoff, mitigation of socially adverse impact, if any.

- Will evaluate all the activities during the installation and operational phases and recommend suggestions/actions to comply with PEQS.
- Will follow up the EIA/EIA Report and file documents considering information/documents provided by the client.
- Shall examine the entire activities and list of the details of activities likely to cause adverse impacts during and after installation phase.
- Shall suggest mitigation measures for all such activities which may cause adverse impacts.



For and Behalf of

M/s HTMA (Pvt.) Ltd.  
(Consultancy Firm/Consultants)

For and Behalf of

HY Construction Pvt. Ltd  
(Proponent)

## **Appendices-VI: Consultant Team**

HTMA (Pvt.) Ltd. is a business entity manned by geoscientist, environmentalist, Technological & mineral clustering experts, surveyors and IT experts. The company has a wide range of experience in mining, regulatory regime, drafting of technical agreements, service agreements, management of mining, teaching & training, planning and development, IEE and EIA reports, preparation of feasibility reports and their implementation.

The Consultants preparing this report are specialists in the fields of geology, geological mapping, exploration, Mineral Resource estimation and classification, open pit mining, geotechnical and environmental field. Some of the listed areas highlight the chapters of services:

- Economic Geology
- Determination of geological exploratory techniques
- Mine design
- Selection of mine machinery and equipment
- Mine Development
- Mine Management
- Rescue and Recovery services
- Mine surveying & interpretation of boundary disputes
- Minerals processing
- Preparation of feasibility reports
- SWOT Analysis
- Establishment of Mining Villages and Mineral Cities
- Environmental Impact Assessment and Rehabilitation Studies
- Human resource development
- Legal opinion on mine regulatory regime
- Energy fuels and their selection on techno economic parameters
- Special focus on coal and rock salt mining
- Drilling and blasting for underground and surface mining techniques
- Safety measures for mines operation
- Consultancy relating to manufacturing, marketing & service areas

The contact information of the consultant is presented in Table.

Company	HTMA (Pvt.) Ltd.
Address	81-A Bridge Colony, Lahore cantt
Representative	Engr. Harris Naeem
Designation	Director Operations
Contact	0304 0444440
e-Mail	<a href="mailto:harris.naeem@hitechma.com">harris.naeem@hitechma.com</a>
Website	<a href="http://www.hitechma.com">www.hitechma.com</a>

## **Appendices-VII: Lab Reports**







## Appendices-VIII: Plantation Estimates

The development of green belts serves not only as foreground and background landscape features, resulting in harmonization by amalgamating the physical structures of the project site with the surrounding environment, but also functions as a pollution sink.

### ▪ Objectives

It is necessary to develop green belt in and around the project site with suitable plant species to achieve following objectives:

- To combat the air pollution effectively.
- To improve the quality of local as well as regional air.
- To avoid problems of soil erosion, noise and dust etc.

There will be no tree cutting at site due to project operations. Hence, there will be no disturbance to vegetation. In addition, the proponent will do plantation as a potential environmental enhancement measure.

Following plantation plan will be followed during project's lifecycle.

Item	Description
Spacing between two plants	2.0m×2.0m
Total plantation duration	Till Project Tenure
Total no. of samplings planted	100/- No.s.
Species of plants may be planted	Ornamental Plants/Indigenous Species

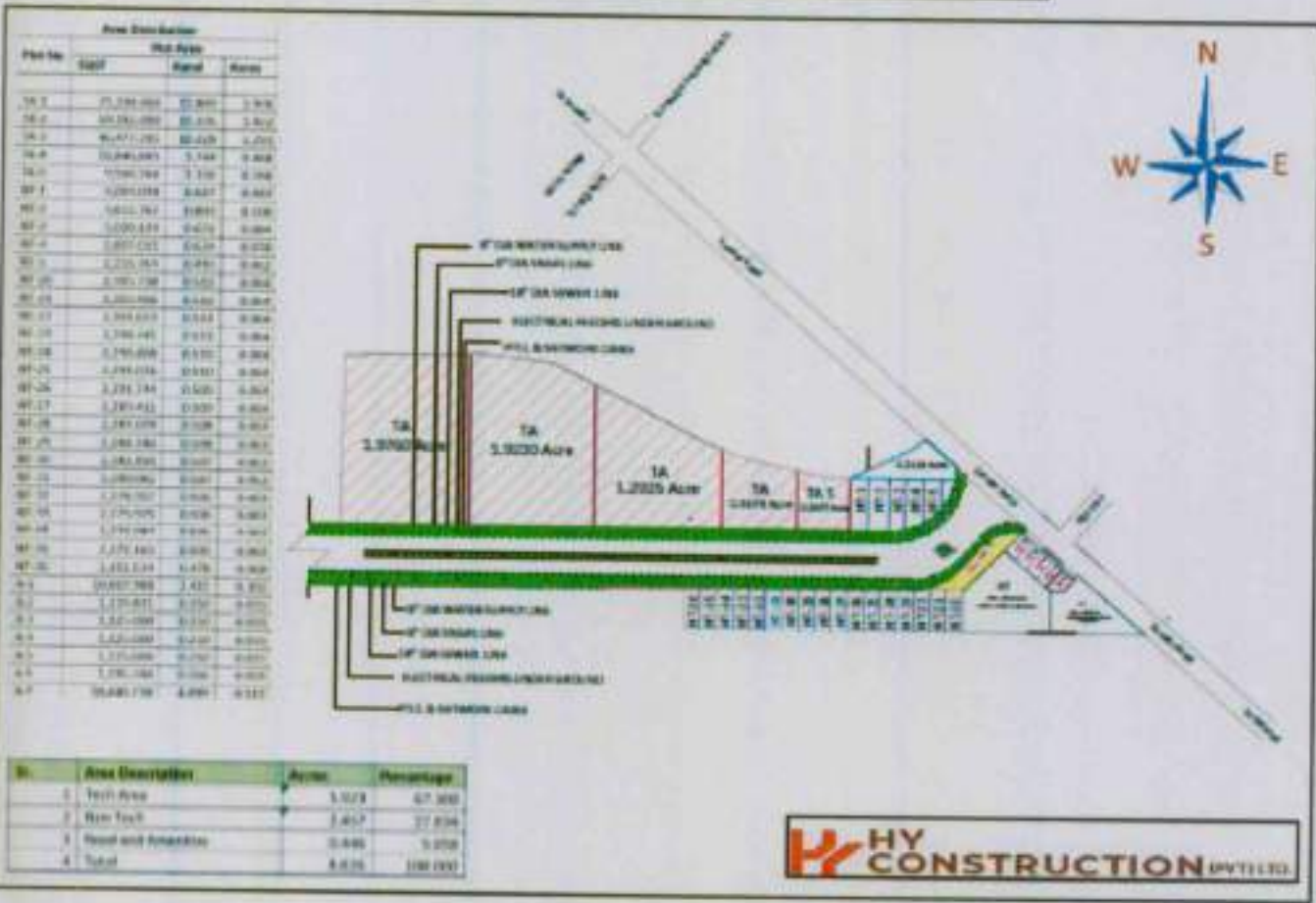
Noted that the plantation will start from first year and will only be carried out till project period subjected to the agreement between proponent and consultant and consent of the landowner.

### • Criteria for Selection of Plants Species

The plant species will be planted based on their ease of availability in the local market and their suitability of growth in the project area. Mostly indigenous species will be preferred.

## **Appendices-IX: Master Plant of the Project**

**GREEN TECHNOLOGY ZONE - MASTER PLAN**



Plot No.	Area Description		
	Size	Area	Area
TA 1	21,200,000	21,200	1.970
TA 2	34,300,000	34,300	3.162
TA 3	6,471,250	6,471	0.603
TA 4	32,440,000	32,440	3.000
TA 5	11,940,700	11,941	1.116
TA 6	3,090,000	3,090	0.288
TA 7	1,611,762	1,612	0.152
TA 8	1,030,170	1,030	0.096
TA 9	1,007,211	1,007	0.095
TA 10	2,225,363	2,225	0.210
TA 11	2,191,738	2,192	0.206
TA 12	3,400,000	3,400	0.318
TA 13	3,344,010	3,344	0.313
TA 14	3,246,441	3,246	0.305
TA 15	2,740,000	2,740	0.258
TA 16	2,740,000	2,740	0.258
TA 17	2,231,144	2,231	0.211
TA 18	2,231,144	2,231	0.211
TA 19	2,231,144	2,231	0.211
TA 20	2,231,144	2,231	0.211
TA 21	2,231,144	2,231	0.211
TA 22	2,231,144	2,231	0.211
TA 23	2,231,144	2,231	0.211
TA 24	2,231,144	2,231	0.211
TA 25	2,231,144	2,231	0.211
TA 26	2,231,144	2,231	0.211

No.	Area Description	Acres	Percentage
1	Test Area	1,970	0.185
2	Main Test	3,462	0.324
3	Road and Amenities	0,496	0.046
4	Total	5,928	0.555

**HY CONSTRUCTION PVT. LTD.**