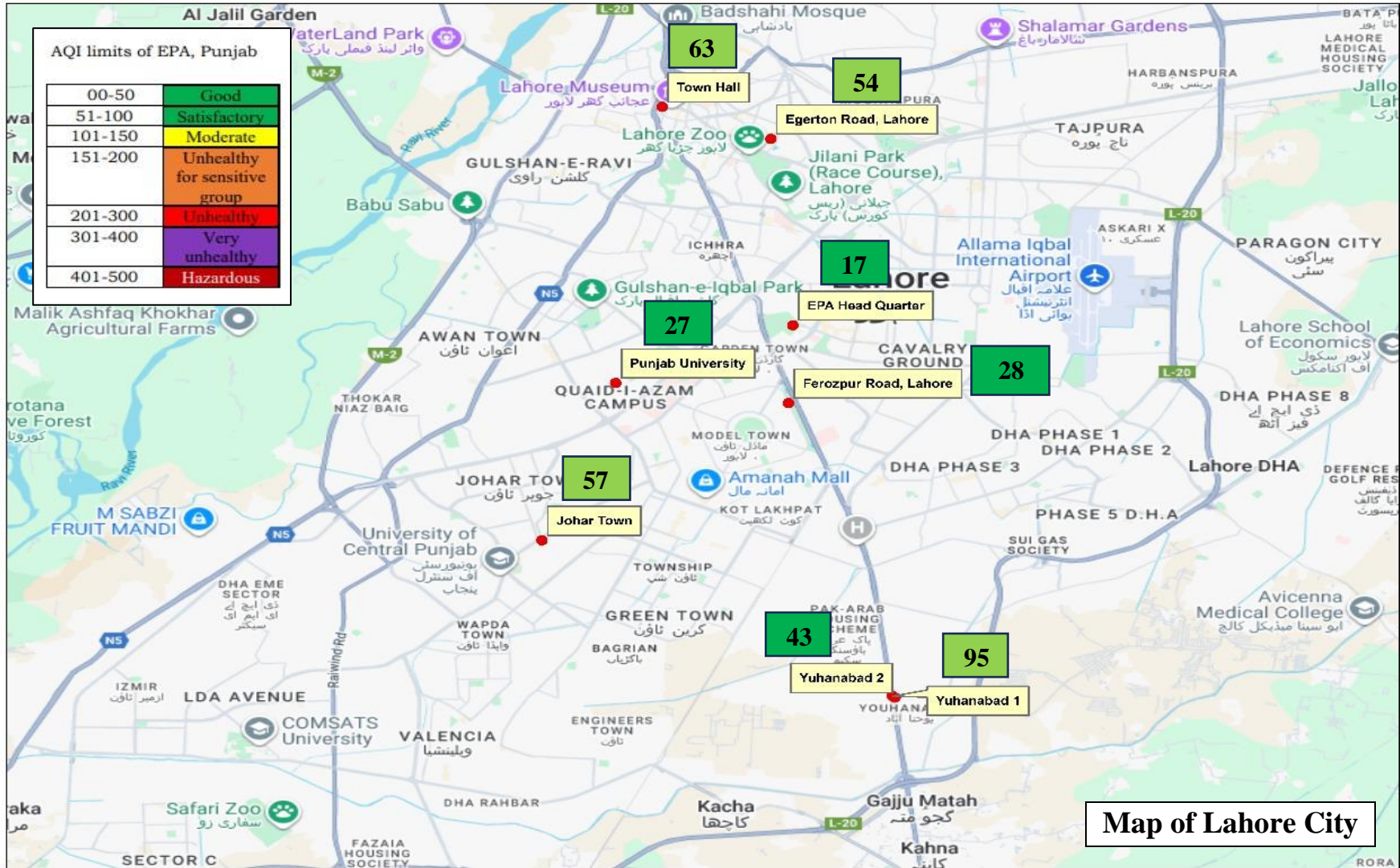


# Average AQI Lahore 48

01.09.2025 (12:00AM- 11:00PM) 24 Hours Report

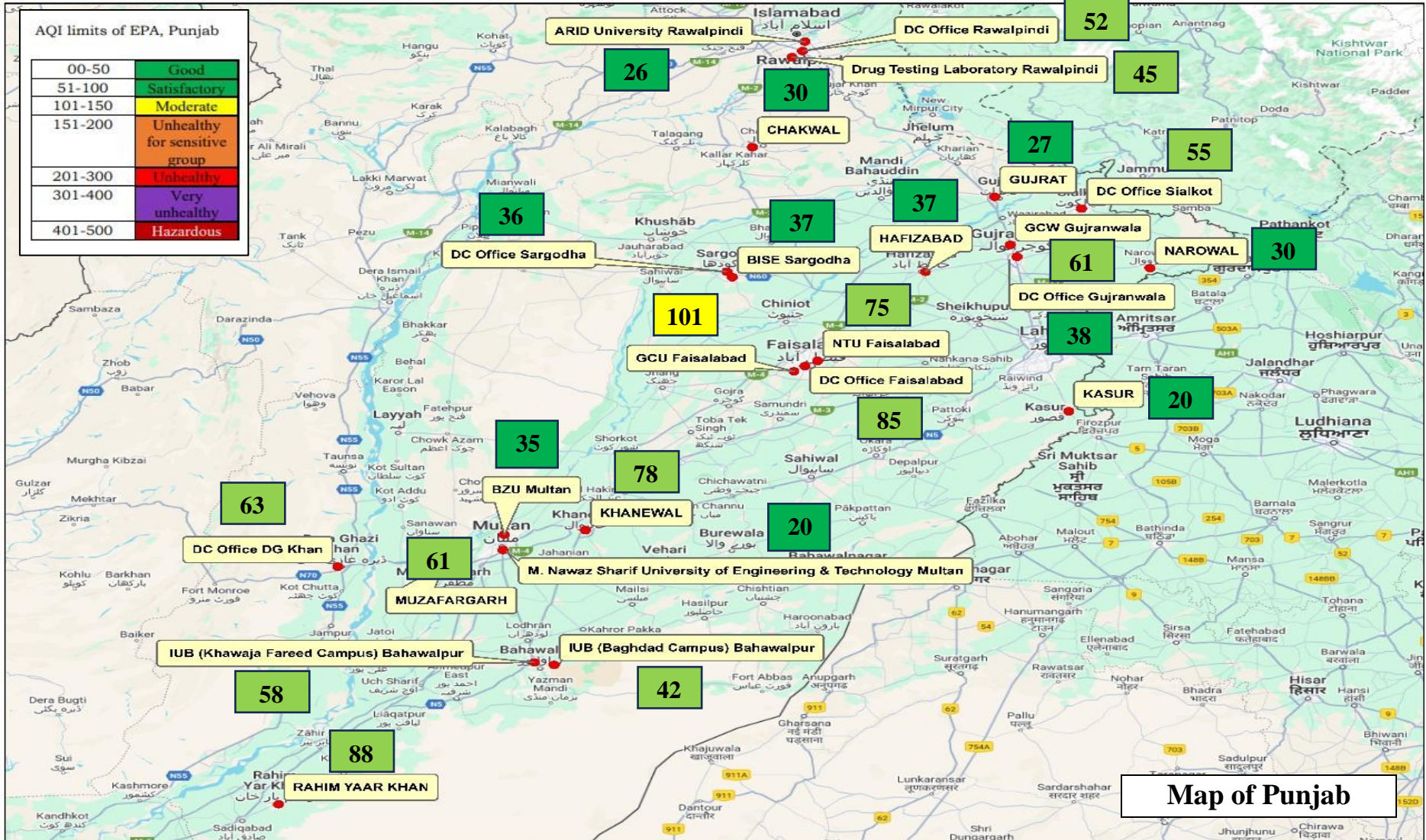


1. AQI calculations were performed using PM2.5 data (PEQs value: 35  $\mu\text{g}/\text{m}^3$ ).
2. The data was gathered from three sources: EPA(3), Vendors Enviropak (8), and SP&IU (30).
3. The **vendor-shared data might contain anomalies**, which may be rectified before the final report. For precise air quality details, refer to the official EPA website.

# AQI Report of Districts of Punjab (Lahore Excluded)



01.09.2025 (12:00AM- 11:00PM) 24 Hours Report



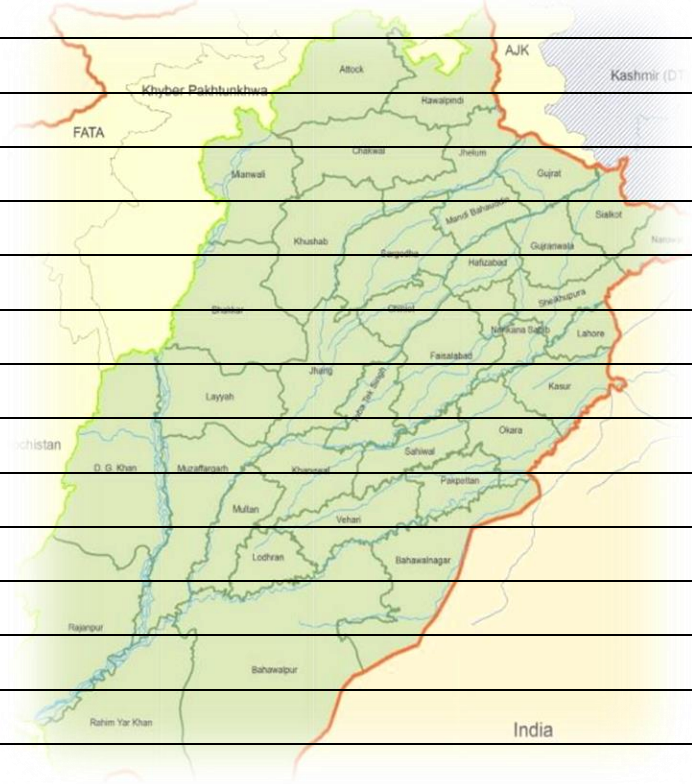
1. AQI calculations were performed using PM<sub>2.5</sub> data (PEQs value: 35 µg/m<sup>3</sup>).
2. The data was gathered from three sources: EPA(3), Vendors Enviropak (8), and SP&IU (30).
3. The vendor-shared data might contain anomalies, which may be rectified before the final report. For precise air quality details, refer to the official EPA website.

# Daily AQI Ranking of Districts in Punjab

01.09.2025 (12:00AM- 11:00PM)

AQI limits of EPA, Punjab						
00-50	51-100	101-150	151-200	201-300	301-400	401-500
Good	Satisfactory	Moderate	Unhealthy for sensitive group	Unhealthy	Very Unhealthy	Hazardous

Rank	Districts	AQI
1	Rahim Yar Khan	88
2	Faisalabad	87
3	Khanewal	78
4	DG Khan	63
5	Muzaffargarh	61
6	Sialkot	55
7	Gujranwala	50
8	Bahawalpur	50
9	Lahore	48
10	Rawalpindi	41
11	Hafizabad	37
12	Sargodha	37
13	Chakwal	30
14	Narowal	30
15	Multan	28
16	Gujrat	27
17	Kasur	20



1. AQI calculations were performed using PM2.5 data (PEQs value: 35 µg/m³).
2. The data was gathered from three sources: EPA(3), Vendors Enviropak (8), and SP&IU (30).
3. The vendor-shared data might contain anomalies, which may be rectified before the final report. For precise air quality details, refer to the official EPA websites.