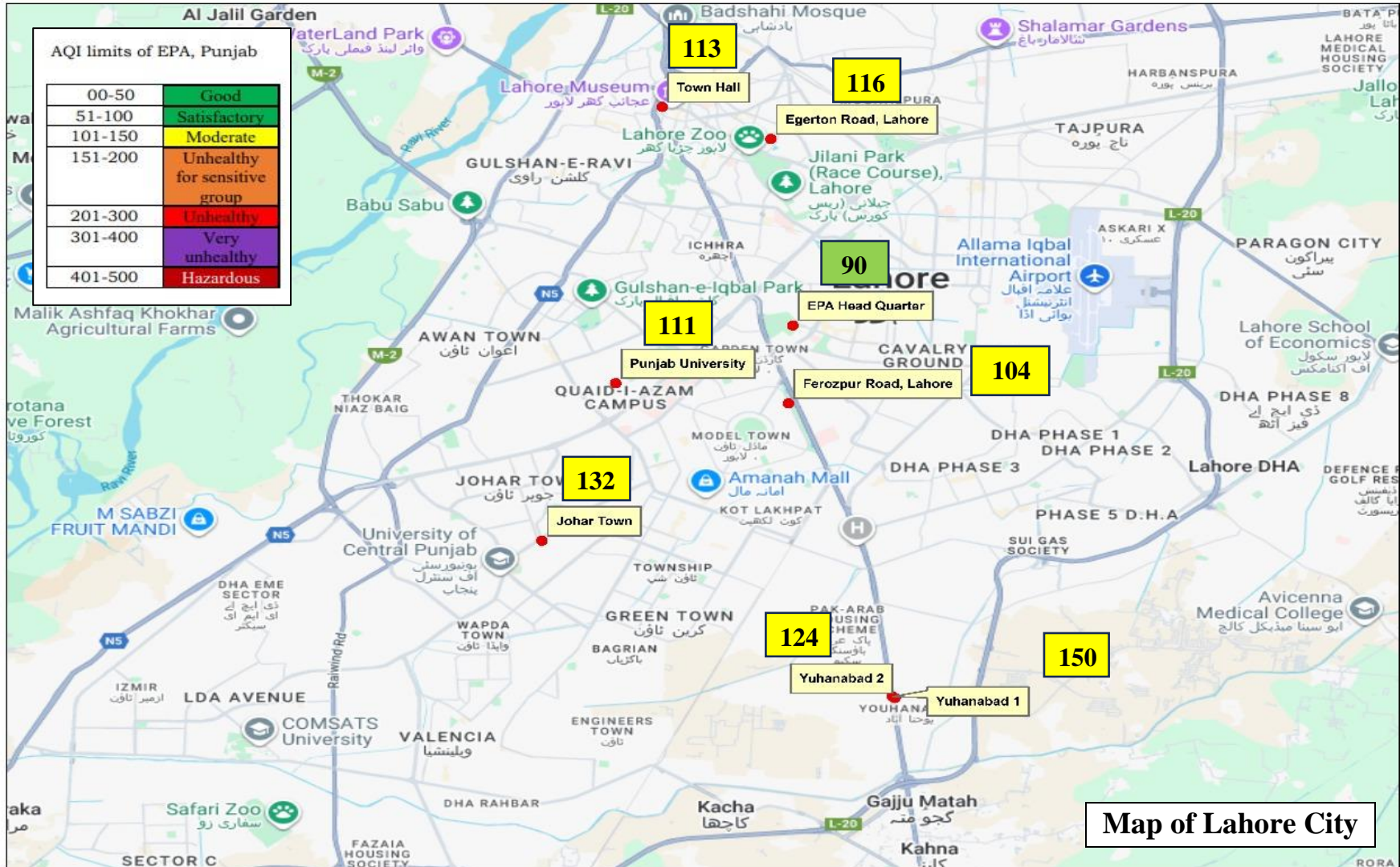


Average AQI Lahore 118

29.08.2025 (12:00AM- 11:00PM) 24 Hours Report

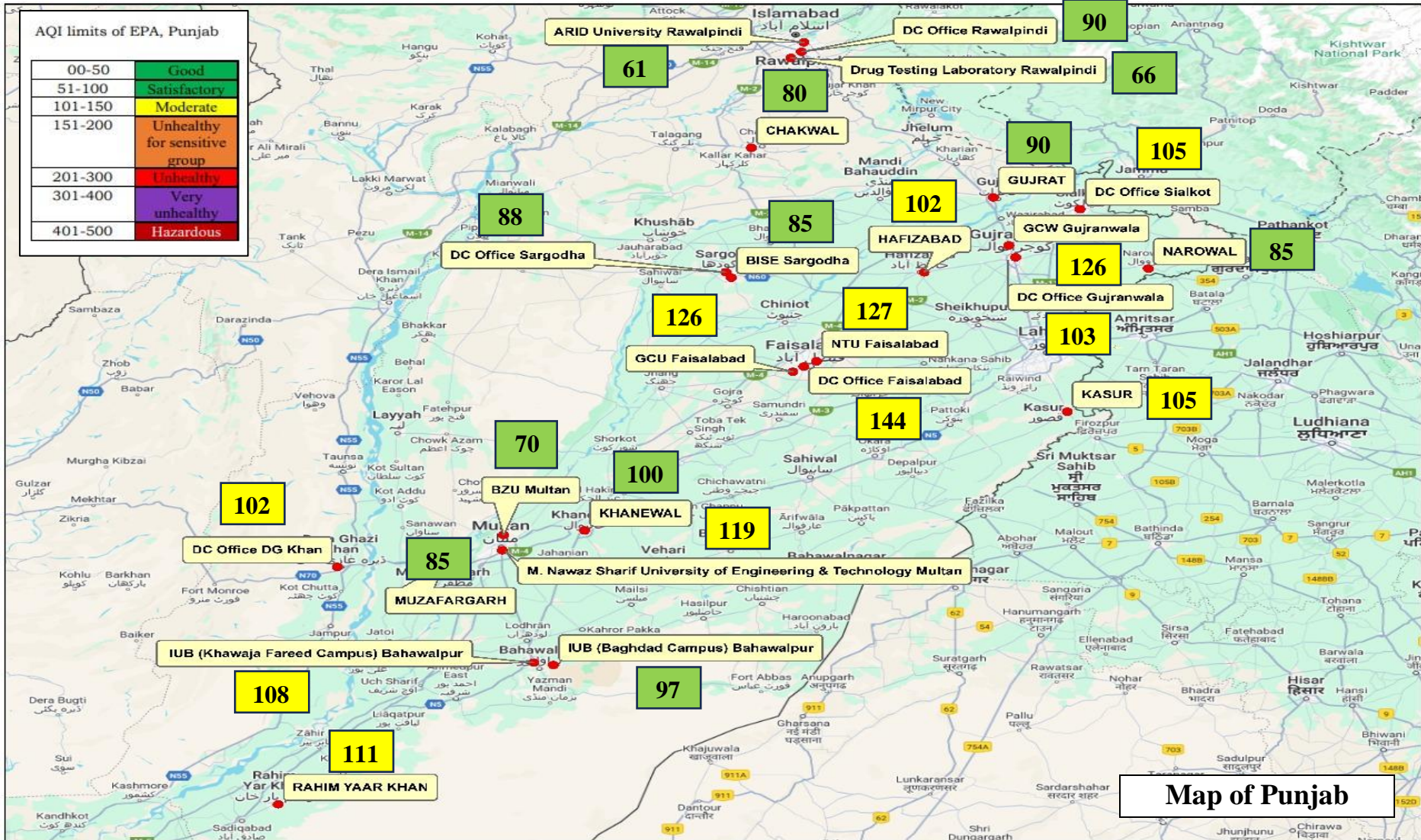


1. AQI calculations were performed using PM2.5 data (PEQs value: 35 $\mu\text{g}/\text{m}^3$).
2. The data was gathered from three sources: EPA(3), Vendors Enviropak (8), and SP&IU (30).
3. The **vendor-shared data might contain anomalies**, which may be rectified before the final report. For precise air quality details, refer to the official EPA website.

AQI Report of Districts of Punjab (Lahore Excluded)



29.08.2025 (12:00AM- 11:00PM) 24 Hours Report



1. AQI calculations were performed using PM_{2.5} data (PEQs value: 35 µg/m³).
2. The data was gathered from three sources: EPA(3), Vendors Enviropak (8), and SP&IU (30).
3. The vendor-shared data might contain anomalies, which may be rectified before the final report. For precise air quality details, refer to the official EPA website.

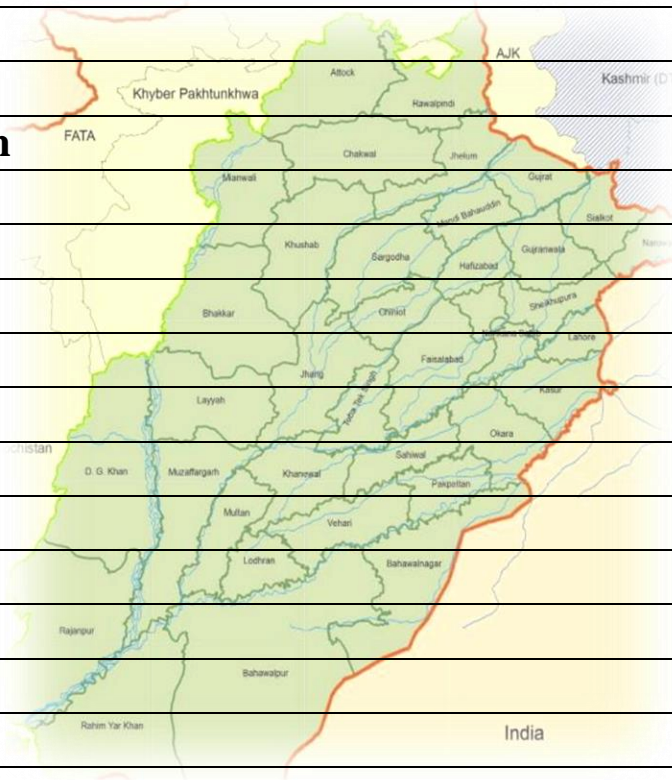
Daily AQI Ranking of Districts in Punjab

29.08.2025 (12:00AM- 11:00PM)

AQI limits of EPA, Punjab

00-50	51-100	101-150	151-200	201-300	301-400	401-500
Good	Satisfactory	Moderate	Unhealthy for sensitive group	Unhealthy	Very Unhealthy	Hazardous

Rank	Districts	AQI
1	Faisalabad	132
2	Lahore	118
3	Gujranwala	115
4	Rahim Yar Khan	111
5	Kasur	105
6	Sialkot	105
7	Bahawalpur	103
8	Hafizabad	102
9	DG Khan	102
10	Khanewal	100
11	Multan	95
12	Gujrat	90
13	Sargodha	87
14	Muzaffargarh	85
15	Narowal	85
16	Chakwal	80
17	Rawalpindi	72



1. AQI calculations were performed using PM2.5 data (PEQs value: 35 $\mu\text{g}/\text{m}^3$).
2. The data was gathered from three sources: EPA(3), Vendors Enviropak (8), and SP&IU (30).
3. The **vendor-shared data might contain anomalies**, which may be rectified before the final report. For precise air quality details, refer to the official EPA websites.