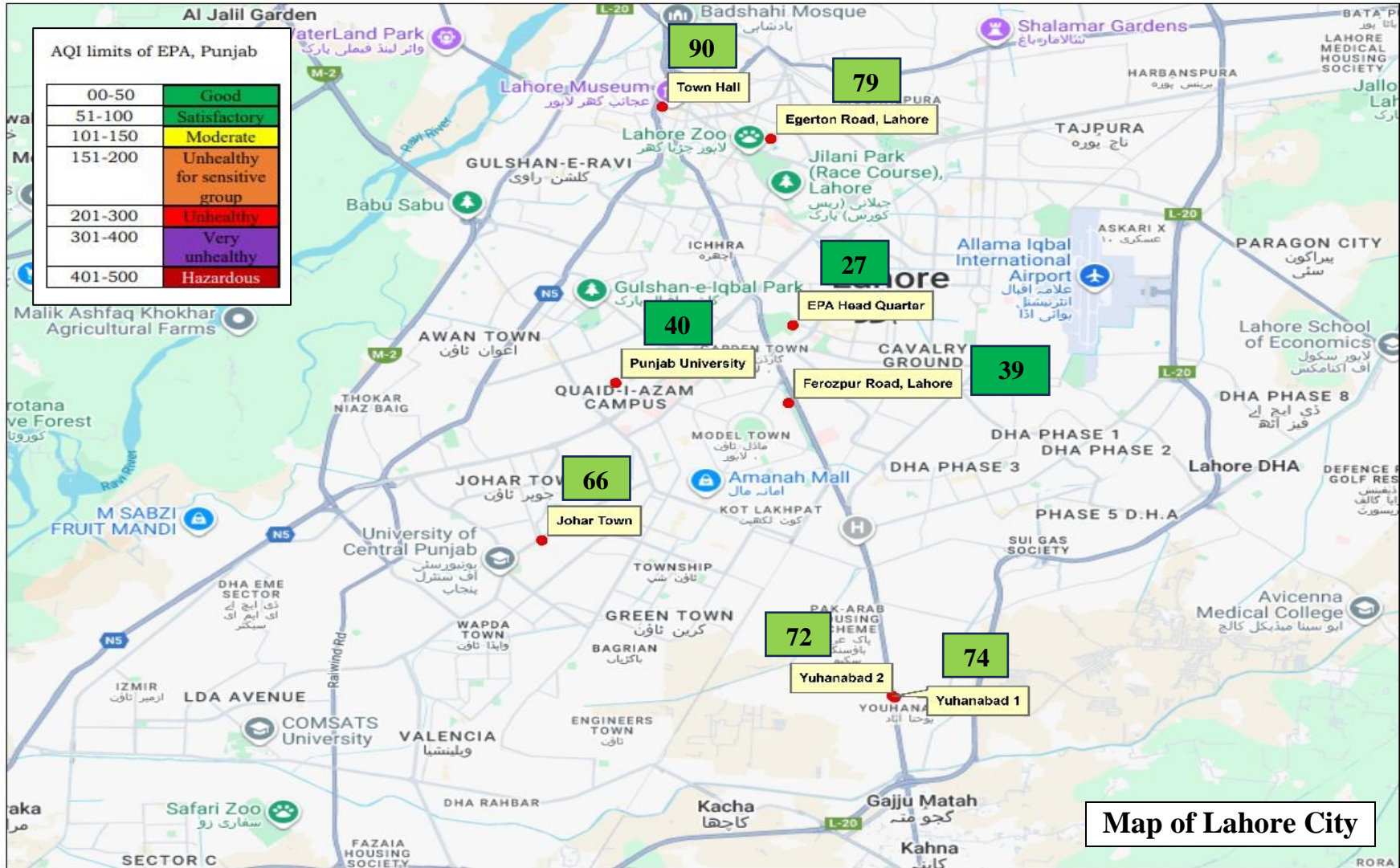


Average AQI Lahore 61

31.08.2025 (12:00AM- 11:00PM) 24 Hours Report

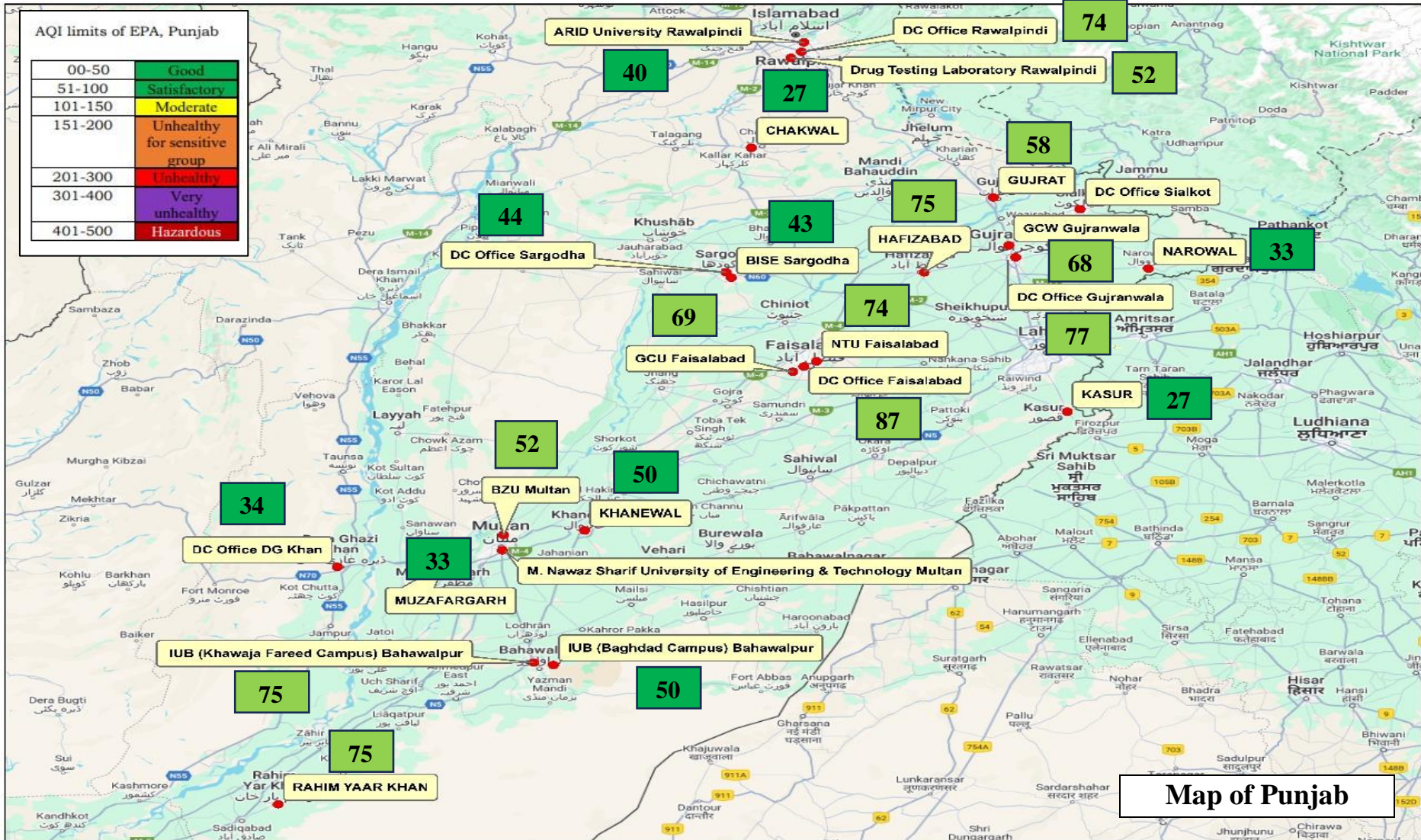


1. AQI calculations were performed using PM2.5 data (PEQs value: 35 $\mu\text{g}/\text{m}^3$).
2. The data was gathered from three sources: EPA(3), Vendors Enviropak (8), and SP&IU (30).
3. The **vendor-shared data might contain anomalies**, which may be rectified before the final report. For precise air quality details, refer to the official EPA website.

AQI Report of Districts of Punjab (Lahore Excluded)



31.08.2025 (12:00AM- 11:00PM) 24 Hours Report



1. AQI calculations were performed using PM_{2.5} data (PEQs value: 35 µg/m³).
2. The data was gathered from three sources: EPA(3), Vendors Enviropak (8), and SP&IU (30).
3. The vendor-shared data might contain anomalies, which may be rectified before the final report. For precise air quality details, refer to the official EPA website.

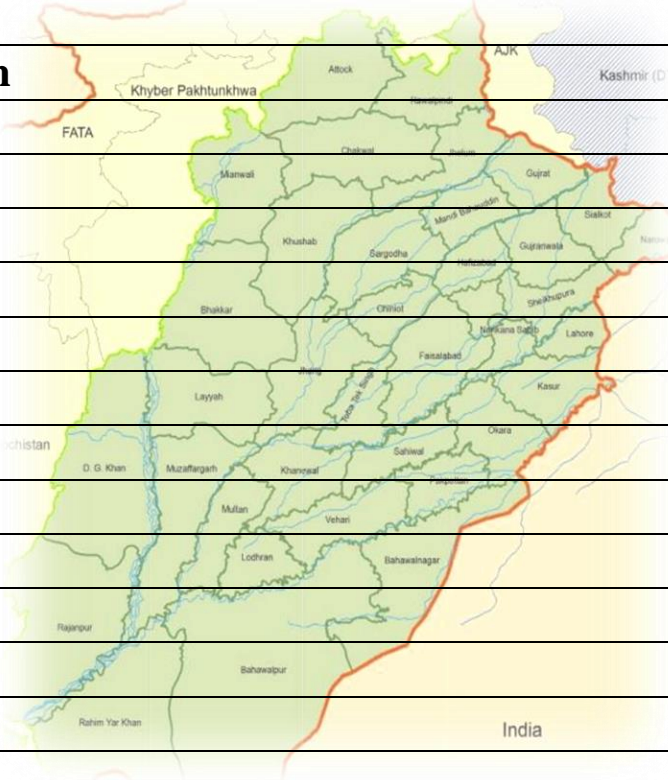
Daily AQI Ranking of Districts in Punjab

31.08.2025 (12:00AM- 11:00PM)

AQI limits of EPA, Punjab

00-50	51-100	101-150	151-200	201-300	301-400	401-500
Good	Satisfactory	Moderate	Unhealthy for sensitive group	Unhealthy	Very Unhealthy	Hazardous

Rank	Districts	AQI
1	Faisalabad	77
2	Hafizabad	75
3	Rahim Yar Khan	75
4	Gujranwala	73
5	Bahawalpur	63
6	Lahore	61
7	Gujrat	58
8	Rawalpindi	55
9	Multan	52
10	Khanewal	50
11	Sargodha	44
12	DG Khan	34
13	Muzaffargarh	33
14	Narowal	33
15	Chakwal	27
16	Kasur	27
17	Sialkot	



1. AQI calculations were performed using PM2.5 data (PEQs value: 35 $\mu\text{g}/\text{m}^3$).
2. The data was gathered from three sources: EPA(3), Vendors Enviropak (8), and SP&IU (30).
3. The vendor-shared data might contain anomalies, which may be rectified before the final report. For precise air quality details, refer to the official EPA websites.